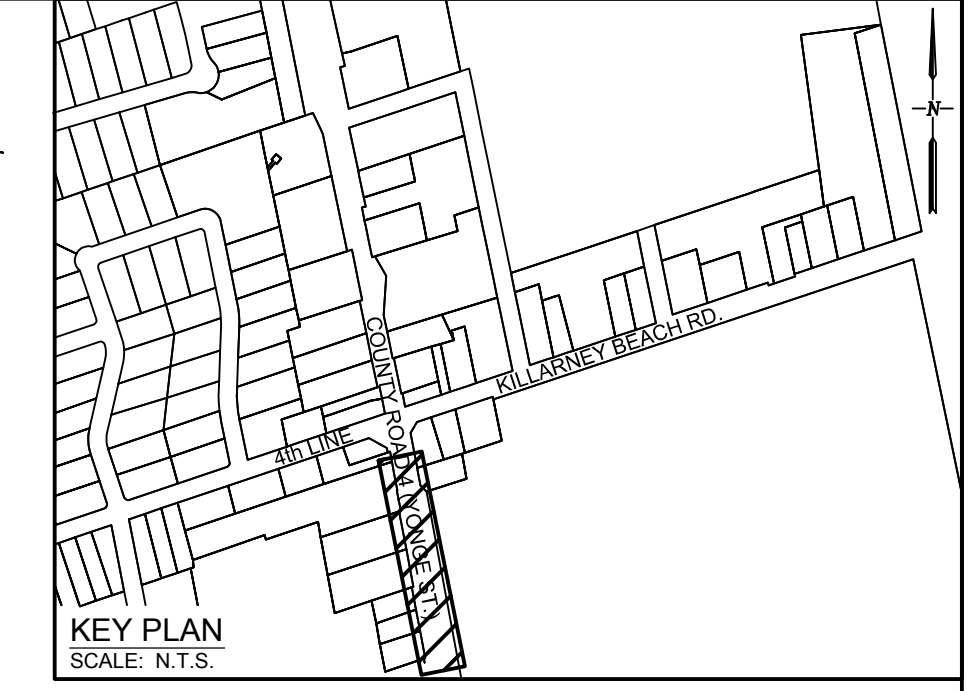
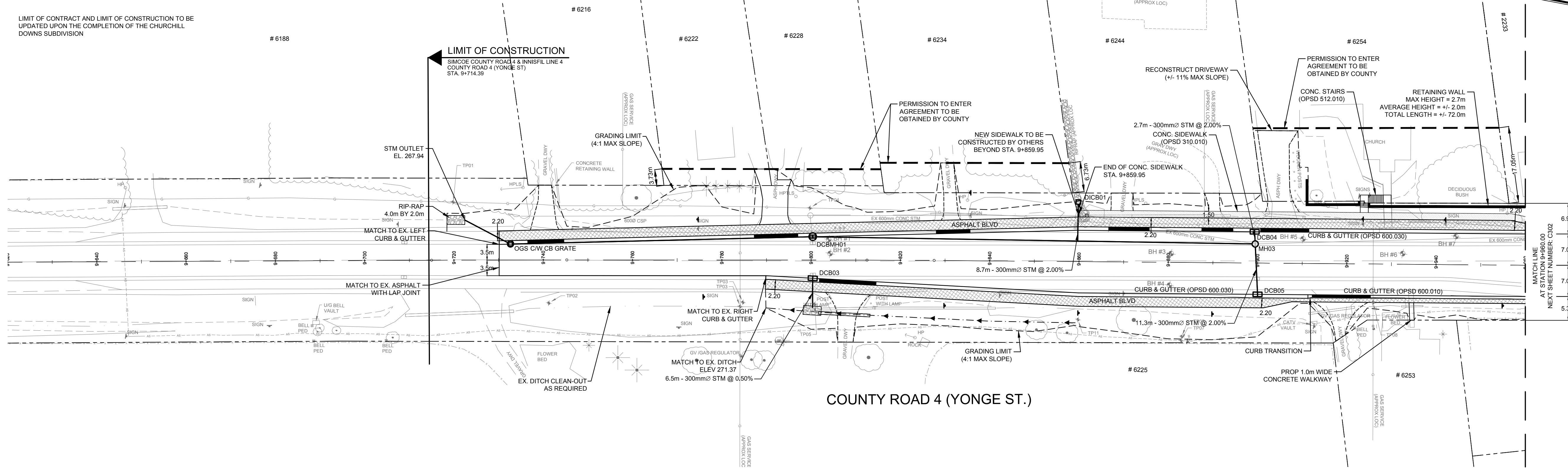
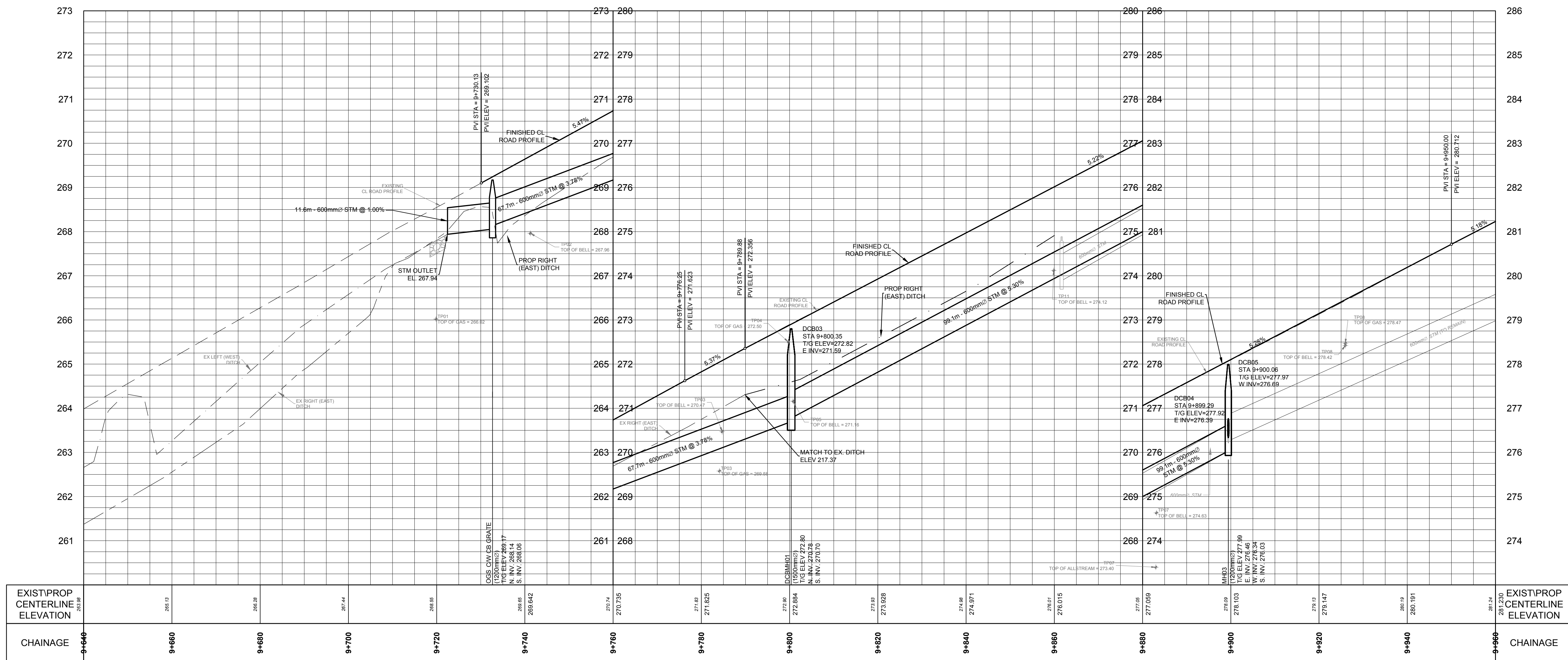


LIMIT OF CONTRACT AND LIMIT OF CONSTRUCTION TO BE UPDATED UPON THE COMPLETION OF THE CHURCHILL DOWNS SUBDIVISION



COUNTY ROAD 4 (YONGE ST.)



Notes  
 1. This drawing is the exclusive property of R. J. Burnside & Associates Limited. The reproduction of any part without prior written consent of this office is strictly prohibited.  
 2. The contractor shall verify all dimensions, levels, and datum on site and report any discrepancies or omissions to this office prior to construction.  
 3. This drawing is to be read and understood in conjunction with all other plans and documents applicable to this project.

**NOT FOR CONSTRUCTION**

No.	Issue / Revision	Date	Auth.
0	ISSUE FOR 60% SUBMISSION	16/09/21	
1	ISSUE FOR 90% SUBMISSION	19/06/05	

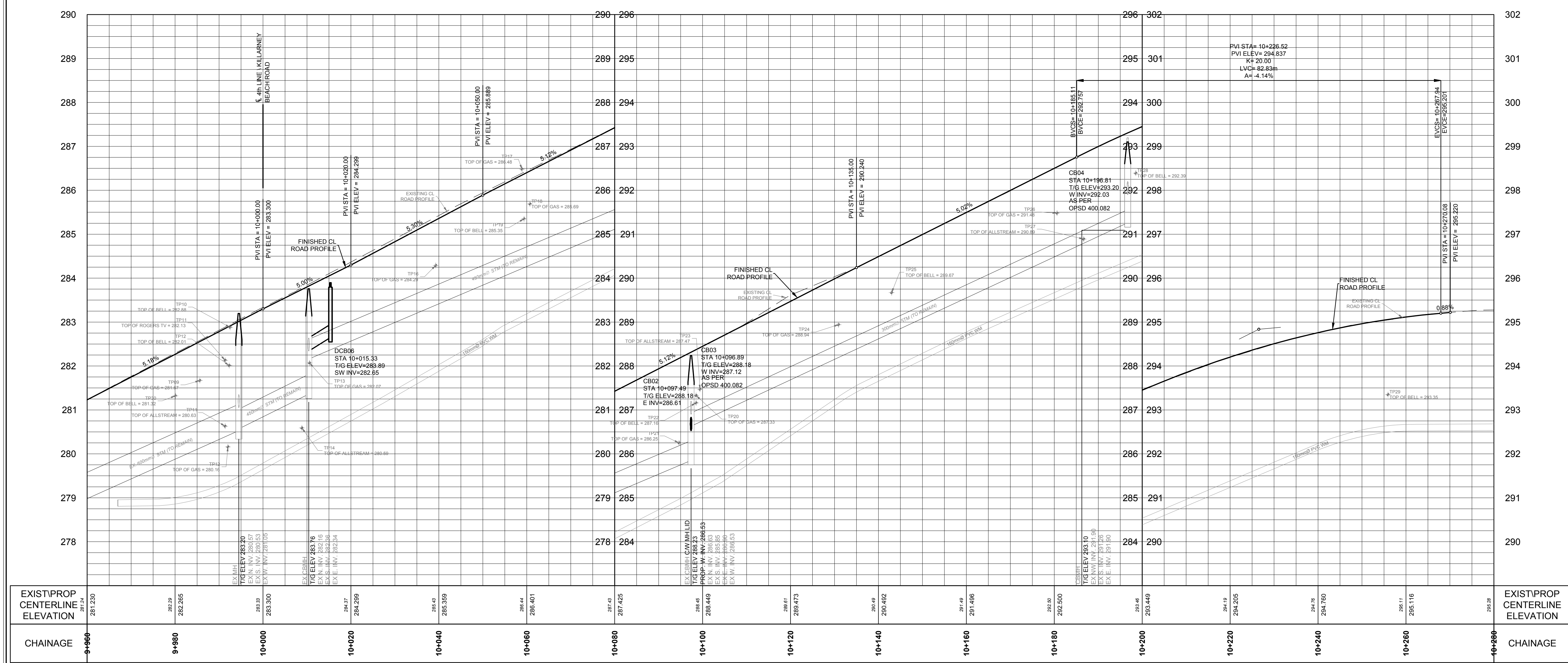
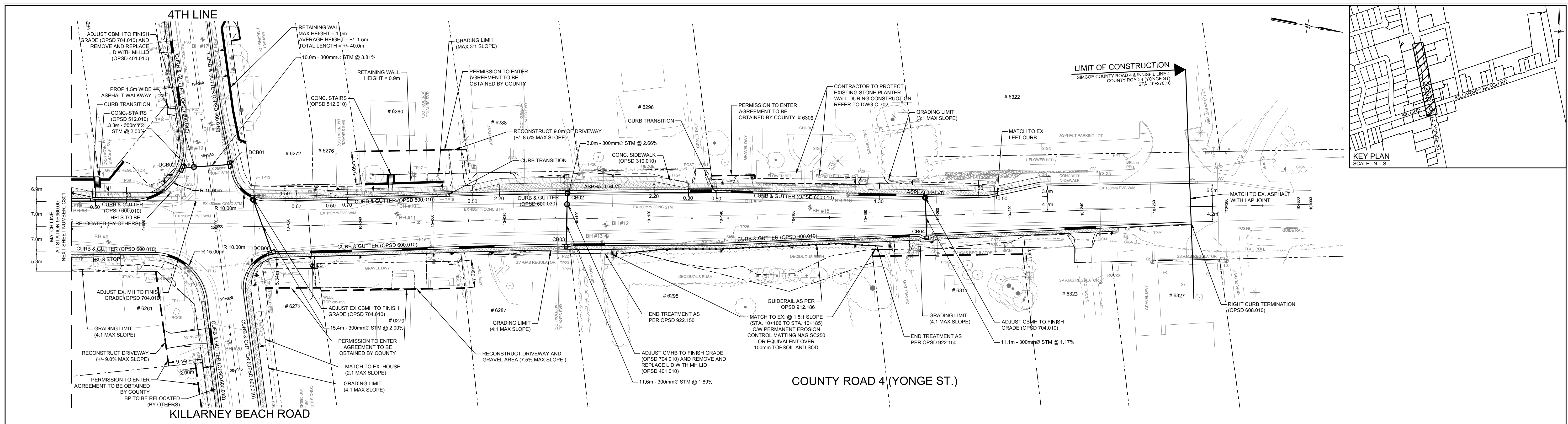
**BURNSIDE**  
 R. J. Burnside & Associates Limited  
 128 Wellington St. W., Suite 301  
 Barrie, Ontario, L4N 8J6  
 Telephone: (705) 797-2047  
 Fax: (705) 797-2037  
 web: www.rjburnside.com

Client  
**COUNTY OF SIMCOE**  
 1110 HIGHWAY NO. 26  
 MIDHURST, ON  
 L9X 1N6

Drawing Title  
**SIMCOE COUNTY ROAD 4 AND INNISFIL 4TH LINE INTERSECTION IMPROVEMENTS**  
 PLAN & PROFILE  
 COUNTY ROAD 4 (YONGE ST)  
 STA. 9+720 TO STA. 9+960

Drawn	Checked	Designed	Checked	Date	Drawing No.
M.L.	D.D.	A.A.	D.D.		
300303647				16/05/03	
Project No.	Contract No.	Revision No.			
300303647	2022R4-645-01	1			

Scale: H 1:500 V 1:50  
  
**C-301**



Notes  
 1. This drawing is the exclusive property of R. J. Burnside & Associates Limited. The reproduction of any part without prior written consent of this office is strictly prohibited.  
 2. The contractor shall verify all dimensions, levels, and datums on site and report any discrepancies or omissions to this office prior to construction.  
 3. This drawing is to be read and understood in conjunction with all other plans and documents applicable to this project.

**NOT FOR CONSTRUCTION**

No.	Issue / Revision	Date	Auth.
0	ISSUE FOR 60% SUBMISSION	16/09/21	
1	ISSUE FOR 90% SUBMISSION	19/06/05	

**BURNSIDE**  
 R. J. Burnside & Associates Limited  
 128 Wellington St. W., Suite 301  
 Barrie, Ontario, L4N 8J6  
 Telephone: (705) 797-2047  
 Fax: (705) 797-2037  
 web: www.rjburnside.com

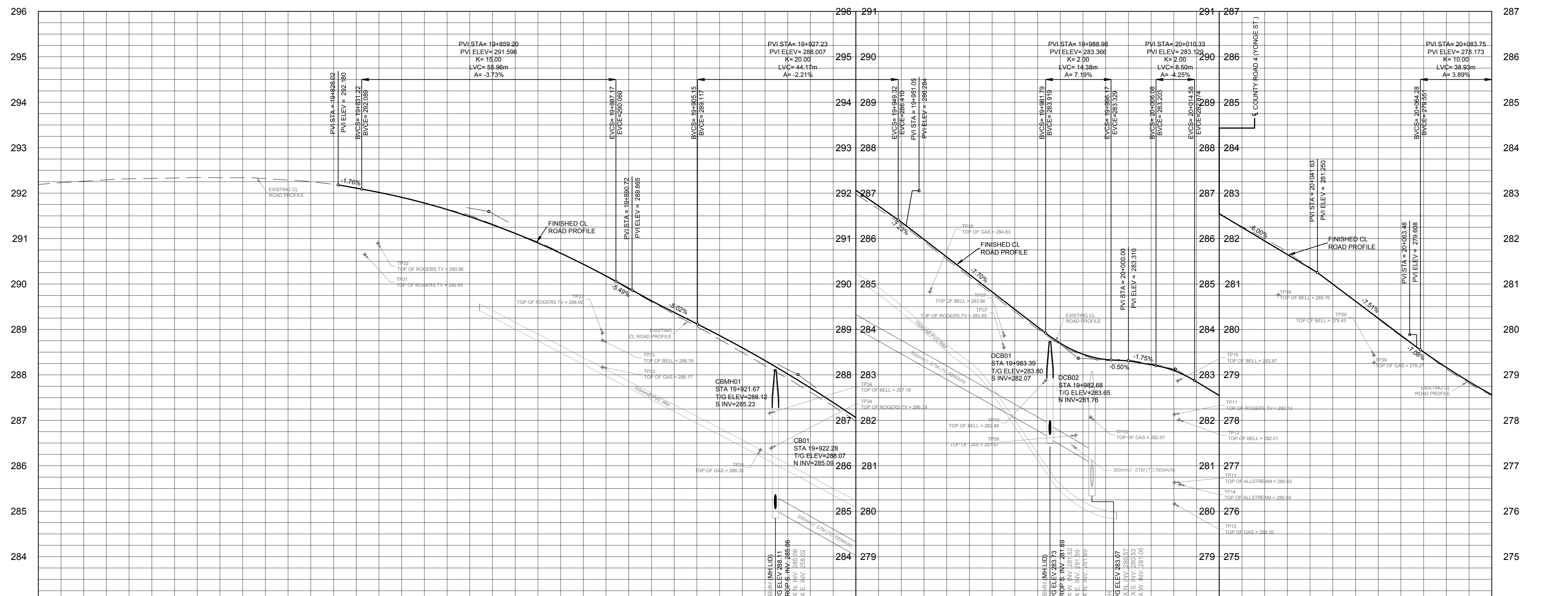
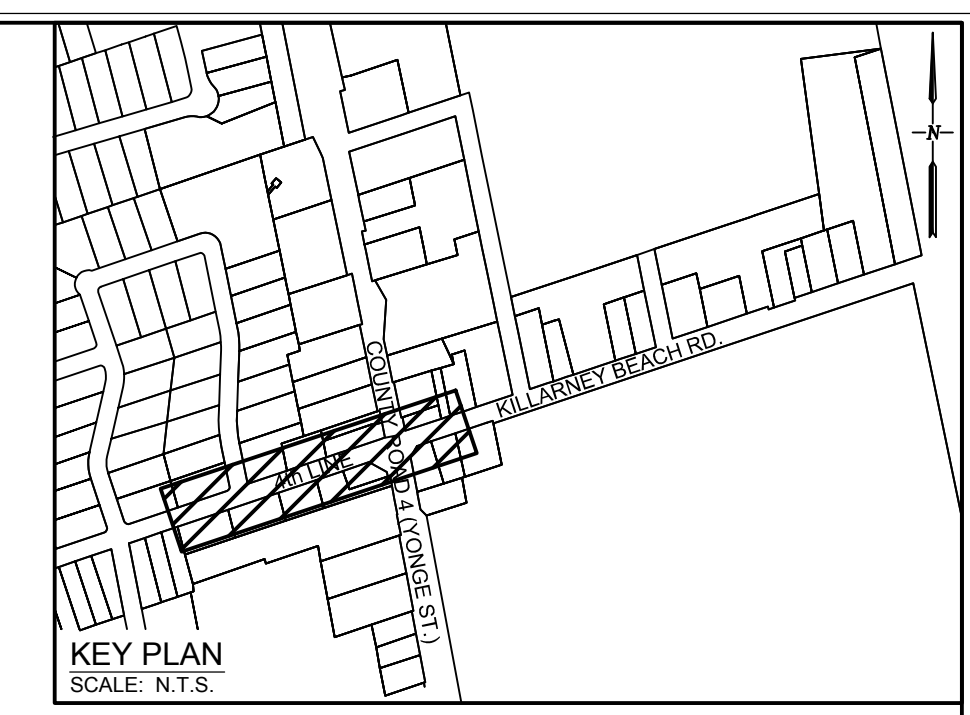
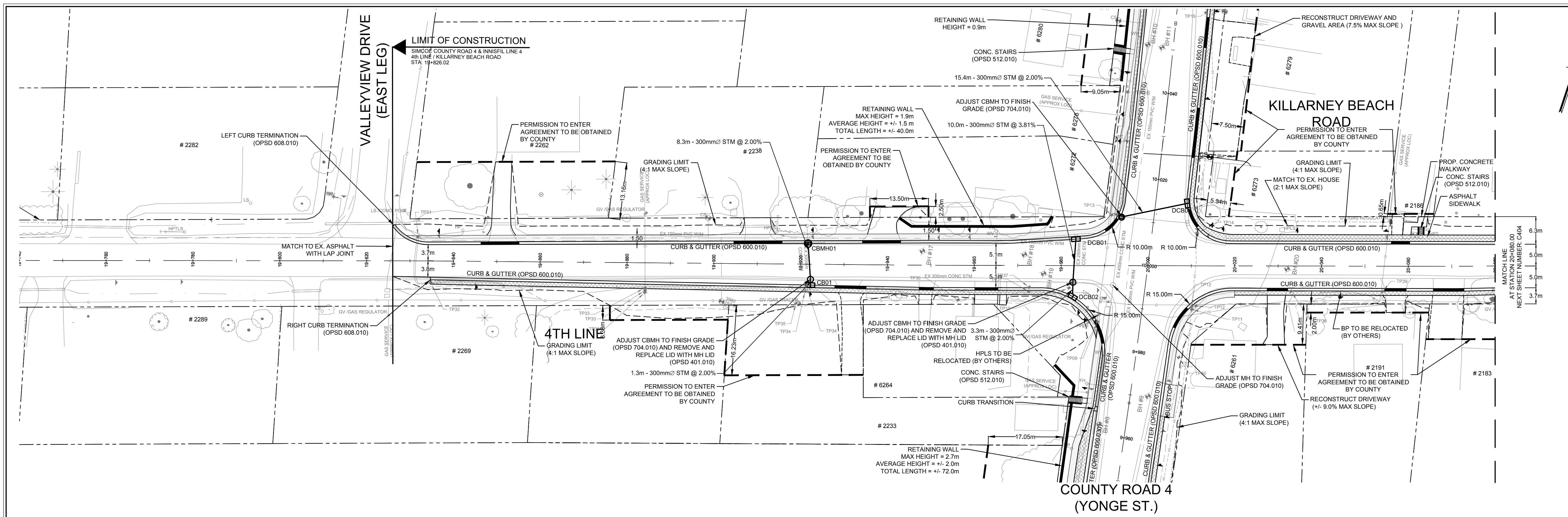
Client  
**COUNTY OF SIMCOE**  
 1110 HIGHWAY NO. 26  
 MIDHURST, ON  
 L9X 1N6

Drawn By  
**SIMCOE COUNTY ROAD 4 AND INNISFIL 4TH LINE INTERSECTION IMPROVEMENTS**  
 PLAN & PROFILE  
 COUNTY ROAD 4 (YONGE ST)  
 STA. 9+960 TO STA. 10+280

Drawn	Checked	Designed	Checked	Date	Drawing No.
M.L.	D.D.	A.A.	D.D.		
				16/05/03	
Project No. 300033647	Contract No. 2022R4-645-01	Revision No. 1			

Scale  
 H 1:500 V 1:50  
  
**C-302**





CHAINAGE	EXIST/PROP CENTERLINE ELEVATION
19+760	287.19
19+780	287.22
19+800	287.24
19+820	287.25
19+840	287.26
19+860	287.27
19+880	287.28
19+900	287.29
19+920	287.30
19+940	287.31
19+960	287.32
19+980	287.33
20+000	287.34
20+020	287.35
20+040	287.36
20+060	287.37
20+080	287.38
20+100	287.39
20+120	287.40
20+140	287.41
20+160	287.42
20+180	287.43
20+200	287.44
20+220	287.45
20+240	287.46
20+260	287.47
20+280	287.48
20+300	287.49
20+320	287.50
20+340	287.51
20+360	287.52
20+380	287.53
20+400	287.54
20+420	287.55
20+440	287.56
20+460	287.57
20+480	287.58
20+500	287.59
20+520	287.60
20+540	287.61
20+560	287.62
20+580	287.63
20+600	287.64
20+620	287.65
20+640	287.66
20+660	287.67
20+680	287.68
20+700	287.69
20+720	287.70
20+740	287.71
20+760	287.72
20+780	287.73
20+800	287.74
20+820	287.75
20+840	287.76
20+860	287.77
20+880	287.78
20+900	287.79
20+920	287.80
20+940	287.81
20+960	287.82
20+980	287.83
20+1000	287.84

Notes

- This drawing is the exclusive property of R. J. Burnside & Associates Limited. The reproduction of any part without prior written consent of this office is strictly prohibited.
- The contractor shall verify all dimensions, levels, and datums on site and report any discrepancies or omissions to this office prior to construction.
- This drawing is to be read and understood in conjunction with all other plans and documents applicable to this project.

**NOT FOR CONSTRUCTION**

No.	Issue / Revision	Date	Auth.
0	ISSUE FOR 60% SUBMISSION	16/09/21	
1	ISSUE FOR 90% SUBMISSION	19/06/05	

**BURNSIDE**

R. J. Burnside & Associates Limited  
128 Wellington St. W., Suite 301  
Barrie, Ontario, L4N 8J6  
Telephone (705) 797-2047  
Fax (705) 797-2037  
web www.rjburnside.com

Client  
**COUNTY OF SIMCOE**  
1110 HIGHWAY NO. 26  
MIDHURST, ON  
L9X 1N6

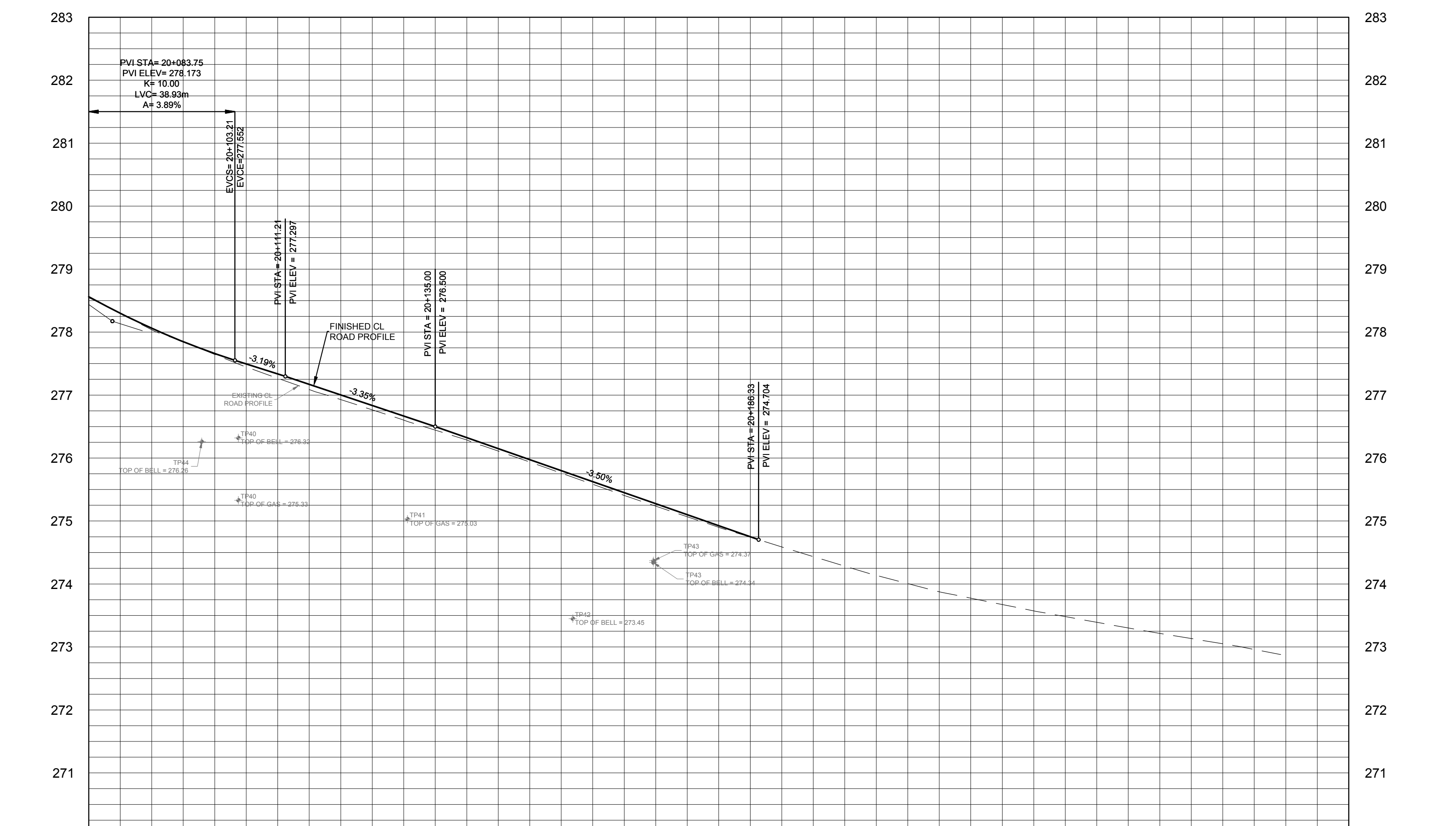
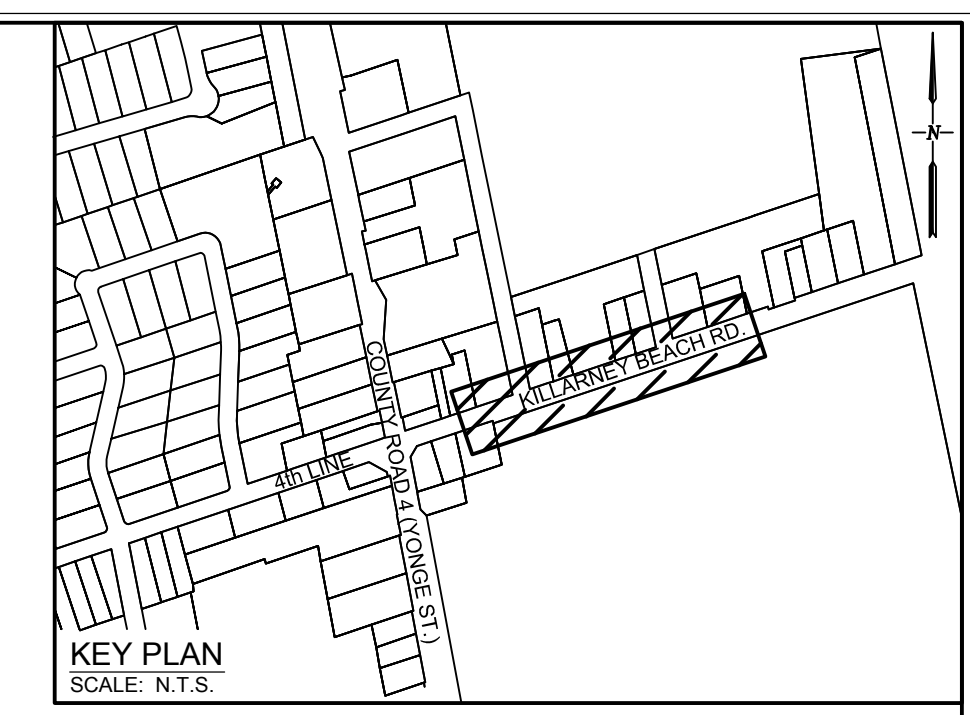
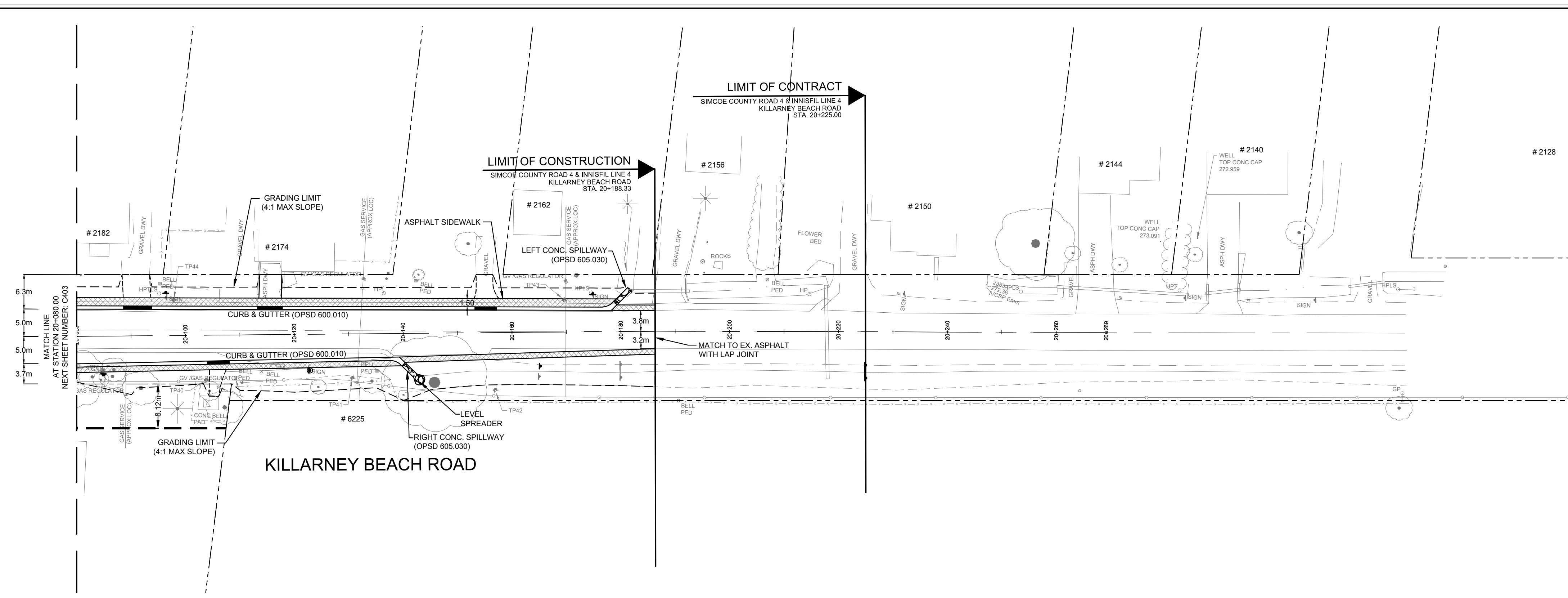
Drawing Title  
**SIMCOE COUNTY ROAD 4 AND INNISFIL 4TH LINE INTERSECTION IMPROVEMENTS**  
PLAN & PROFILE  
4th LINE / KILLARNEY BEACH ROAD  
STA. 19+820 TO STA. 20+080

Drawn	Checked	Designed	Checked	Date	Drawing No.
M.L.	D.D.	A.A.	D.D.		
				16/05/03	

Project No. 300033647  
Contract No. 2022R4-645-01  
Revision No. 1

Scale: H 1:500 V 1:50

**C-303**



EXIST/PROP CENTERLINE ELEVATION	275.662	277.66	277.660	278.69	277.002	276.39	276.325	275.98	276.625	274.96	274.925	274.28	273.77	273.38	273.05	EXIST/PROP CENTERLINE ELEVATION
CHAINAGE	20+000	20+100	20+120	20+140	20+160	20+180	20+200	20+220	20+240	20+260	20+280	CHAINAGE				

Notes  
 1. This drawing is the exclusive property of R. J. Burnside & Associates Limited. The reproduction of any part without prior written consent of this office is strictly prohibited.  
 2. The contractor shall verify all dimensions, levels, and datums on site and report any discrepancies or omissions to this office prior to construction.  
 3. This drawing is to be read and understood in conjunction with all other plans and documents applicable to this project.

**NOT FOR CONSTRUCTION**

No.	Issue / Revision	Date	Auth.
0	ISSUE FOR 60% SUBMISSION	16/09/21	
1	ISSUE FOR 90% SUBMISSION	19/06/05	



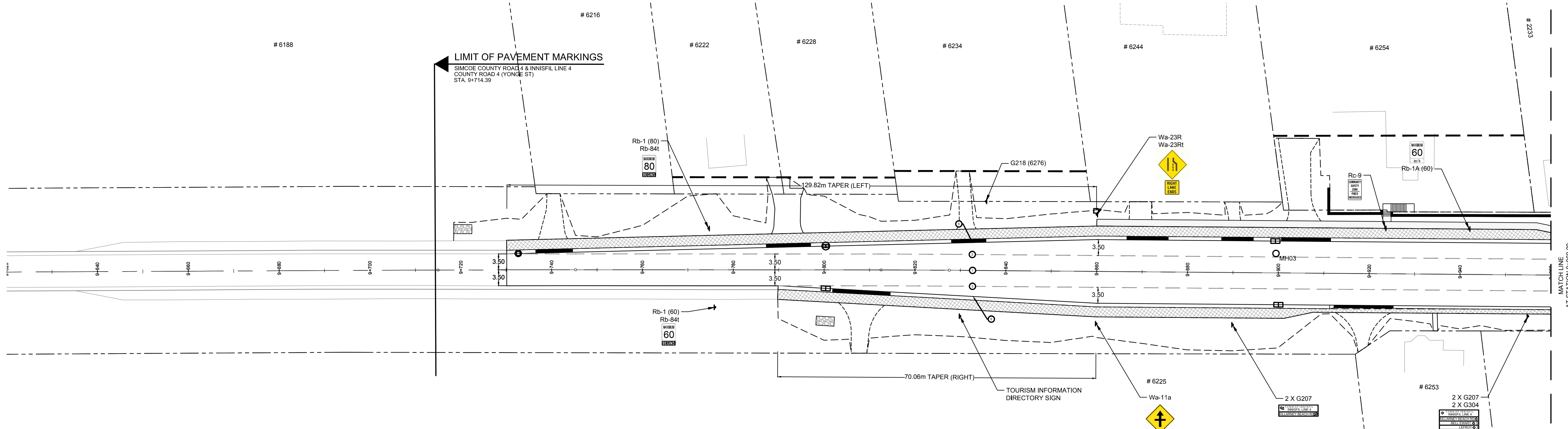
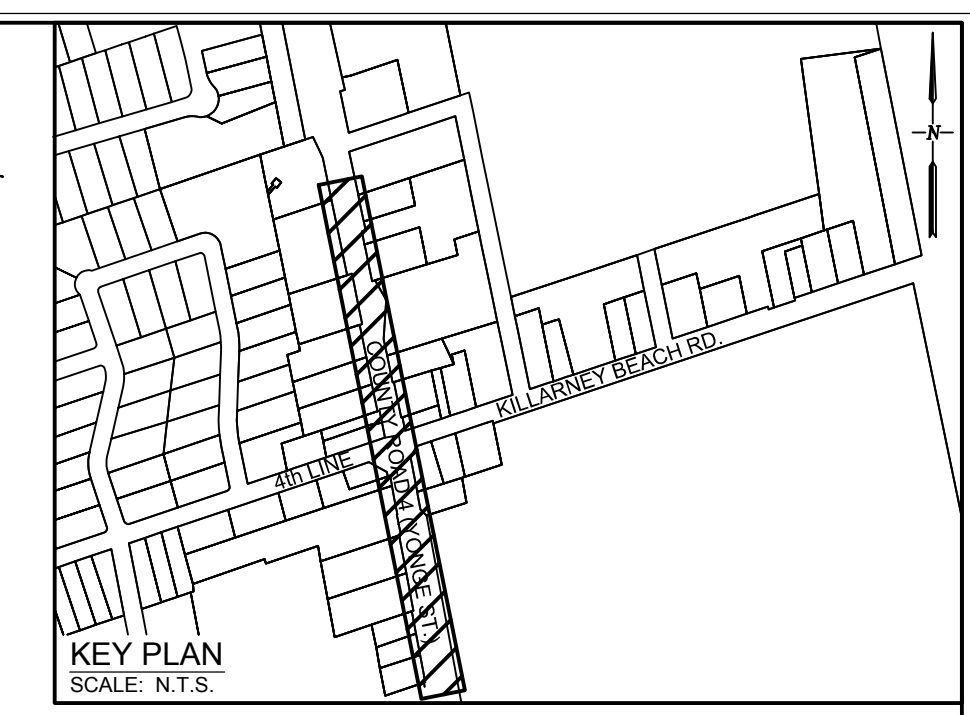
Client  
**COUNTY OF SIMCOE**  
 1110 HIGHWAY NO. 26  
 MIDHURST, ON  
 L9X 1N6

Drawn by  
**SIMCOE COUNTY ROAD 4 AND INNISFIL 4TH LINE INTERSECTION IMPROVEMENTS**  
 PLAN & PROFILE  
 KILLARNEY BEACH ROAD  
 STA. 20+080 TO STA. 20+225

Drawn	Checked	Designed	Checked	Date	Drawing No.
M.L.	D.D.	A.A.	D.D.	16/05/03	
Project No.	Contract No.	Revision No.			
300033647	2022R4-645-01	1			
Scale					
H 1:500 V 1:50					

**C-304**

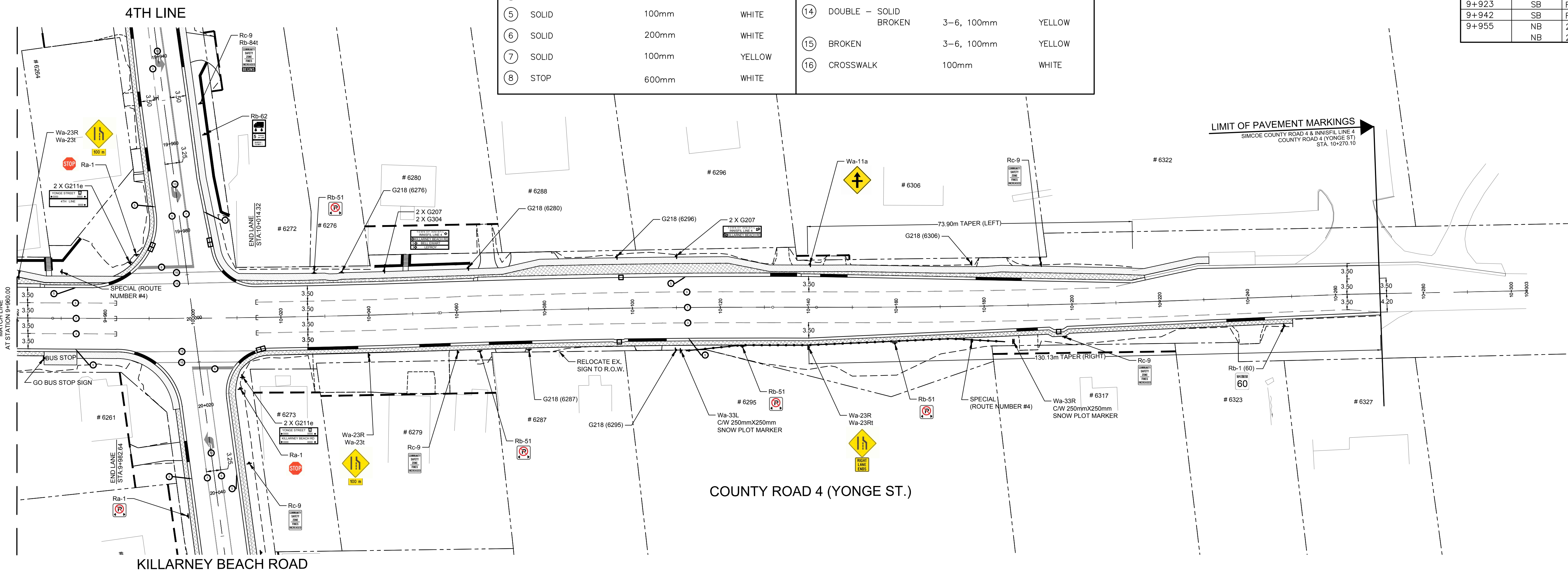




COUNTY ROAD 4 (YONGE ST.)

PAVEMENT MARKINGS LEGEND					
NAME OF LINE	DIMENSION	COLOR	NAME OF LINE	DIMENSION	COLOR
① DOUBLE SOLID	2x100mm	YELLOW	⑨ SYMBOL (TH. ARROW)	3.45 x 0.75	WHITE
②a BROKEN	3-3, 100mm	WHITE	⑩ SYMBOL (LT. ARROW)	3.0 x 1.35	WHITE
②b BROKEN	3-3, 200mm	WHITE	⑪ SYMBOL (RT. ARROW)	4.95 x 1.65	WHITE
③ BROKEN	3-6, 100mm	WHITE	⑫ SYMBOL (TH.+RT. ARROW)	4.95 x 1.65	WHITE
④ BROKEN	3-9, 100mm	WHITE	⑬ SYMBOL (TH.+LT. ARROW)	100mm	YELLOW
⑤ SOLID	100mm	WHITE	⑭ DOUBLE - SOLID BROKEN	3-6, 100mm	YELLOW
⑥ SOLID	200mm	WHITE	⑮ BROKEN	3-6, 100mm	YELLOW
⑦ SOLID	100mm	YELLOW	⑯ CROSSWALK	100mm	WHITE
⑧ STOP	600mm	WHITE			

SIGNAGE			
STATION	DIRECTION	TYPE	NEW/RELOCATE
9+960	SB	Wa-23R	NEW
9+966	NB	GO BUS	RELOCATE
9+970	SB	SPECIAL	NEW
10+028	SB	Rb-51	NEW
10+034	SB	G218	RELOCATE
10+040	NB	Wa-23R	NEW
10+044	SB	2 X G207	NEW
9+775	SB	Rb-1(80)	NEW
9+776	NB	Rb-1(60)	NEW
9+836	SB	G218	RELOCATE
9+830	NB	INFO	NEW
9+860	SB	Wa-23R	NEW
9+860	NB	Wa-11a	NEW
9+890	NB	2 X G207	NEW
9+923	SB	Rc-9	NEW
9+942	SB	Rb-1A(60)	NEW
9+955	NB	2 X G207	NEW
10+160	NB	Rb-51	NEW
10+177	SB	G218	RELOCATE
10+177	NB	SPECIAL	NEW
10+187	NB	Wa-33R	NEW
10+187	NB	MARKER	NEW
10+193	SB	Rc-9	NEW
10+198	NB	Rc-9	NEW
10+248	NB	Rb-1	NEW



COUNTY ROAD 4 (YONGE ST.)

Notes  
 1. This drawing is the exclusive property of R. J. Burnside & Associates Limited. The reproduction of any part without prior written consent of this office is strictly prohibited.  
 2. The contractor shall verify all dimensions, levels, and datums on site and report any discrepancies or omissions to this office prior to construction.  
 3. This drawing is to be read and understood in conjunction with all other plans and documents applicable to this project.

**NOT FOR CONSTRUCTION**

No.	Issue / Revision	Date	Auth.
0	ISSUE FOR 60% SUBMISSION	16/06/21	
1	ISSUE FOR 90% SUBMISSION	19/06/05	

**BURNSIDE**  
 R. J. Burnside & Associates Limited  
 128 Wellington St. W., Suite 301  
 Barrie, Ontario, L4N 8J6  
 Telephone (705) 797-2047  
 Fax (705) 797-2037  
 web www.rjburnside.com

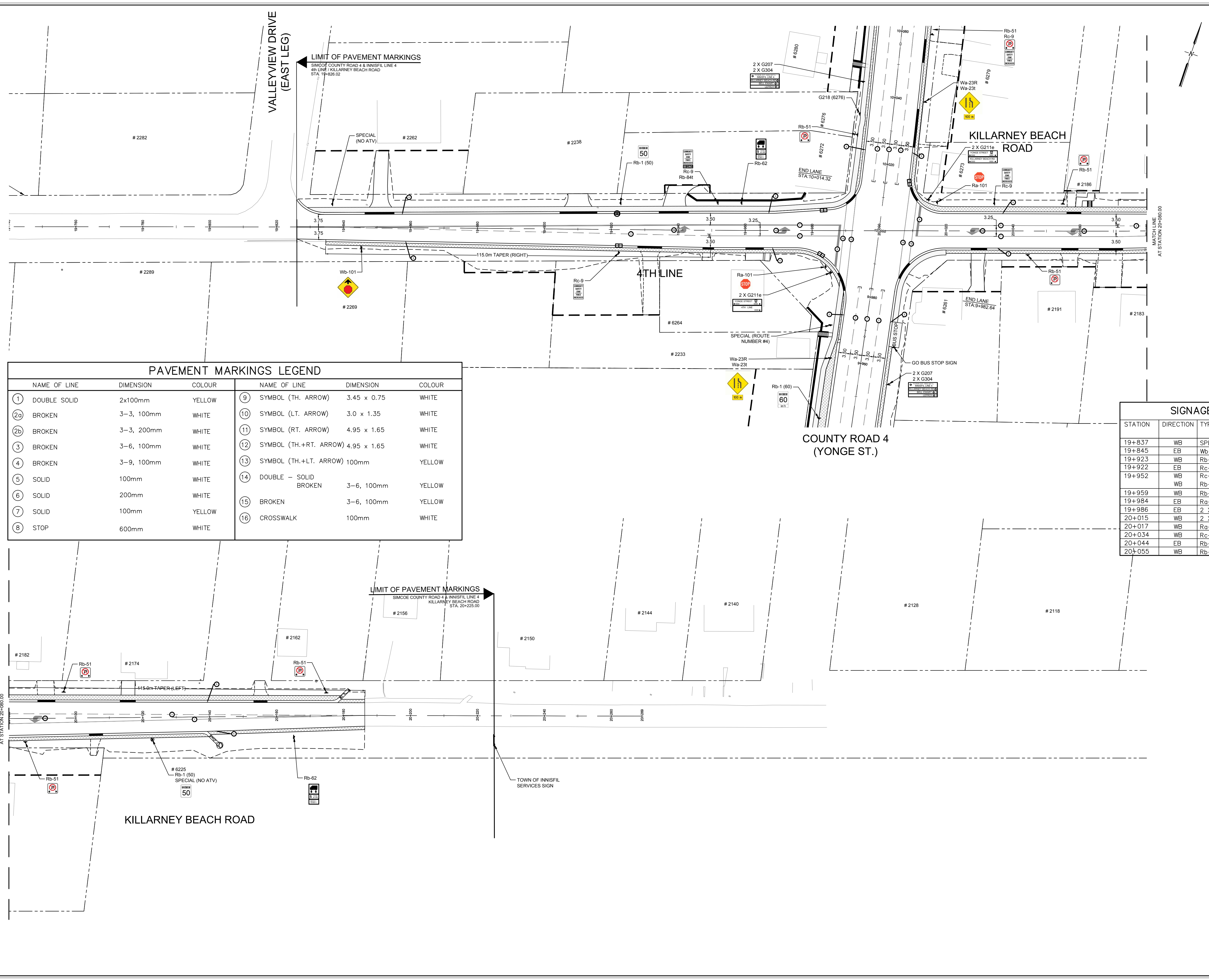
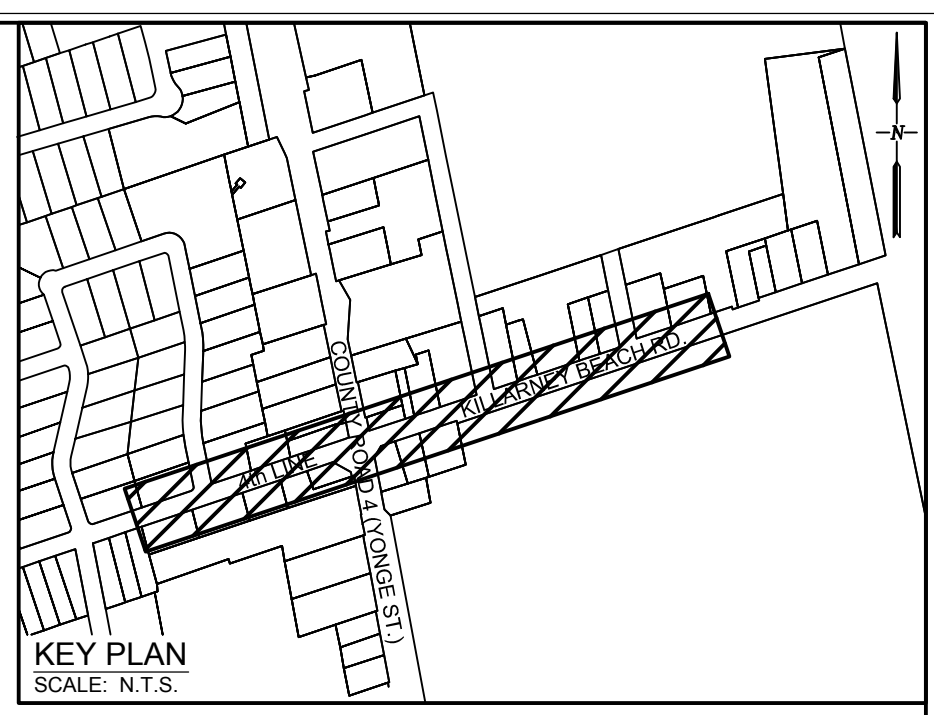
Client  
**COUNTY OF SIMCOE**  
 1110 HIGHWAY NO. 26  
 MIDHURST, ON  
 L9X 1N6

Drawing Title  
**SIMCOE COUNTY ROAD 4 AND INNISFIL 4TH LINE INTERSECTION IMPROVEMENTS**  
 PAVEMENT MARKING & SIGNAGE  
 COUNTY ROAD 4 (YONGE STREET)

Drawn	Checked	Designed	Checked	Date	Drawing No.
M.L.	D.D.	A.A.	D.D.		
				16/05/03	
Project No. 300033647	Contract No. 2022R4-645-01	Revision No. 1			<b>C-401</b>







**PAVEMENT MARKINGS LEGEND**

NAME OF LINE	DIMENSION	COLOUR	NAME OF LINE	DIMENSION	COLOUR
① DOUBLE SOLID	2x100mm	YELLOW	⑨ SYMBOL (TH. ARROW)	3.45 x 0.75	WHITE
②③ BROKEN	3-3, 100mm	WHITE	⑩ SYMBOL (LT. ARROW)	3.0 x 1.35	WHITE
②④ BROKEN	3-3, 200mm	WHITE	⑪ SYMBOL (RT. ARROW)	4.95 x 1.65	WHITE
③ BROKEN	3-6, 100mm	WHITE	⑫ SYMBOL (TH.+RT. ARROW)	4.95 x 1.65	WHITE
④ BROKEN	3-9, 100mm	WHITE	⑬ SYMBOL (TH.+LT. ARROW)	100mm	YELLOW
⑤ SOLID	100mm	WHITE	⑭ DOUBLE - SOLID BROKEN	3-6, 100mm	YELLOW
⑥ SOLID	200mm	WHITE	⑮ BROKEN	3-6, 100mm	YELLOW
⑦ SOLID	100mm	YELLOW	⑯ CROSSWALK	100mm	WHITE
⑧ STOP	600mm	WHITE			

**SIGNAGE**

STATION	DIRECTION	TYPE	NEW/RELOCATE
19+837	WB	SPECIAL	NEW
19+845	EB	Wb-101	NEW
19+923	WB	Rb-1(50)	NEW
19+922	EB	Rc-9	NEW
19+952	WB	Rc-9	NEW
	WB	Rb-84t	NEW
19+959	WB	Rb-62	NEW
19+984	EB	Ra-101	NEW
19+986	EB	2 X G211e	NEW
20+015	WB	2 X G211e	NEW
20+017	WB	Ra-101	NEW
20+034	WB	Rc-9	NEW
20+044	EB	Rb-51	NEW
20+055	WB	Rb-51	NEW

**SIGNAGE**

STATION	DIRECTION	TYPE	NEW/RELOCATE
20+085	EB	Rb-51	NEW
20+096	WB	Rb-51	NEW
20+123	EB	Rb-1(50)	NEW
	EB	SPECIAL	NEW
20+175	WB	Rb-51	NEW
20+165	EB	Rb-62	NEW
20+225	EB	SPECIAL	RELOCATE

Notes  
 1. This drawing is the exclusive property of R. J. Burnside & Associates Limited. The reproduction of any part without prior written consent of this office is strictly prohibited.  
 2. The contractor shall verify all dimensions, levels, and datums on site and report any discrepancies or omissions to this office prior to construction.  
 3. This drawing is to be read and understood in conjunction with all other plans and documents applicable to this project.

**NOT FOR CONSTRUCTION**

No.	Issue / Revision	Date	Auth.
0	ISSUE FOR 60% SUBMISSION	16/09/21	
1	ISSUE FOR 90% SUBMISSION	19/06/05	

**BURNSIDE**  
 R. J. Burnside & Associates Limited  
 128 Wellington St. W., Suite 301  
 Barrie, Ontario, L4N 8J6  
 Telephone: (705) 797-2047  
 Fax: (705) 797-2037  
 web: www.rjburnside.com

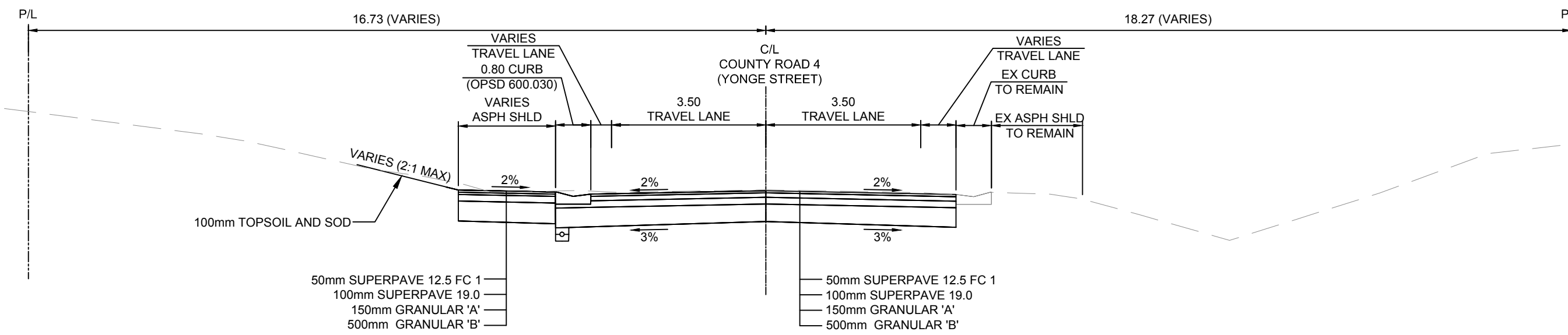
Client  
**COUNTY OF SIMCOE**  
 1110 HIGHWAY NO. 26  
 MIDHURST, ON  
 L9X 1N6

Drawing Title  
**SIMCOE COUNTY ROAD 4 AND INNISFIL 4TH LINE INTERSECTION IMPROVEMENTS**  
 PAVEMENT MARKING & SIGNAGE  
 4TH LINE / KILLARNEY BEACH ROAD

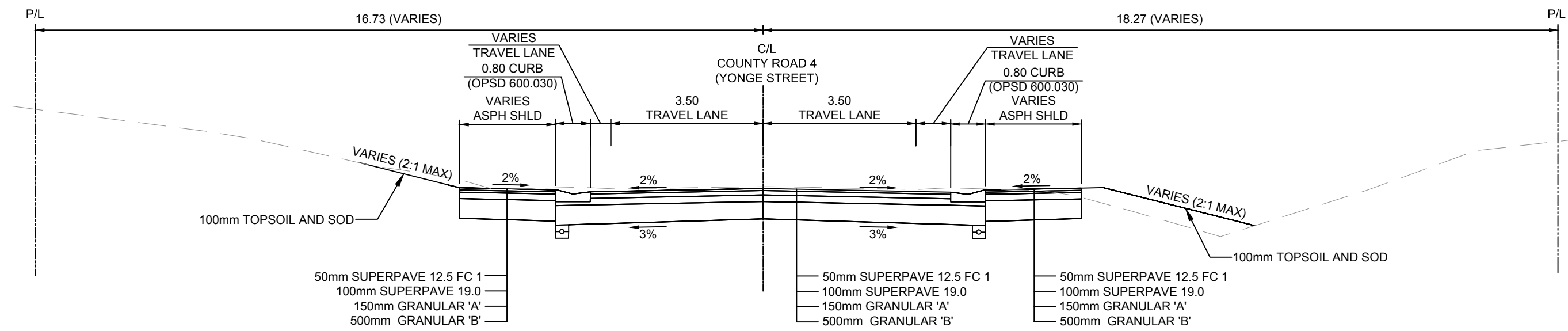
Drawn	Checked	Designed	Checked	Date	Drawing No.
M.L.	D.D.	A.A.	D.D.		
				16/05/03	
Project No. 300333647	Contract No. 2022R4-645-01	Revision No. 1			

Scale: 1:500  
 0 5.0 10.0 20.0 30.0m  
**C-402**

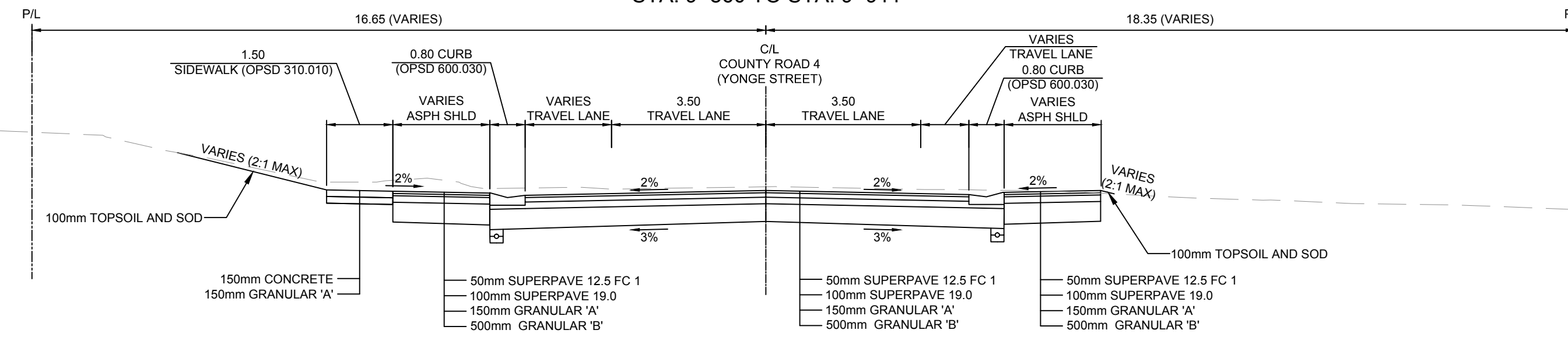
TYPICAL SECTION 1  
COUNTY ROAD 4 (YONGE STREET)  
STA. 9+722 TO STA. 9+790



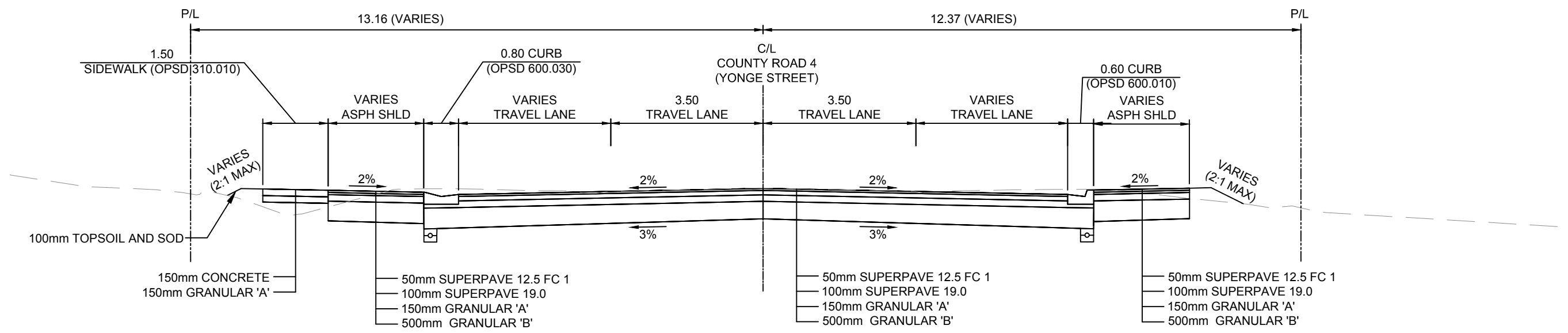
TYPICAL SECTION 2  
COUNTY ROAD 4 (YONGE STREET)  
STA. 9+790 TO STA. 9+860



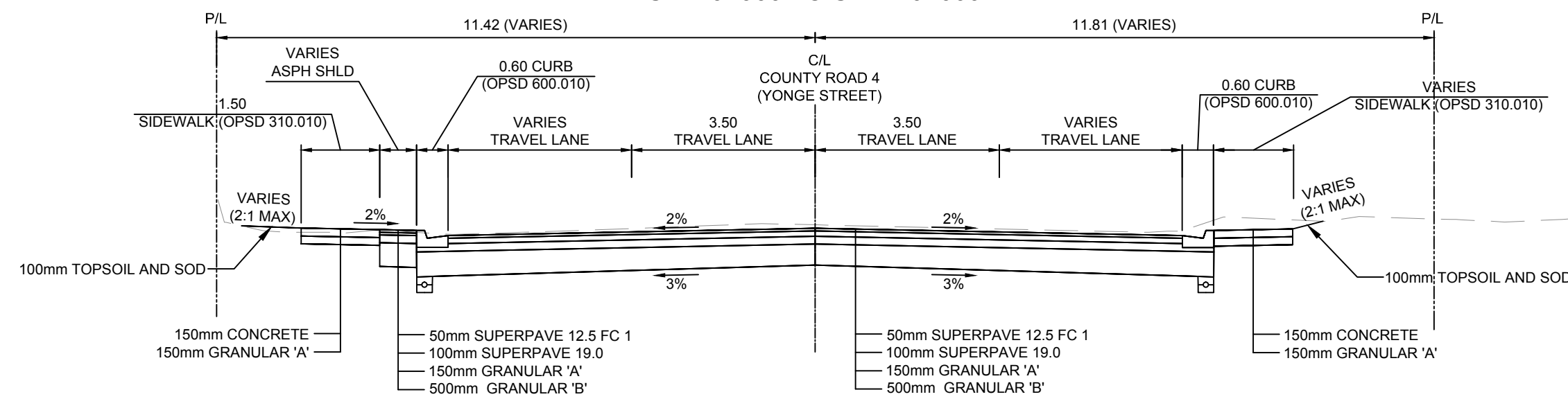
TYPICAL SECTION 3  
COUNTY ROAD 4 (YONGE STREET)  
STA. 9+860 TO STA. 9+911



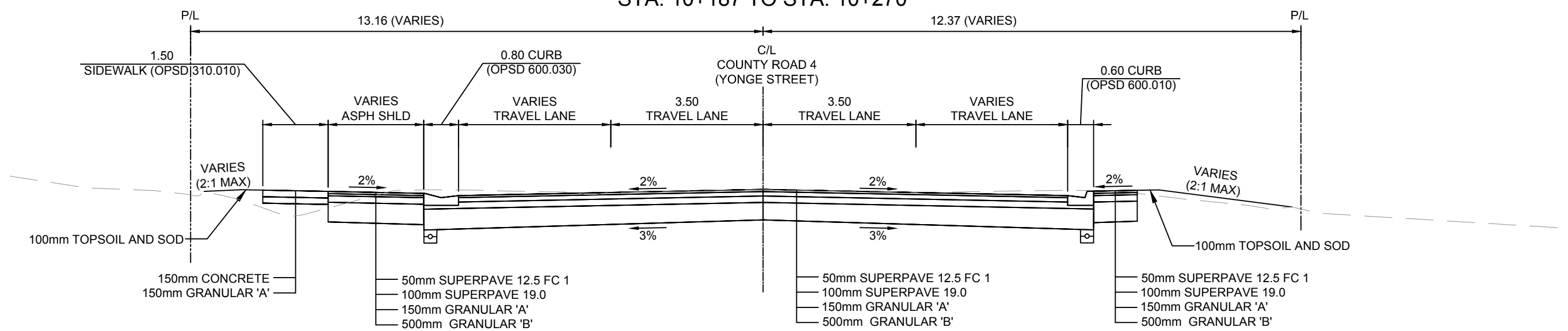
TYPICAL SECTION 4  
COUNTY ROAD 4 (YONGE STREET)  
STA. 9+911 TO STA. 9+966



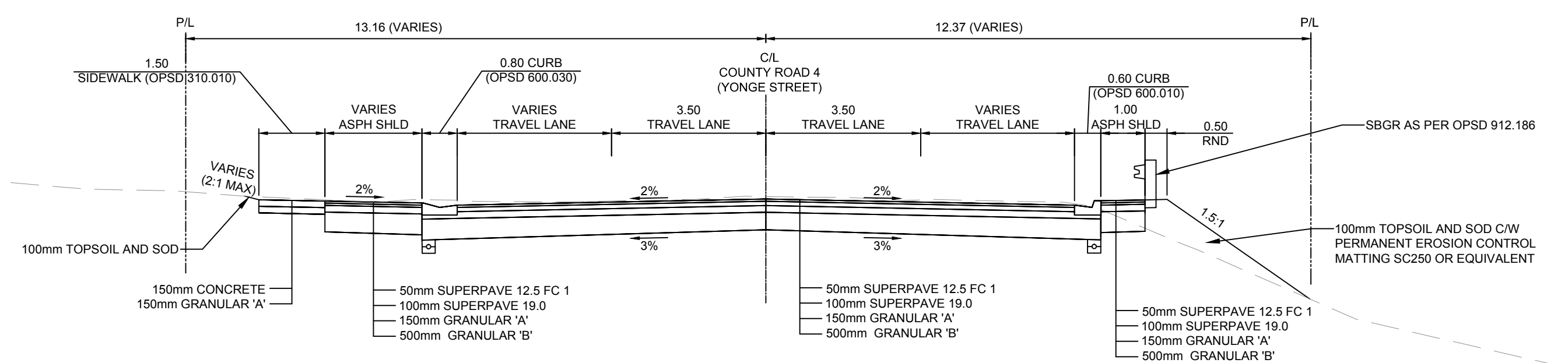
TYPICAL SECTION 5  
COUNTY ROAD 4 (YONGE STREET)  
STA. 9+966 TO STA. 10+000



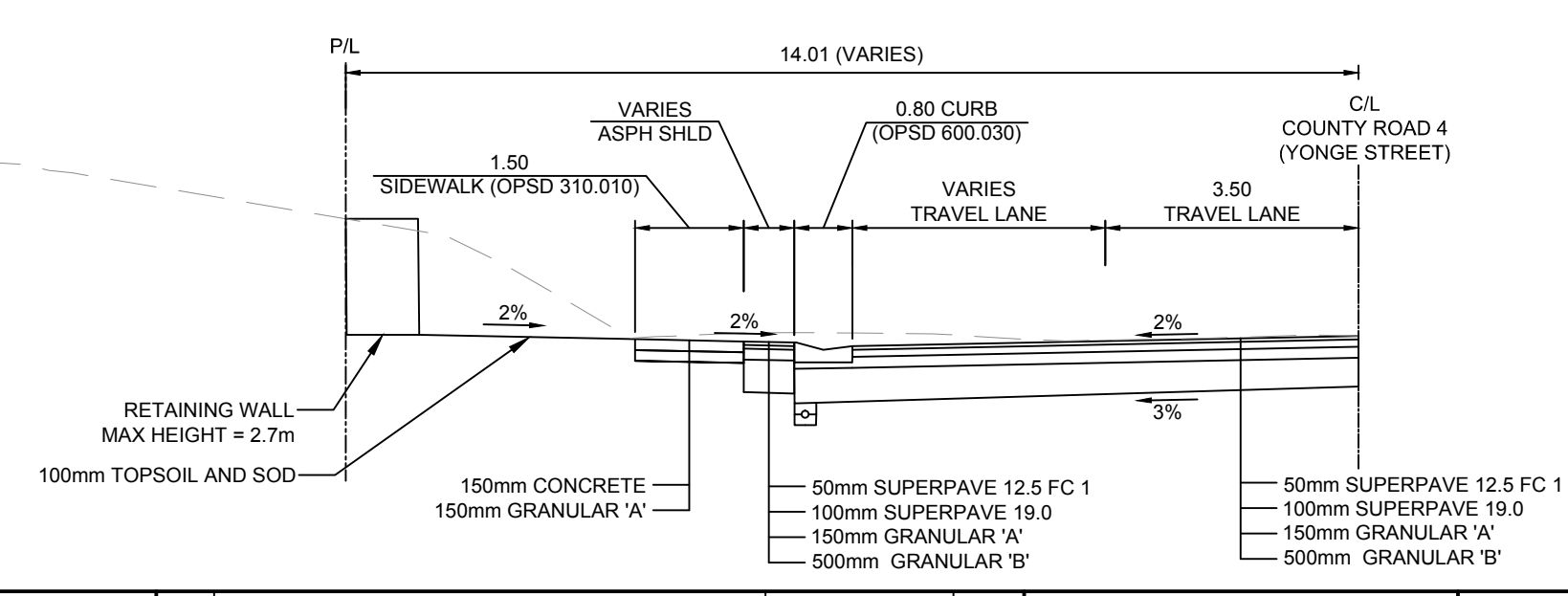
TYPICAL SECTION 6  
COUNTY ROAD 4 (YONGE STREET)  
STA. 10+000 TO STA. 10+107  
STA. 10+187 TO STA. 10+270



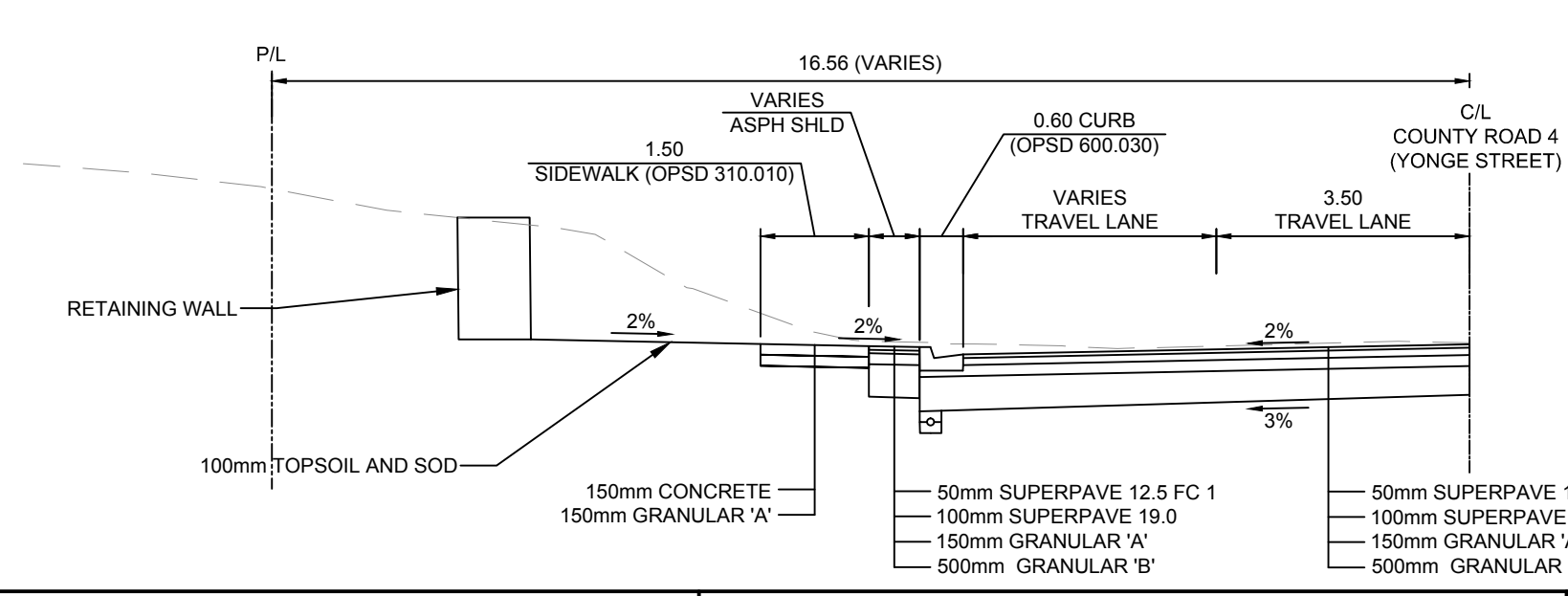
TYPICAL SECTION 7  
COUNTY ROAD 4 (YONGE STREET)  
STA. 10+107 TO STA. 10+187



TYPICAL WALL SECTION 1  
COUNTY ROAD 4 (YONGE STREET)  
STA. 9+911 TO STA. 9+975



TYPICAL WALL SECTION 2  
COUNTY ROAD 4 (YONGE STREET)  
STA. 10+042 TO STA. 10+063  
STA. 10+150 TO STA. 10+178



Notes:  
1. This drawing is the exclusive property of R. J. Burnside & Associates Limited. The reproduction of any part without prior written consent of this office is strictly prohibited.  
2. The contractor shall verify all dimensions, levels, and datums on site and report any discrepancies or omissions to this office prior to construction.  
3. This drawing is to be read and understood in conjunction with all other plans and documents applicable to this project.

No.	Issue / Revision	Date	Auth.
0	ISSUE FOR 60% SUBMISSION	16/06/21	
1	ISSUE FOR 90% SUBMISSION	19/06/05	

NOT FOR CONSTRUCTION



R. J. Burnside & Associates Limited  
128 Wellington St. W., Suite 301  
Barrie, Ontario, L4N 6J6  
Telephone (705) 797-2047  
Fax (705) 797-2037  
www.rjburnside.com

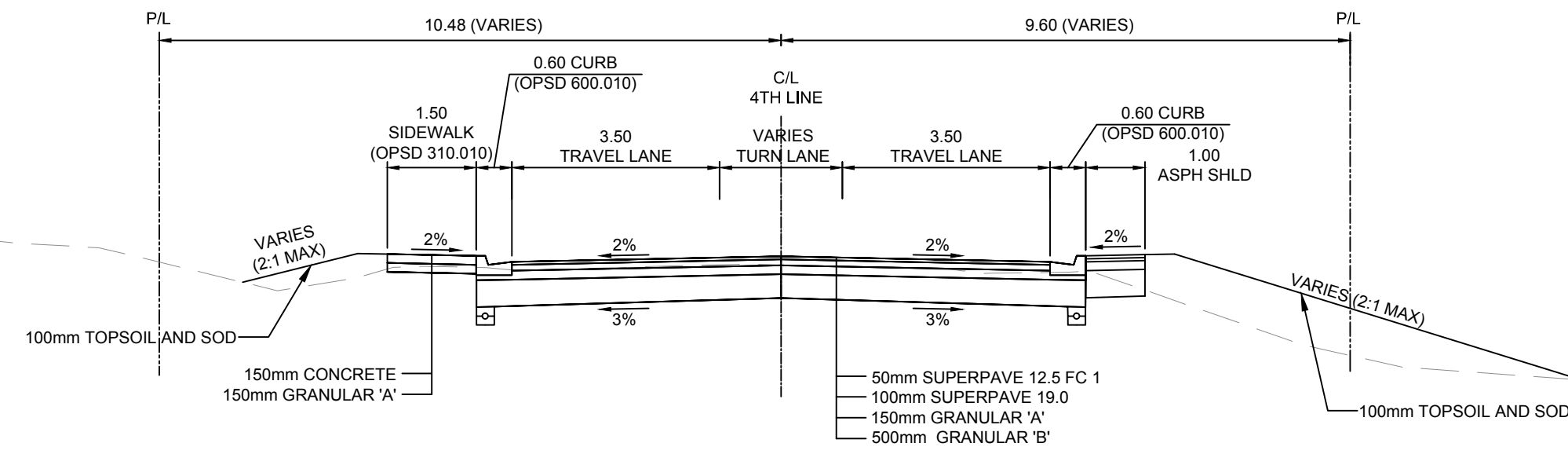
Client:  
COUNTY OF SIMCOE  
1110 HIGHWAY NO. 26  
MIDHURST, ON  
L9X 1N6

Drawing Title:  
SIMCOE COUNTY ROAD 4 AND INNISFIL 4TH LINE  
INTERSECTION IMPROVEMENTS  
TYPICAL SECTION  
COUNTY ROAD 4 (YONGE STREET)

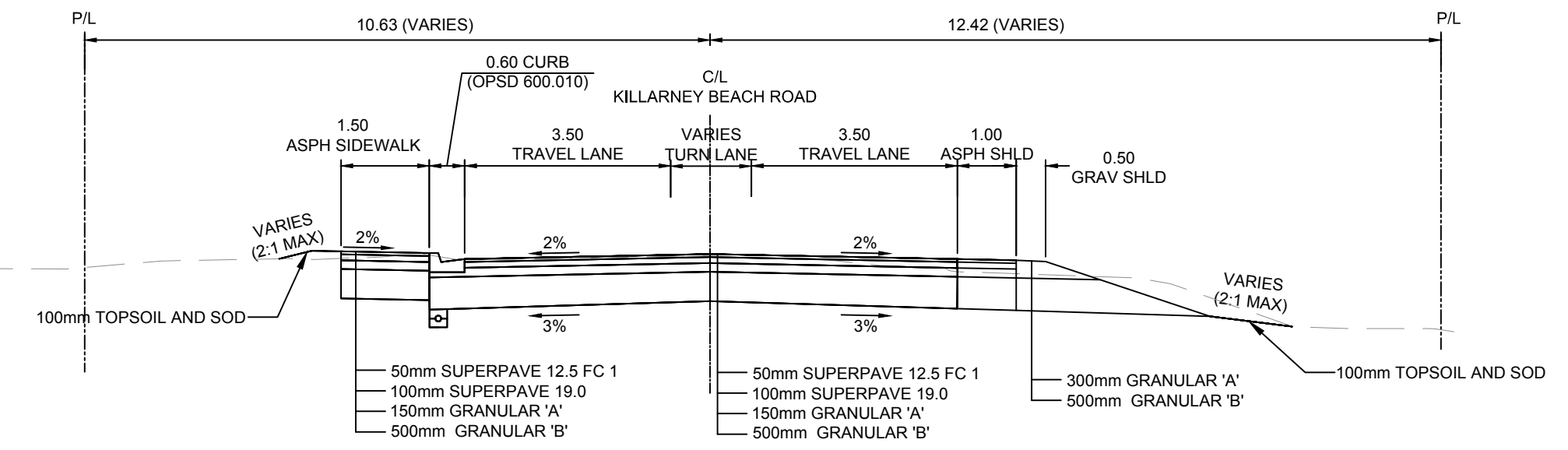
Drawn	Checked	Designed	Checked	Date	Drawing No.
M.L.	D.D.	A.A.	D.D.	16/05/03	
Project No.	Contract No.	Revision No.			
300033647	202R4-645-01	1			

C-601

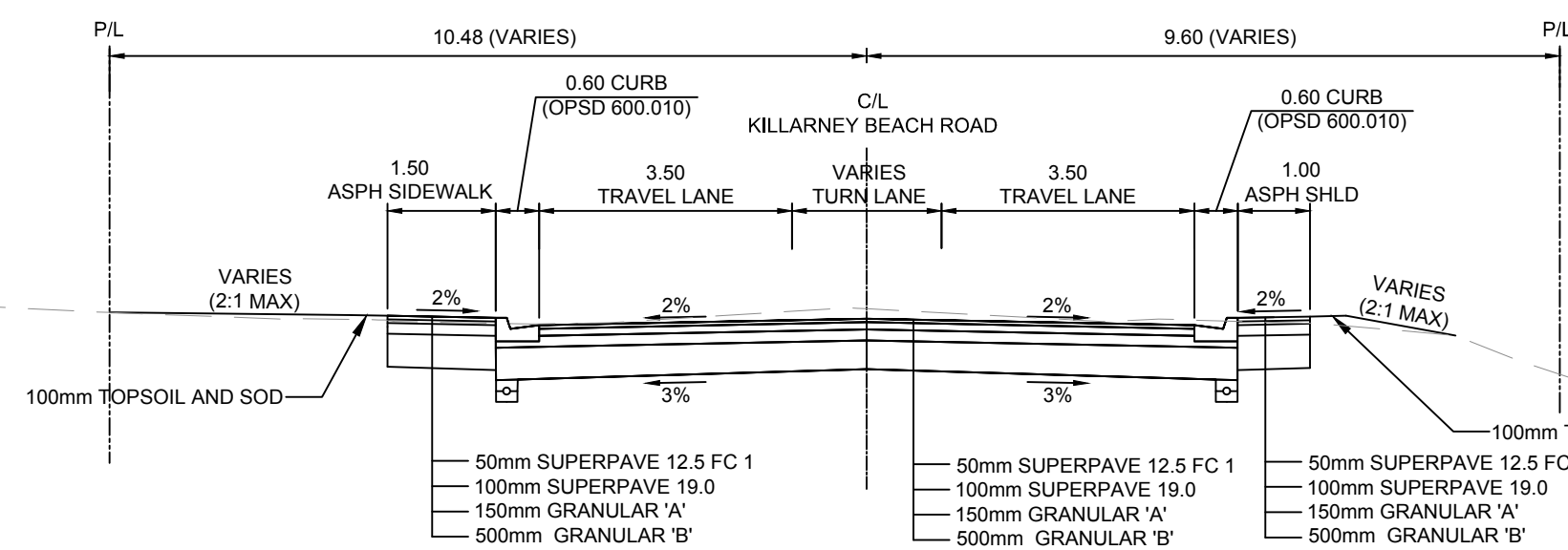
**TYPICAL SECTION 1  
4TH LINE  
STA. 19+826 TO STA. 19+942  
STA. 19+978 TO STA. 20+000**



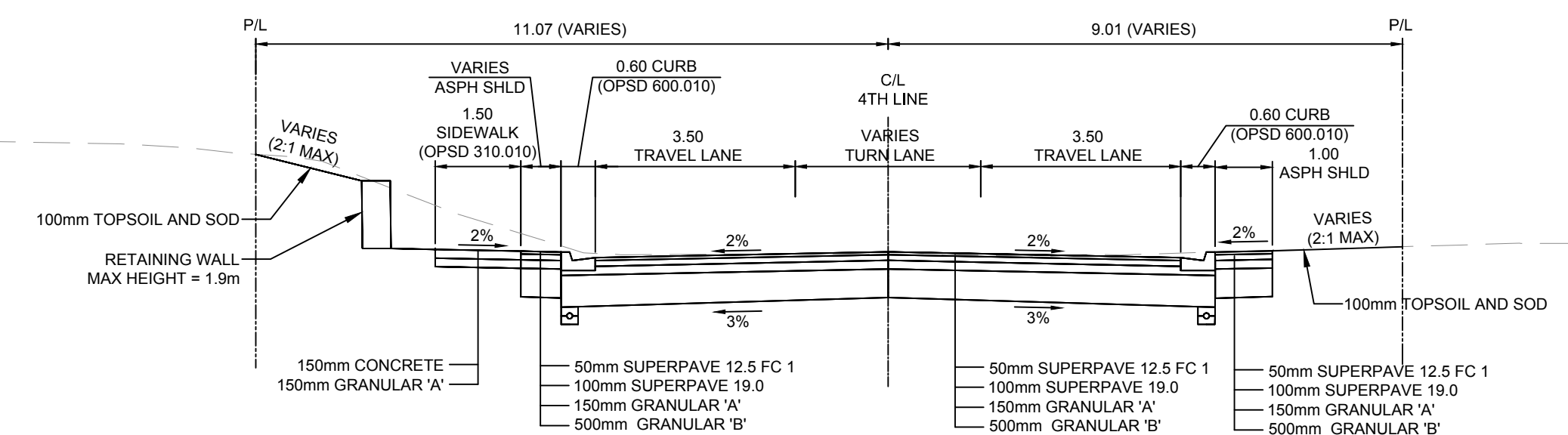
**TYPICAL SECTION 2  
KILLARNEY BEACH ROAD  
STA. 20+140 TO STA. 20+186**



**TYPICAL SECTION 3  
KILLARNEY BEACH ROAD  
STA. 20+000 TO STA. 20+140**



**TYPICAL WALL SECTION  
4TH LINE  
STA. 19+942 TO STA. 19+978**



- Notes
- This drawing is the exclusive property of R. J. Burnside & Associates Limited. The reproduction of any part without prior written consent of this office is strictly prohibited.
  - The contractor shall verify all dimensions, levels, and datums on site and report any discrepancies or omissions to this office prior to construction.
  - This drawing is to be read and understood in conjunction with all other plans and documents applicable to this project.

No.	Issue / Revision	Date	Auth.
0	ISSUE FOR 60% SUBMISSION	16/06/21	
1	ISSUE FOR 90% SUBMISSION	19/06/05	

**NOT FOR CONSTRUCTION**



**R.J. Burnside & Associates Limited**  
128 Wellington St. W., Suite 301  
Barrie, Ontario, L4N 6J6  
telephone (705) 797-2047  
fax (705) 797-2037  
web www.rjburnside.com

Client  
**COUNTY OF SIMCOE**  
1110 HIGHWAY NO. 26  
MIDHURST, ON  
L9X 1N6

Drawing Title  
**SIMCOE COUNTY ROAD 4 AND INNISFIL 4TH LINE  
INTERSECTION IMPROVEMENTS**  
TYPICAL SECTION  
4TH LINE / KILLARNEY BEACH ROAD

Drawn	Checked	Designed	Checked	Date	Drawing No.
M.L.	D.D.	A.A.	D.D.	16/05/03	<b>C-602</b>
Project No.	Contract No.	Revision No.			
300033647	20ZRR4-645-01	1			

Scale  
NOT TO SCALE