

County Road 4 and 4th Line Intersection Improvements County of Simcoe

Public Open House

Welcome



Hello and Welcome! Thank you for joining the online Public Open House for the County Road 4 and 4th Line Intersection Improvements Project. My name is Drew Davidge and I am a Professional Engineer with R.J. Burnside & Associates. I will be guiding you through this presentation on behalf of the County of Simcoe and the Project Team for this Open House.

This presentation will provide information on the project purpose, location, the proposed improvements and project timeline.

After viewing the presentation if you have any questions or concerns, we invite you to complete the online comment sheet. Your input is appreciated and will be considered and addressed by the Study Team.

Problem / Solution Statement:

County Road 4 (Yonge Street) is a major north-south arterial road connecting Barrie to South Simcoe and York Region. County Road 4 is also used as an alternate route instead of Highway 400.

The road is commonly used by residents commuting to and from work and people visiting the area for recreation and cottaging. This has resulted in increased traffic volumes in recent years.

Widening of the roads within the project site is necessary to provide improved safety and better traffic flow through Churchill.

Environmental Assessment

The project will follow Schedule A+ of the Municipal Class Environmental Assessment process, which is a pre-approved process under the Act.

Purpose of this Public Open House is to:

- Notify the public about the project
- Provide an overview of the Detailed Design Solution for the Project Site
- Engage residents for feedback
- Review the Project timelines
- Identify the next steps

County Road 4 (Yonge Street) is a major north-south arterial road connecting Barrie to South Simcoe and York Region. County Road 4 is also used as an alternate route to Highway 400.

The road is commonly used by residents commuting to and from work and people visiting the area for recreation and cottaging. This has resulted in increased traffic volumes in recent years.

Widening of the roads within the project site is necessary to provide improved safety and better traffic flow through Churchill.

The project will follow Schedule A+ of the Municipal Class Environmental Assessment process, which is a pre-approved process under the Act.

The purpose of this Open House is to:

- Notify the public about the project
- Provide an overview of the Detailed Design Solution for the Project Site
- Engage residents for feedback
- Review the Project timelines
- Identify the next steps



The intersection of County Road 4 and 4th Line/Killarney Beach Road is in the village of Churchill in the Town of Innisfil. The intersection is not signalized, and traffic is controlled by stop signs for east-west traffic.

County Road 4 consists of two-lanes (one in each direction) with a paved shoulder used for parking behind the curb on both sides.

The project site limits on County Road 4 extend from 250 metres south to 280 metres north of the intersection.

4th Line/Killarney Beach Road both consist of two-lanes (one in each direction).

The project site extends 200 metres west along 4th Line and 200 metres east along Killarney Beach Road.

The intersection of County Road 4 and 4th Line/Killarney Beach Road is in the village of Churchill, in the Town of Innisfil. The intersection is not signalized, and traffic is controlled by stop signs for east-west traffic.

County Road 4 consists of two-lanes (one in each direction) with a paved shoulder used for parking behind the curb on both sides.

The project limits on County Road 4 extend from North of Greg Gemmel Way to the Court House Parking Lot. The Project limits on the 4th Line are from Valley View Drive to 200m East of the Intersection.

Traffic and Transportation

The County Road 4 design includes:

- Road widening from two-lanes to four-lanes (two in each direction).
- Asphalt shoulders to maintain pedestrian access and on street parking.
- Regrading of driveways to match the new edge of pavement.



Active Transportation

- To accommodate pedestrians and cyclists, asphalt shoulders and sidewalks will be reinstated on County Road 4 and 4th Line.

The 4th Line/Killarney Beach Road design includes:

- Road widening to accommodate two-lanes (one in each direction) with an additional dedicated left-turn lane in both directions.



The County Road 4 design includes:

- Road widening from two-lanes to four-lanes.
- Asphalt shoulders to maintain pedestrian access and on street parking.
- Regrading of driveways to match the new edge of pavement.
- To accommodate pedestrians and cyclists, asphalt shoulders and sidewalks will be reinstated on County Road 4.

The 4th Line/Killarney Beach Road design includes:

- Road widening to accommodate two-lanes (one in each direction) and a dedicated left-turn lane in both directions.
- New Sidewalk on the North Side of 4th Line from Yonge Street to Valleyview Dr.

Storm Water

- The storm sewer network will be upgraded and the catchbasins will be relocated to match the new curb location
- The storm sewer will be extended further south on County Road 4 to accommodate the widened road.
- Ditches will be regraded and driveway culverts will be replaced.

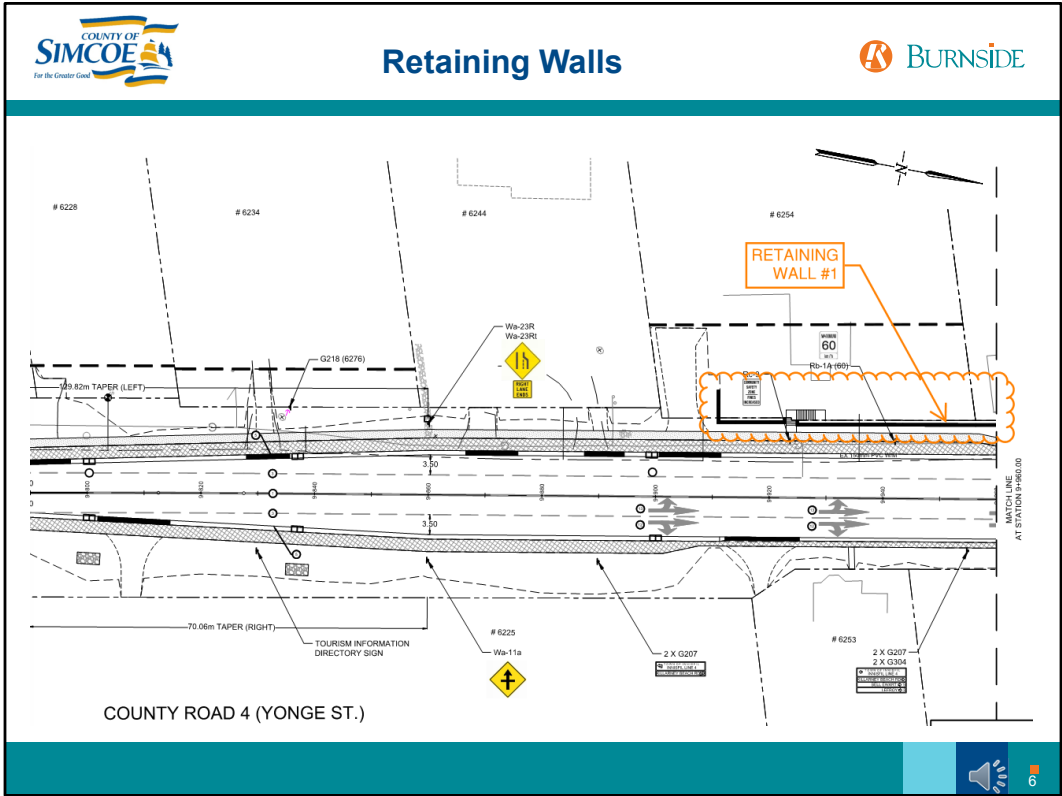


Retaining Walls and Concrete Stairs

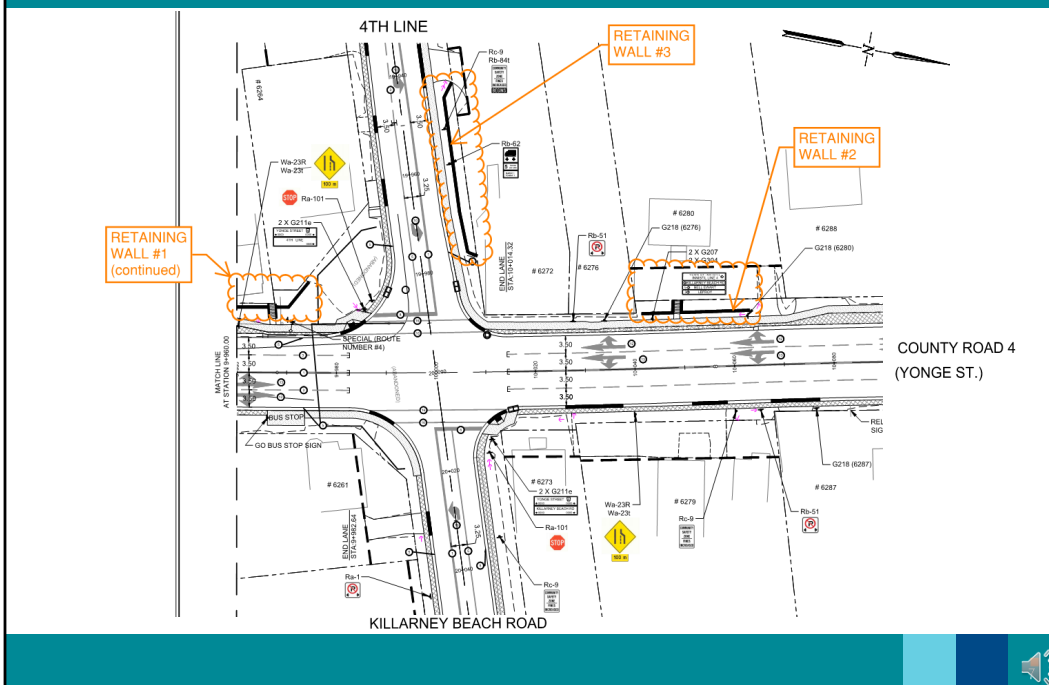
- Retaining walls will be installed on public property to accommodate sidewalks and avoid negatively impacting private property.
 - #6254, #6272 and #6280 Yonge Street
 - #2233 4th Line
- Existing concrete stairs and handrails will be replaced to maintain access to the sidewalk.



- The storm sewer network will be upgraded and extended further south on County Road 4 to accommodate the widened road.
- Ditches will be regraded and driveway culverts will be replaced.
- Retaining walls will be installed on public property to accommodate sidewalks and avoid negatively impacting private property.
- Existing concrete stairs and handrails will be replaced to maintain access to the sidewalk.



A retaining wall and new stairs are required in front of the St. Peters Anglican Church shown here as retaining wall #1.



Retaining wall #1 will continue North in front of property # 2233 and the stairs will be replaced.

Another retaining wall shown here as retaining wall #2 is required in front of property #6280

A 3rd retaining wall is required on the 4th Line to allow for the installation of a new sidewalk along 4th Line to Valley View Drive.

Traffic Control

- The intersection will remain controlled by stop signs for east-west traffic.
- Traffic volumes will continue to be monitored and provisions have been made to allow for traffic signals in the future if warranted.
- Vehicles turning left from County Road 4 to 4th Line or Killarney Beach Road will be given an opportunity to wait to make a safe turn without impeding traffic flow on County Road 4.
- The addition of a designated left-turn lane on 4th Line and Killarney Beach Road will allow left-turning vehicles to wait for an opportunity to make a safe turn without impeding vehicles from making a right-turn.

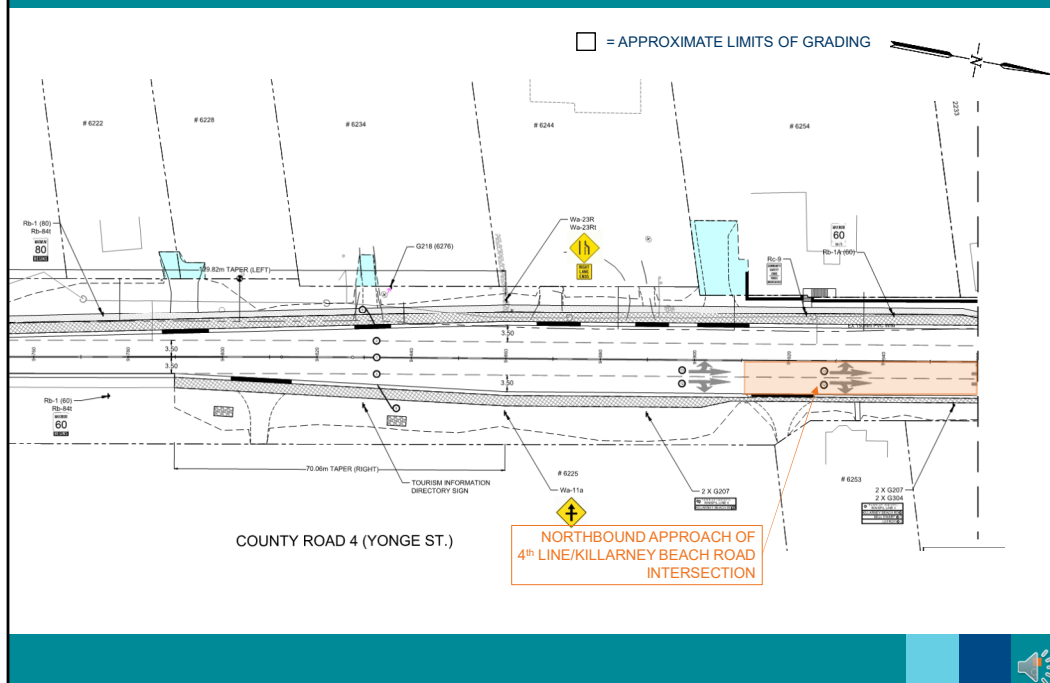


The intersection will remain controlled by stop signs for east-west traffic.

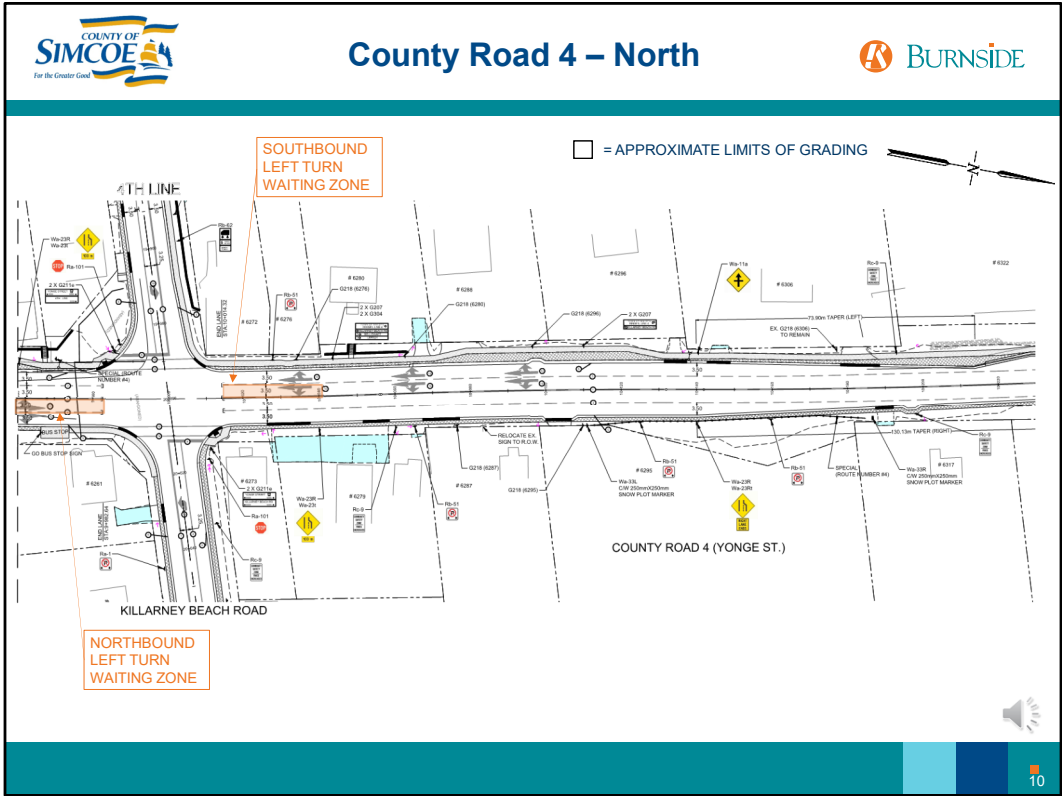
Traffic volumes will continue to be monitored and provisions have been made to allow for traffic signals in the future if warranted.

Vehicles turning left from County Road 4 to 4th Line or Killarney Beach Road will be given an opportunity to wait to make a safe turn without impeding traffic flow on County Road 4.

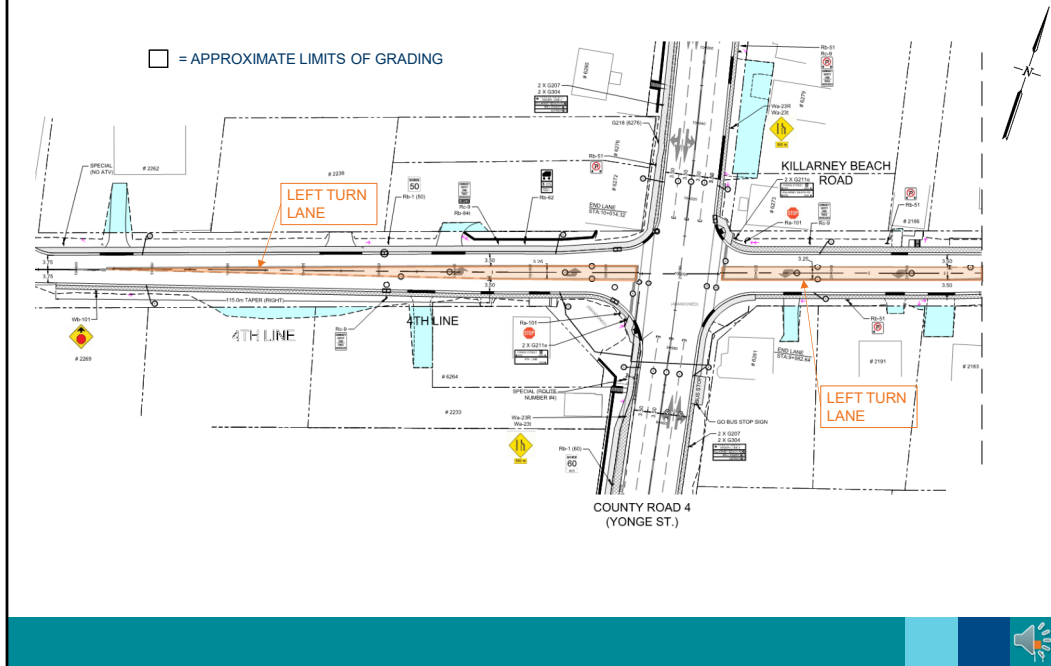
The addition of a designated left-turn lane on 4th Line and Killarney Beach Road will allow left-turning vehicles to wait for an opportunity to make a safe turn without impeding vehicles from making a right-turn onto County Road 4.



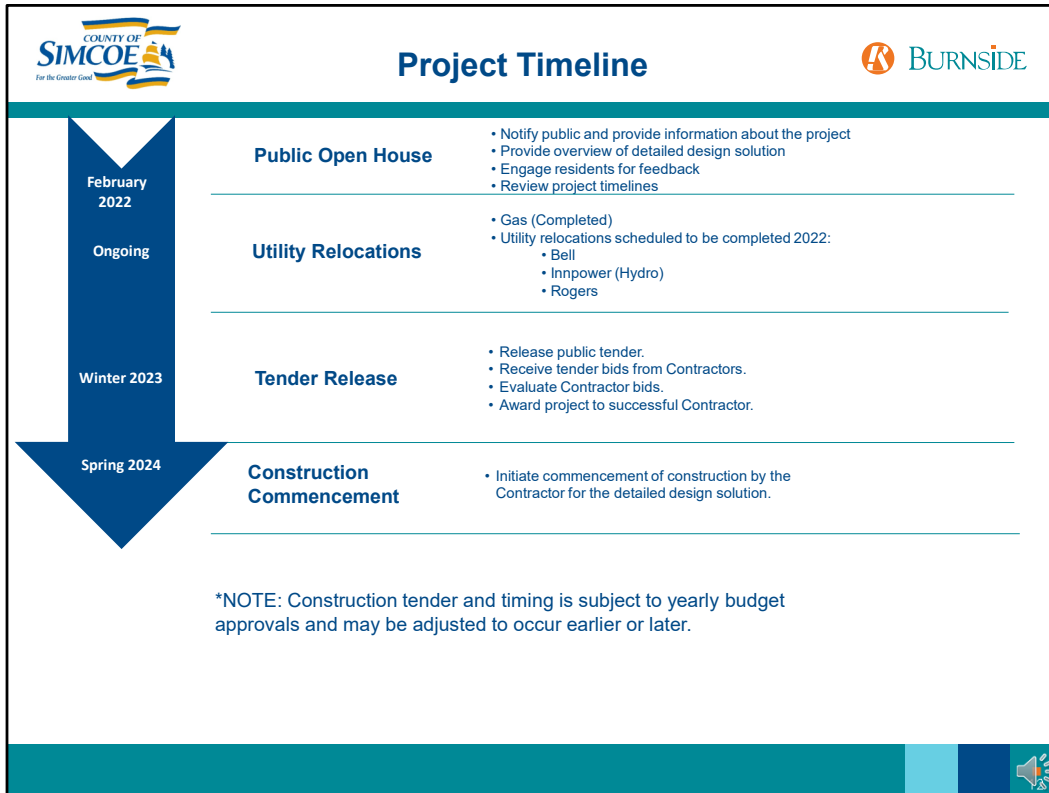
This slide shows the proposed improvements to County Road 4 South of the intersection with north to the right of the screen. The blue shaded areas show locations where grading on private property is required to provide a smooth driveway transition to the widened roadway. All disturbed areas will be restored with asphalt, gravel or sod to match the existing conditions.



This Slide shows the proposed intersection improvements and County Road 4 North of the intersection. The orange shaded areas show the location where left turning vehicles can wait to make a safe turn without impeding traffic flow on County Road 4.



This Slide shows the proposed intersection improvements and the 4th Line with North to the top of the screen. The orange shaded areas show the location where left-turning vehicles can wait for an opportunity to make a safe turn without impeding vehicles from making a right-turn



The Public Open house was posted online and advertised on Feb. 2 2022.

Utility Relocations are ongoing. Enbridge gas has relocated the Gasmain and Bell, Innpower and Rogers are scheduled to complete relocations in 2022 which will allow for the road widening.

The Construction tender is scheduled to be released in Winter 2023 pending approval in the annual budget with road construction anticipated to commence in 2024.

It should be noted that construction timing may occur earlier or later based on budget approvals.



Thank you for participating



- We welcome you to submit comments using the form available on the County's website at the link provided.
- Information materials about the project are available online at <https://simcoe.ca/dpt/trs/notices> for review and will be open for comments from the public until March 3, 2022.

- Your comments will be addressed by the following members of the Project Team:

Claire Walker, P.Eng. PMP
Project Engineer
County of Simcoe, Transportation & Engineering
1110 Highway 26
Midhurst, Ontario L9X 1N6
T 705-726-9300, Ext. 1168
Email: claire.walker@simcoe.ca

Drew Davidge, P.Eng.
Project Engineer
R. J. Burnside & Associates Limited
128 Wellington Street West #301
Barrie, Ontario L4N 8J6
T 705-797-4358
Email: drew.davidge@rjburnside.com

Project and notice information will be made accessible upon request in accordance with the Accessibility Standard for Information and Communication under the Accessibility for Ontarians with Disabilities Act, 2005



A copy of this presentation is available for download on the study's website.

If you have specific questions for the Study Team, please leave them on the online comment form.

On behalf of the County of Simcoe, R.J. Burnside & Associates, and the Study Team, we would like to thank you for viewing the materials and participating in this Public Open House.