



ONE SITE, ONE SOLUTION

2976 Horseshoe Valley Road West

ORGANICS PROCESSING FACILITY
MATERIALS MANAGEMENT FACILITY

April 19, 2016
Public Information Sessions

Preferred Site

2976 Horseshoe Valley Road West

has been selected as the site for the proposed
Organics Processing Facility (OPF) and Materials Management Facility (MMF)

What's an OPF?

An Organics Processing Facility
is a location where organics (green bin material and potentially materials such as leaf and yard waste, pet waste, and diapers) are processed and converted into other products, such as compost or fertilizer.



What's a MMF?

A Materials Management Facility
is a location where waste from multiple collection vehicles is consolidated and transferred. This allows for cost-effective shipment to other processing/disposal locations.

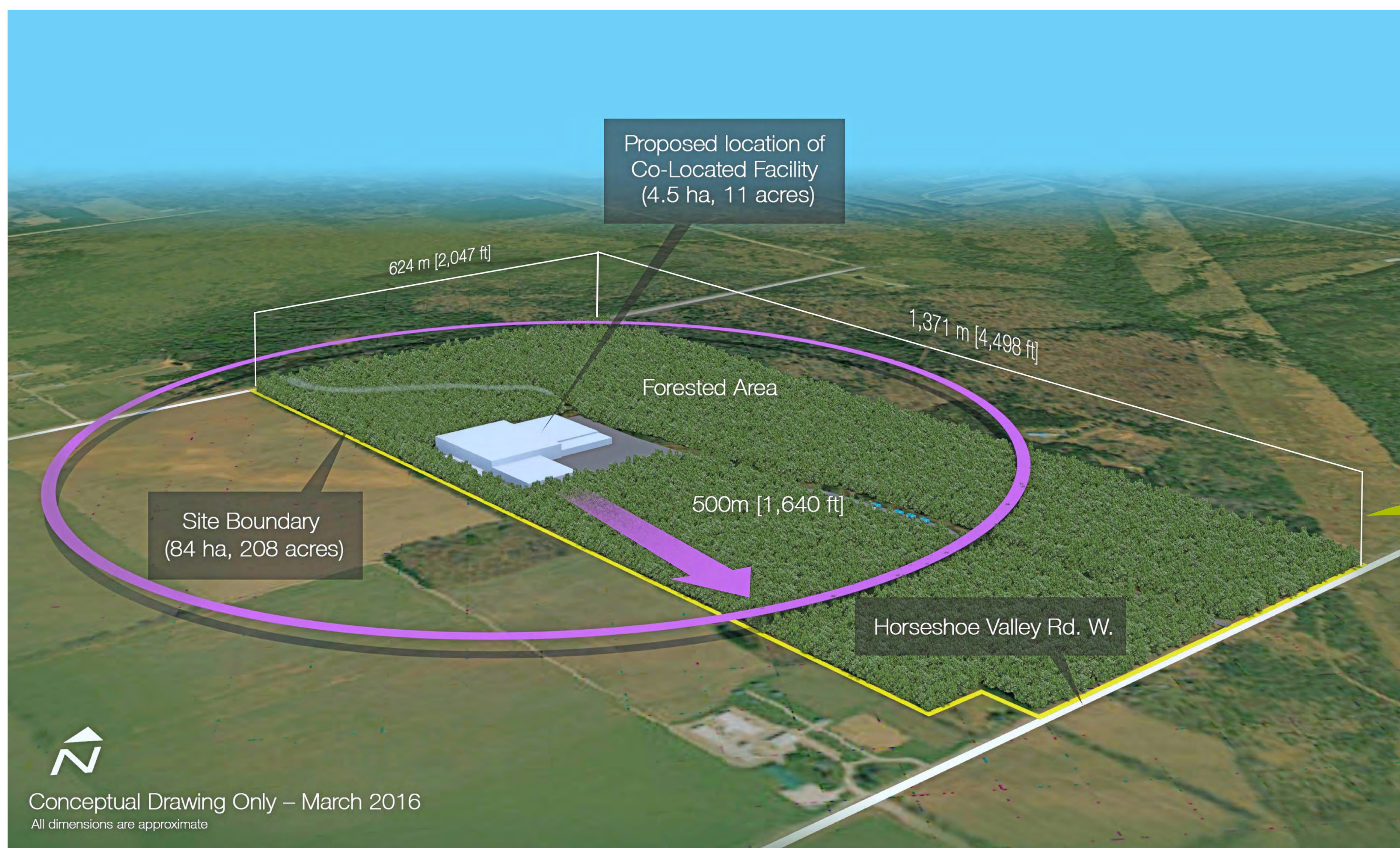
One site, one solution

- ▶ County transfer operations for garbage and recycling
- ▶ On-site organics processing
- ▶ Truck servicing facilities
- ▶ Potential public education space



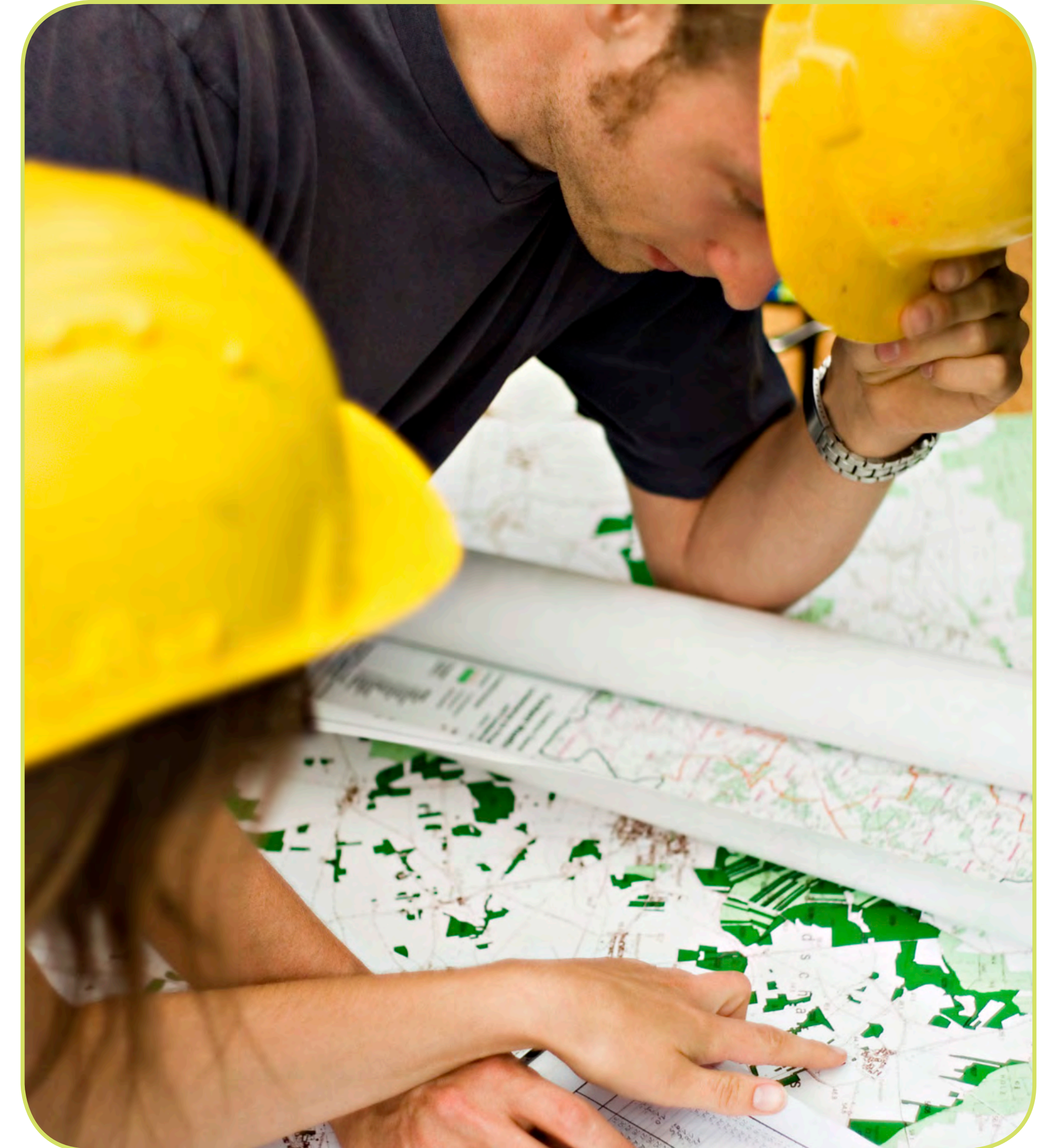
Preferred Site

2976 Horseshoe Valley Road West



Upcoming Studies

- ▶ environmental, planning, and engineering studies to be undertaken this spring/summer
- ▶ studies will:
 - assess site conditions
 - be included with Planning and Environmental Compliance Approval applications



Four key studies to be initiated first

Environmental Impact
Study (Statement)

Geotechnical/
Hydrogeological

(soil tests, confirmation
of groundwater and surface water
conditions, and establishment
of monitoring wells)

Traffic Impact Study

Archeological Study

Continuing Engagement

- ▶ public, Aboriginal, and stakeholder engagement will be imperative to the success of this project
- ▶ consultation on organics processing technology later this year
- ▶ continued conversation with near neighbours regarding design, procurement, and compensation



How can I keep informed?

Information and
Consultation
Sessions

Webpages
simcoe.ca/opf
simcoe.ca/mmf

Contact List
Updates

Customer
Service



Site Design and Processing Technology

MMF

- ▶ building for transfer of garbage and blue box recycling
- ▶ no long-term storage
- ▶ simple design and procurement

OPF

- ▶ uses technology to process green bin material on-site
- ▶ designed to accommodate growth (what the County will collect in 30 years)
- ▶ currently collect 10,000 tonnes per year of green bin organics
- ▶ potential addition of diapers and pet waste
- ▶ two types of technology for consideration – aerobic composting or anaerobic digestion



Site Design and Processing Technology

ODOUR

How is odour controlled?

- ▶ modern odour control measures will be incorporated into design of the buildings
- ▶ enclosed facilities will have fast-action doors and operate under negative air pressure
- ▶ good separation distances from nearby homes

WATER

How will water be managed at these facilities?

- ▶ collecting and containing process water and runoff will be incorporated into design
- ▶ some water usage is expected for cleaning activities and potentially organics processing (depending on technology)

NOISE

How is noise controlled?

- ▶ noise control measures will be incorporated into design and operation of the facility
- ▶ significant separation distances from nearby homes
- ▶ the facility will be required to adhere to noise regulations



Transportation



TRAFFIC

What is the impact on traffic when the facility opens?

- ▶ based on current operations, 87 vehicles per day will be received at the facility – resulting in 174 in and out movements per day
- ▶ this is a 2.6% increase in current two-way traffic volumes along Horseshoe Valley Road West (CR 22)
- ▶ there would be capacity at this time to accept additional vehicles bringing recycling and organics (up to the 30-year design capacity noted below)

What is the long-term potential impact on traffic?

- ▶ based on 30-year projections and growth, 210 vehicles per day will be received at the facility in 2046 – resulting in 420 in and out movements per day
- ▶ this is a 6% increase in current two-way traffic volumes along Horseshoe Valley Road West (CR 22)

ACCESS

- ▶ location will provide transportation efficiencies
- ▶ close and convenient access to major highways and transportation networks – an important consideration for the MMF
- ▶ projected increases in traffic on this portion of Horseshoe Valley Road West will be furthered analyzed in a Traffic Impact Study (TIS)

Transportation

TIS

What is a Traffic Impact Study (TIS)?

- ▶ the main purpose of a Traffic Impact Study (TIS) is to examine the impact of traffic generated by the proposed development at its access, at nearby intersections, and interchanges to determine any necessary highway design improvements required

What will it determine?

- ▶ it will evaluate the safe and efficient access and traffic flow around the facility
- ▶ determine required upgrades to Horseshoe Valley Road West and access to the facility

When will it be conducted?

- ▶ this study will be initiated in late spring/early summer 2016
- ▶ it will consider seasonal increases in traffic

Who will conduct the study? Will it be made public?

- ▶ a qualified transportation consultant will undertake this work and make recommendations to the County
- ▶ the report will be presented to County Council and become public information
- ▶ it will support both County and Township of Springwater Planning applications



Planning

- ▶ changes will be required to the County Official Plan, as well as the Township of Springwater Official Plan and Zoning By-law
- ▶ pre-consultation meetings have occurred with the Township of Springwater and provincial ministries to outline the studies that will be needed to inform land use Planning applications
- ▶ using the 2008 Draft Simcoe County Greenlands mapping, a scoped Environmental Impact Study (Statement) (EIS) has been initiated to confirm the conditions noted in the siting reports

STUDIES

Other studies to be completed include:

- ▶ Planning Justification Report
- ▶ Soil Quality Test
- ▶ Agricultural Potential Assessment
- ▶ Traffic Impact Study
- ▶ Environmental Impact Study (Statement)
- ▶ Noise Assessment
- ▶ Odour Impact Assessment
- ▶ Site Plan Design
- ▶ Landscape Plan/Tree Preservation Plan
- ▶ Stormwater Management Report
- ▶ Functional Servicing
- ▶ Hydrogeological Study
- ▶ Archeological Study
- ▶ Hazard Land Assessment (to NVCA satisfaction)



Planning

EIS

What will an Environmental Impact Study (Statement) (EIS) include?

- ▶ this study will examine natural features of the property (including soils, vegetation, wildlife, topography, watercourses/bodies) and the ecological functions they provide
- ▶ will include a description of potential impacts of the development and how the environmental characteristics and features will be maintained
- ▶ work will be done in consultation with the Ministry of Natural Resources and Forestry (MNRF), Nottawasaga Conservation Authority (NVCA), and the Township of Springwater

Who will conduct the study? Will it be made public?

- ▶ a qualified consultant (with expertise in species identification, biological, ecological and/or environmental functions) will undertake this work and prepare a report to the County
- ▶ it will be presented to County Council and become public information
- ▶ it will guide where development can occur on the site and inform the land use Planning applications that are required

A preliminary assessment of natural heritage features was undertaken in January 2016. Additional site investigations will further assess natural features.



Forestry

LOCATION

2976 Horseshoe Valley Road West

- ▶ purchased by the County of Simcoe in 1948
- ▶ majority of tree planting was completed in 1949 with smaller amounts of infill planting in subsequent years
- ▶ as a working forest, plantations within this tract are scheduled to be assessed in 2017 for harvesting as part of regular forestry management

How will these facilities and the forest tract coexist?

- ▶ site design will allow for continued use of the forest for recreational purposes
- ▶ the facility footprint is anticipated to be 11 acres (approximately 5%) of the 207 acre location
- ▶ replanting of trees will be considered for trees cleared for construction



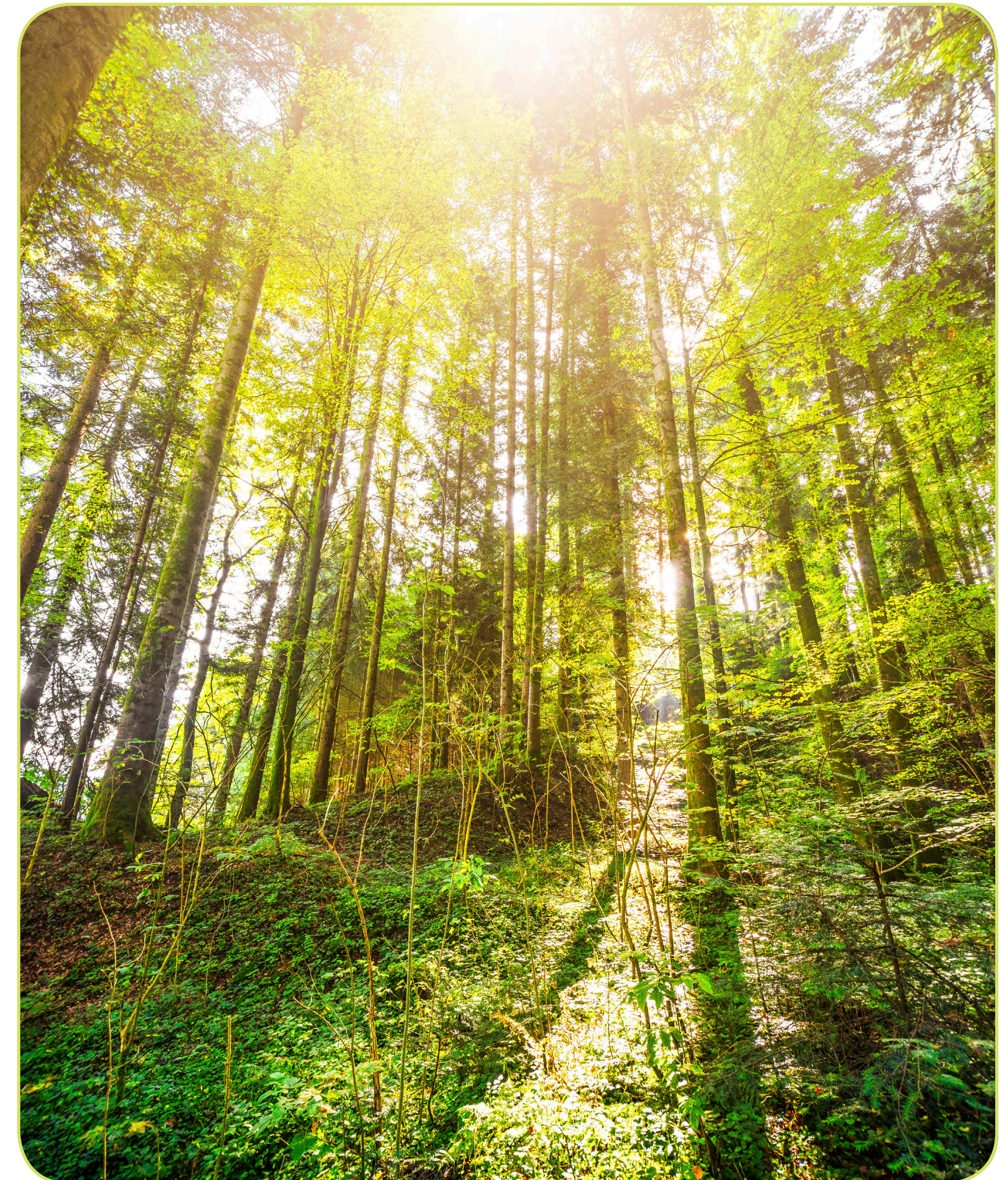
Did you know?

More than 20 million trees have been planted in the Simcoe County Forest since inception, with more than 240,000 seedlings planted within the last five years.

Forestry

COUNTY FORESTS

- ▶ at 32,600 acres (150 properties), the Simcoe County Forest is the largest municipally-owned forest in Ontario and among the largest of its kind in Canada
- ▶ within the past decade, the County Forest has expanded by more than 3,600 acres; in 2015 alone, a further 436 acres has been added in Springwater, Oro Medonte, and Clearview Townships
- ▶ as a 'working forest', approximately 1,200 to 1,500 acres are thinned annually to maintain forest health, improve future timber values and achieve other objectives
- ▶ County of Simcoe Forestry first achieved FSC® certification in July 2010 and is widely recognized for its conservation efforts and ongoing forest expansion initiatives



The mark of
responsible forestry

