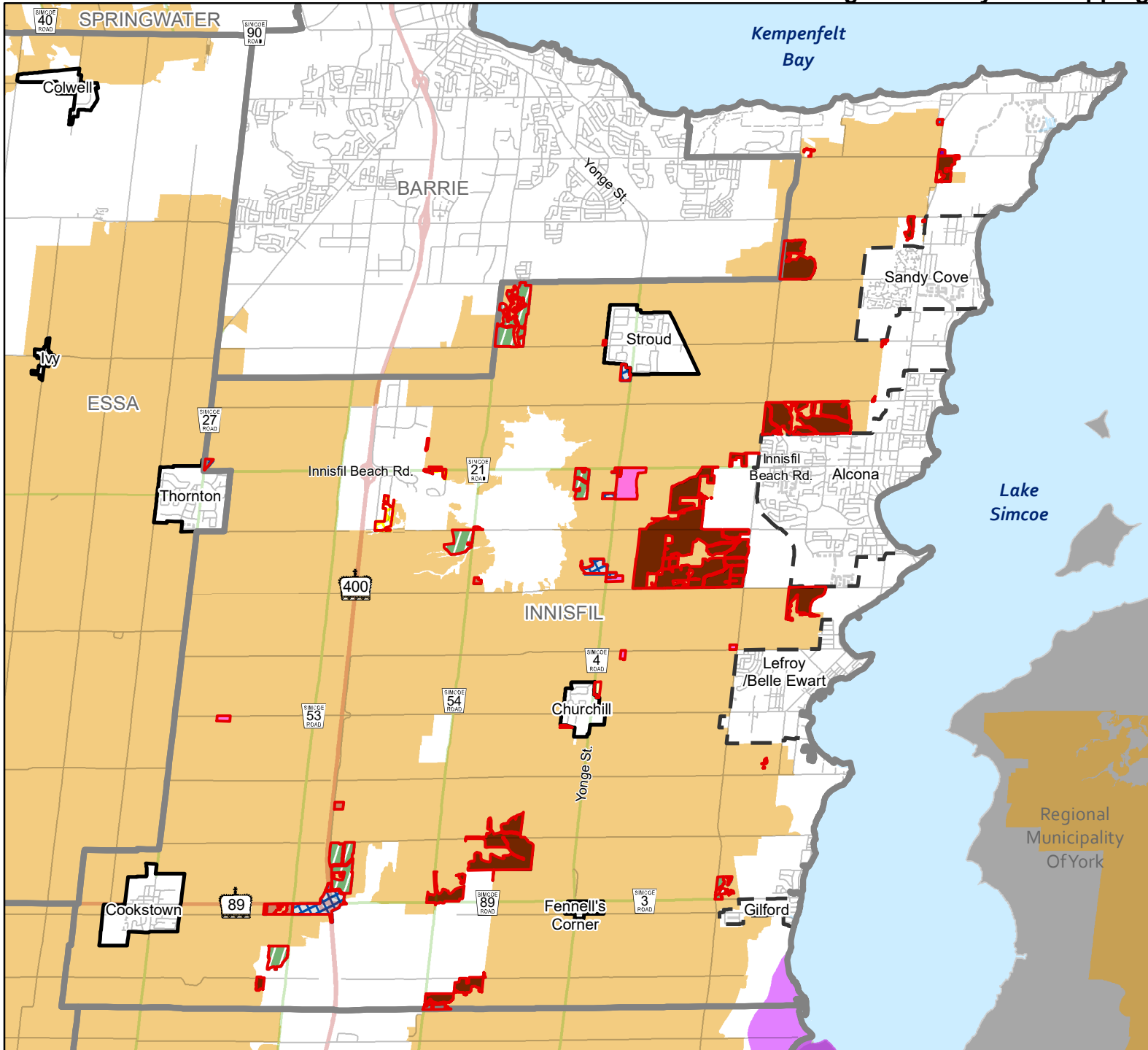



# Non-decision Lands to the Town of Innisfil Official Plan Schedule B: Land Use Where There is a Conflict with the Provincial Agricultural System Mapping



- Non-decision Lands
- Provincial Agricultural System Land Base**
- Prime Agricultural Area
- Specialty Crop Area
- Underlying Local Land Use Designation**
- Community Space
- Estate Residential Area
- Parks and Open Space
- Resort Recreational
- Rural Area
- Rural Commercial
- Rural Industrial
- Shoreline Residential Area
- Residential, Residential Low Density 1

This map is made up of areas of the Innisfil Official Plan shown on Schedule B: Land Use where they conflict with the Provincial Agricultural System Mapping shown on Schedule BB: Agricultural Land Base.



 This map, either in whole or in part, may not be reproduced without the written authority from the County of Simcoe.  
 Copyright © County of Simcoe  
 Land Information Network Cooperative - LINC 2018  
 Produced (in part) under license from: the City of Barrie & Oshawa, the Ontario Ministry of Natural Resources (Copyright - Queens Printer 2018).  
 © Terres Enterprises Inc. and its suppliers all rights reserved.  
 and Members of the Ontario Geospatial Data Exchange.  
 THIS IS NOT A PLAN OF SURVEY.  
 For information call (705) 726-9300 or visit www.simcoe.ca