



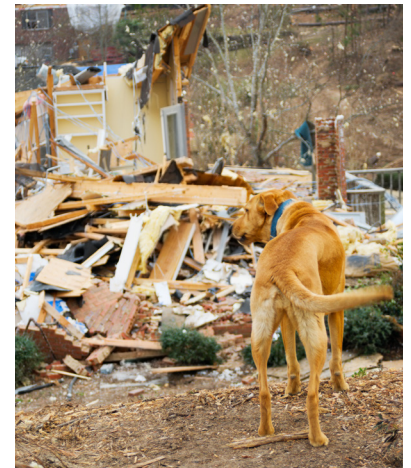
EMERGENCY
MANAGEMENT



Pets in Emergencies

Pets are part of our families. When developing your emergency preparedness kit, include supplies to last 72-hours for your pet such as:

- Food, potable water, bowls, can opener
- Blanket and a small toy
- Leash and/or harness
- Muzzle, if required by local by-laws
- Cat litter and pan
- Plastic bags
- Carrier for transport
- Medications and medical records, including vaccinations
- Copy of licence, if required by local by-laws
- Information about feeding schedules, medications, or behavioural problems if you must board your pet
- Up-to-date ID tag with your name and phone number and the name and phone number of your vet
- Current photograph in case your pet gets lost



***Evacuation centres do not accept pets due to health regulations**

Before an emergency:

- Check with hotels and motels outside your immediate area to see if they would accept pets in an emergency situation.
- Prepare a listing of boarding kennels, veterinarians, and animal shelters that may accept pets during an emergency.
- Check with family and friends living outside your area who may be able to shelter a pet.
- Make arrangements with a trusted neighbour to evacuate your pet, along with the pet's emergency supplies, and meet you at a prearranged location if you are not home during an emergency evacuation.

After an emergency:

- Inspect your home and property, and remove any hazards such as broken metal, glass shards or electrical wires that may cause harm.
- Do not allow your pet to go outside unattended in the days following an emergency, as he/she may become disoriented in a changed landscape.
- Monitor your pet for changes in behaviour. Contact your veterinarian if you have any concerns.