



2011 NHS Bulletin

Labour, Education, and Mobility

This bulletin summarizes data from the 2011 National Household Survey (NHS) regarding labour, education, and mobility in Simcoe County. The NHS reflects a diverse community, with many different skills, cultural influences, and participation rates. In 2011, 65.9% of Simcoe County residents aged 15 years and older were in the labour force. Additionally, 91.6% of the labour force were employed. In terms of post-secondary education, 23.2% of the population aged 15 years and older had college diplomas and/or certificates.



50.0%

of Simcoe County's population aged 15 and older did not have a post-secondary education

90.9%

of Simcoe County's employed population used a car, truck, or van to get to work

91.6%

of the labour force in Simcoe County was employed

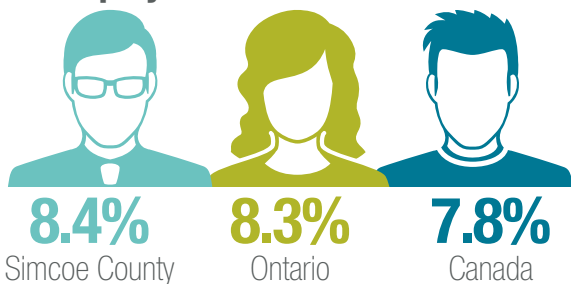
49.4%

of movers to Simcoe County in the last 5 years, moved from another place within Ontario

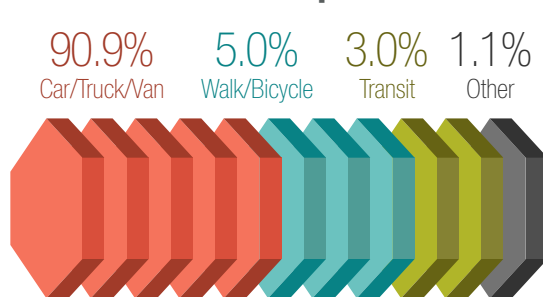
24.5%

of Simcoe County's labour force were employed in Sales and Service occupations

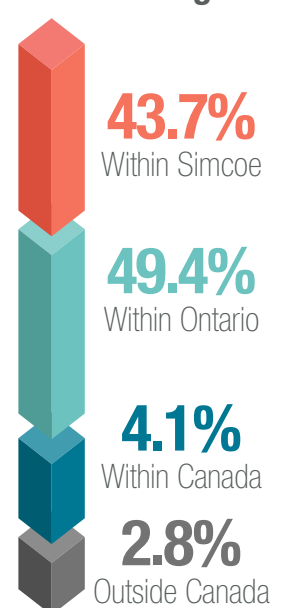
Unemployment Rate of Labour Force



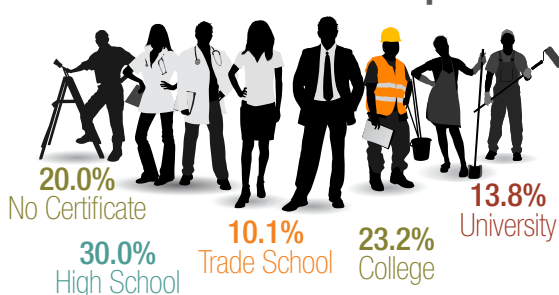
Mode of Transportation



Mobility 5 Years Ago



Level of Education Completed



Top Three Occupations



Summary

In 2011, the highest level of educational attainment by Simcoe County residents aged 15 years and older was a high school diploma at 30.0%, followed by a college diploma with 23.2%. Only 13.8% of residents had attained a university degree, 10.1% a trade school diploma, and 20.0% had never attained any type of certificate. Of those with a post-secondary education, 90.7% obtained it in Canada.

When looking at the labour force, 65.9% of the population of Simcoe County aged of 15 years and older is involved in the labour force, and the other 34.1% was not. Of this 65.9%, 91.6% was employed, and 8.4% was unemployed. The unemployment rate was similar to Ontario's (8.3%), but higher than Canada's (7.8%). The majority of those involved in the labour force drove or got a ride to work (90.9%), while the remaining walked or bicycled (5.0%), took public transit (3.0%), or noted their mode of transportation as other (1.1%). The three largest employment sectors in Simcoe County were Sales/Service occupations (24.5%), Trades/Transport/Equipment Operator occupations (16.5%), and Business/Finance/Administration occupations (14.1%).

The largest group of those who moved within or to Simcoe County between 2006 and 2011 moved from within Ontario (49.4%). People moving from within Simcoe County was the second highest (43.7%). Only 4.1% came from out of province, and 2.8% from outside Canada.

Highest Level of Education (15 Years and Older)		
Level of Education	# of Persons	% of Population
No certificate or diploma	72,495	20.0%
High school diploma or equivalent	108,655	30.0%
Apprenticeship or trades certificate or diploma	36,550	10.1%
College, CEGEP or other non-university certificate or diploma	83,940	23.2%
University certificate, diploma or degree at bachelor level or above	49,960	13.8%

Mobility Status 5 Years Ago		
	# of Movers	% of Movers
Non-Migrant	67,325	43.7%
Intraprovincial migrants	75,990	49.4%
Interprovincial migrants	6,335	4.1%
External migrants	4,325	2.8%
Total	153,975	100.0%

- Figures may not add up due to rounding
- Labour force refers to persons 15 years and older who during the reference period were either employed or unemployed
- Data in this fact sheet was derived from the 2011 National Household Survey (NHS), which replaced the previous long-form census. Unlike the long-form census, the NHS is voluntary. This difference in methodology may affect the comparability between the NHS and long-form Census data

Source: Statistics Canada, 2011 National Household Survey

Population by Labour Force Status (15 Years and Older)			
		% of Population	% of Labour Force
In the labour force	238,465	65.9%	
Employed	218,510	60.4%	91.6%
Unemployed	19,955	5.5%	8.4%
Not in the labour force	123,340	34.1%	

Most Common Fields of Employment (15 Years and Older)		
Occupation Type	# of Persons	% of Labour Force
Sales and service	58,540	24.5%
Trades, transport and equipment operators	39,325	16.5%
Business, finance and administration	33,735	14.1%

Mode of Transportation (15 Years and Older)		
Mode	# of Employed	% of Population
Drive	170,035	84.1%
Passenger	13,795	6.8%
Walk	8,180	4.0%
Public transit	6,120	3.0%
Bicycle	1,840	0.9%
Other methods	2,285	1.1%
Total	202,260	100.0%