



---

To: **Committee of the Whole**

Agenda Section: Corporate Services  
Division: Engineering, Planning and Environment  
Department: Solid Waste Management

Item Number: CCW - 16-301

Meeting Date: September 13, 2016

Subject: Solid Waste Management Infrastructure Projects – Project Update

---

## **Recommendation**

**That Item CCW 16-301, dated September 13, 2016, regarding Solid Waste Management Infrastructure Projects – Project Update, be received.**

## **Executive Summary**

The purpose of this item is to provide:

- an update on work currently being undertaken in preparation for submission of the Planning applications for 2976 Horseshoe Valley Road West, Springwater;
- information on a new representative on the Community Engagement Committee; and
- a revised Frequently Asked Questions (FAQs) document and correspondence received (including County responses).

A comprehensive series of studies (twelve in total) have been undertaken over the summer months, reflective of those mandated by the County/Township of Springwater for Official Plan and Zoning By-law amendments. Of note, this has included an Environmental Impact Study (EIS), Traffic Impact Study (TIS), and Hydrogeological/Geotechnical Study. Final study results are expected to be submitted to the County over the next month in preparation for Planning applications. It is noted in this item that further archeological work has been recommended following the initial archeological assessments. This will not preclude development of the facility on the footprint but is anticipated to delay submission of the Planning applications. County Council will be provided an update as more details are provided by the consultant in the coming weeks.

This item also notes that as development moves forward and these applications are prepared, this new facility will be referred to as the Environmental Resource Recovery Centre.

In addition to Planning-related work, consultation on the OPF project delivery method will be undertaken early this fall via an online presentation and survey. A neighbouring landowner meeting set for September 8 and public drop-in sessions on September 20 will provide access to the County's consultants regarding the project delivery method. A staff report will present received feedback and comments for County Council's consideration and final direction. This will be in preparation for release of the first procurement opportunity related to the OPF, a Request for Information (RFI), set for November.

### **Background/Analysis/Options**

The purpose of this item is to provide an update on the Solid Waste Management infrastructure projects – including details on preparations for Planning applications, the Community Engagement Committee, and correspondence recently received.

Previous staff reports regarding development of these facilities, consultants' technical reports, communication material from public information and consultation sessions, and minutes of Community Engagement Committee meetings can be found at [www.simcoe.ca/opf](http://www.simcoe.ca/opf) and [www.simcoe.ca/mmef](http://www.simcoe.ca/mmef).

### **Preparation for Planning Applications**

As outlined in *Item CCW 16-165 – Solid Waste Management Infrastructure Projects – Development Strategy* (May 24, 2016), amendments to the County Official Plan as well as the Township of Springwater Official Plan and Zoning By-law are required for 2976 Horseshoe Valley Road West, Springwater. Pre-consultation on the required studies for the Planning applications was undertaken with the Township of Springwater on December 21, 2015 and outlined in correspondence received from their Planning staff on January 11, 2016. Further to this, the series of studies commenced this spring in a phased approach, ensuring that site conditions were understood better prior to initiating more detailed Planning/Engineering work. The following key studies were initiated first:

- Environmental Impact Study (EIS)
- Geotechnical/Hydrogeological Study
- Traffic Impact Study (TIS)
- Archeological Assessment/Cultural Heritage Resource Assessment
- Agricultural Impact Assessment/Soil Quality Testing

The remaining studies have subsequently been initiated and are currently being undertaken:

- Functional Servicing Report
- Noise Impact Study
- Odour Impact Assessment
- Site Plan
- Stormwater Management Study
- Hazard Land Assessment
- Planning Justification Report

A preliminary update from the County's consultant indicated that further archeological work has been recommended following the initial Stage 1 and 2 Archeological Assessment. Artifacts within the facility footprint, indicative of an 1830 to 1850 pioneer homestead, have been found. Based on these initial findings, this area will require more detailed study and most likely excavation (a Stage 3 and 4 assessment). This finding will not preclude development of the facility on the footprint but is anticipated to delay submission of the Planning applications. Further discussion on the implications of this additional archeological work on the Planning submissions will be undertaken with County and Township of Springwater Planning staff. County Council will be provided an update as additional details (timeline and additional costs for this work) are provided.

Note that consultation with the Ministry of Municipal Affairs (MMA), the Ministry of Natural Resources and Forestry (MNR), Nottawasaga Valley Conservation Authority (NVCA), and Township of Springwater and County Planning staff has been on-going and will continue as reports are finalized and the Planning applications are furthered.

#### Environmental Resource Recovery Centre

As the facility will house both the OPF and MMF, the Solid Waste Management truck servicing area, and potentially a public education centre, thought has been provided to simplifying reference to this co-located facility. As such, going forward the Planning applications and communication material will reference this new Solid Waste Management facility as the Environmental Resource Recovery Centre. This title is reflective of the County's continued commitment to diversion – viewing our waste as a resource and working diligently to recover divertible materials such as Blue Box recycling and organics.

#### Community Engagement Committee

The Community Engagement Committee (CEC) was formed in 2014, with a mandate to provide a forum for focused discussion on public engagement during the siting and procurement process. The non-voting committee consists of a First Nations representative, three public representatives, and County and local municipal staff. Details on this committee and its mandate are outlined in the Council-approved Terms of Reference, available on the OPF webpage. The Project Team considers the input, feedback, and recommendations of this committee to be a valuable contribution to developing effective engagement.

A position on this committee for a municipal staff representative was recently vacated. Further to this, correspondence was sent to all member municipalities in June with information on the committee and providing an application form for interested staff. Based on discussion with the CEC, it noted that procurement, planning, or communications experience would be an asset given the project's stage of development. The successful applicant was Mr. Robert Brindley, CAO for the Township of Springwater. He will join the committee at the next meeting scheduled for September 6, 2016.

#### Submitted Correspondence

As noted in *Item CCW 16-191 – Solid Waste Management Infrastructure Projects – Public/Stakeholder Engagement Update* (May 24, 2016) comments and questions regarding these projects may be submitted via the project webpages or sent directly to staff and/or members of County Council. In response to recent correspondence received, the Frequently Asked Questions (FAQs) document has been updated (Get the Facts, September 2016) and, for reference, included in this item as Schedule 1. In addition, correspondence sent in response to and the various letters and e-mails received by the Warden has been provided as Schedule 2 (from May 10 to August 26,

2016). This process of recording and presenting correspondence will be maintained as the projects progress.

### Going Forward

As outlined above, review of reports related to the numerous studies and submission of the Planning applications will occur this fall. In addition, consultation will be initiated on the OPF project delivery method as outlined in *Item CCW 16-266 – Organics Processing Facility – Project Delivery Method* (August 9, 2016). An online presentation and survey will be available following a neighbouring landowner meeting set for September 8.

In addition, representatives from GHD Limited and County staff will be available to answer questions specific to the project delivery method (outlined in the presentation and survey) at informal public drop-in sessions on September 20 at the Simcoe County Museum (2 to 4 pm, 6 to 8 pm). Further to the consultation, a staff report will present received feedback and comments for County Council's consideration and final direction. This will be in preparation for release of the first procurement opportunity related to the OPF, a Request for Information (RFI), set for November.

### **Financial and Resource Implications**

To date, approximately \$160,000 and \$125,000 has been spent on development of the Organics Processing Facility and the Materials Management Facility projects, respectively (to end of July 2016). Remaining 2016 expenses relating to project development are estimated to be \$920,000 (\$165,000 allocated to the OPF and \$755,000 allocated to the MMF). These expenses are funded through the Waste Management Reserve.

### **Relationship to Corporate Strategic Plan**

In regard to long-term processing of organics, the Solid Waste Management Strategy (Strategy) recommended development of a centralized composting facility within the County. Public input indicated support for in-County processing as well as for the addition of pet waste and diapers to the program. This item also supports the Strategy recommendation to develop transfer capacity infrastructure to manage garbage and recyclables generated within the County.

### **Reference Documents**

- Item CCW 14-407 (October 30, 2014) Community Engagement Committee
- Item CCW 16-165 (May 24, 2016) Solid Waste Management Infrastructure Projects – Development Strategy
- Item CCW 16-191 (May 24, 2016) Solid Waste Management Infrastructure Projects – Public/Stakeholder Engagement Update
- Item CCW 16-266 (August 9, 2016) – Organics Processing Facility – Project Delivery Method

### **Attachments**

Schedule 1 – Updated Frequently Asked Questions (FAQs) – Get the Facts, September 2016  
Schedule 2 – Correspondence (from May 11 to August 26, 2016)



for CCW 16-301  
Schedule 1.pdf



for CCW 16-301  
Schedule 2.pdf

**Prepared By:** Stephanie Mack, P.Eng., Special Projects Supervisor

**Approvals:**

Rob McCullough, Director, Solid Waste Management  
Debbie Korolnek, P.Eng., General Manager, EPE  
Trevor Wilcox, General Manager, Corporate Performance  
Mark Aitken, Chief Administrative Officer

September 6, 2016  
September 6, 2016  
September 6, 2016  
September 6, 2016



# ENVIRONMENTAL RESOURCE RECOVERY CENTRE

2976 HORSESHOE VALLEY ROAD WEST  
SPRINGWATER

GET THE FACTS

SEPTEMBER 2016



# General Information

## What is the Environmental Resource Recovery Centre?

There are two main facilities to be co-located at the Environmental Resource Recovery Centre – a Materials Management Facility (MMF) and an Organics Processing Facility (OPF).

- **Materials Management Facility (MMF)** – a location for consolidation and transfer of waste (garbage, blue box recycling, and organics) from multiple collection vehicles for more economical shipment to other disposal or processing locations.
- **Organics Processing Facility (OPF)** – a location where green bin material (kitchen waste, soiled paper products, etc.) and potentially materials such as leaf and yard waste, pet waste, diapers, and sanitary products are processed under controlled conditions and converted into other valuable products, such as compost or fertilizer.
- **Other** – additional developments at the Environmental Resource Recovery Centre include a Solid Waste Management truck servicing area, a public education area, and the potential for future expansion to a recycling sorting facility.

## Why is this facility being developed?

Through the 2010 Solid Waste Management Strategy, we listened to residents as Simcoe County spoke strongly about no new landfills. We are now undertaking this process to do the right thing to enhance our diversion programs and improve services for our residents. This facility will offer a solution to securely manage our own waste, control transfer and processing costs, and help to reduce our waste disposal by creating our own processing capacity. It will bring added environmental benefits such as reducing the number of trucks hauling County organics long distances for processing, the ability to add materials to our green bin program, and creation of valuable end products such as compost or fertilizer to support local agricultural initiatives.

## What is a “co-located” facility?

During the siting process, the County’s consultant determined there was the potential both the OPF and MMF could be located on one common site and share infrastructure. This co-located facility, the Environmental Resource Recovery Centre, would include a building with areas for receiving garbage and recycling and truck servicing and, in addition, there would be an on-site area for processing of organics. There would be common administration space, shared scale facilities, and shared storage. As added benefit, this site could also house a Solid Waste Management truck servicing area and a public education area.

## Is this a landfill?

No. Assessing development of the OPF and MMF were recommended in the County’s Solid Waste Management Strategy as a result of County Council’s direction that no new landfills would be developed. This infrastructure will support the County’s diversion initiatives and transfer of wastes for export to processing and disposal locations.

## Will this facility become a landfill?

No. Current direction from County Council on how the County manages garbage is outlined in the 2010 Solid Waste Management Strategy. The Council-approved direction is for export of the County’s garbage – and no development of new landfills.

## Will garbage or recycling be processed or sorted at these facilities?

Garbage and blue box recycling taken to the facility will be transferred from our collection trucks into larger trailers for processing outside of the County. Funding for the MMF is contingent, however, that recycling processing (sorting) could be developed here in the future. This has been considered in the anticipated footprint for the Environmental Resource Recovery Centre. Organics accepted in the County’s green bin program and potentially leaf and yard waste, pet waste, diapers, and sanitary products will be processed into products such as compost or fertilizer.

# General Information cont'd

## Will this facility accept waste from other municipalities?

The Environmental Resource Recovery Centre will be designed to accommodate current County needs and future growth. In the interim, there would be potential capacity to accept some source-separated organics and recycling from other jurisdictions such as the separated cities of Barrie and Orillia. This would offset some of the County's costs.

## What would be the size of this facility?

The footprint of the Environmental Resource Recovery Centre is approximately 11 acres (4.5 hectares). This would include buildings, paved areas around them, and storage. Only a portion of the property, which is 207 acres (84 hectares), will be required for the infrastructure itself, allowing for preservation of the forested areas, appropriate screening, and significant buffer distance from neighbouring residences.

## How many organics processing facilities are there in Ontario?

There are approximately 20 facilities processing municipal source-separated organics in Ontario – including facilities located in Guelph, Peel, Toronto, Hamilton, London, Kingston, and Ottawa.

## Will further studies be made public?

Yes. As with previous consultants' reports for these projects, they will be made public and available at [simcoe.ca/opf](http://simcoe.ca/opf) and [simcoe.ca/mmf](http://simcoe.ca/mmf).

## Will there be future meetings for the public regarding the facility?

Yes. Consultation is an important component of this project. As we move forward, we are planning for public consultation/information sessions at key milestones. Upcoming will be opportunity for discussion on procurement of organics processing technology and meetings related to planning approvals.

## Where are we in the process? What's next?

The siting process was completed in March 2016 with direction provided by County Council to develop a co-located facility at 2976 Horseshoe Valley Road West, Springwater. The project will now move forward with site-specific studies, approvals, procurement, and construction and commissioning. Upcoming milestones include:

- completion of studies to confirm site conditions (early fall 2016)
- consultation on the OPF project delivery method (early fall 2016)
- submission of Planning applications (early fall 2016)
- Request for Information for organics processing



# Siting Process

## How was the preferred location determined?

The siting process was developed by industry-leading experts and included the evaluation of 502 potential sites through a three-screen process, applying more than 20 environmental and technical criteria (such as the avoidance of wetlands and floodplains, vulnerable areas under Source Protection, Prime Agricultural Areas, and sensitive receptors). County landfill properties and willing vendor industrial-zoned sites were included in the scope of properties reviewed in the site selection process. A short list of seven sites was presented for public, Aboriginal, and stakeholder consultation in fall 2015, followed by a detailed comparative evaluation completed by the County's consultant. Following this exhaustive siting and consultation period, furthering development of a co-located OPF and MMF at 2976 Horseshoe Valley Road West, Springwater, was approved by County Council. This location has many noted advantages, including favourable environmental conditions.

## Was the siting criteria weighted?

No. No single criteria influenced the rankings more than another. The 502 candidate sites had to satisfy Screen 1 criteria – that is, they had to meet certain environmental and technical criteria to be further evaluated as viable to host the facilities (this included site size and groundwater conditions). In the second step, a series of Screen 2 criteria was used to evaluate which sites offered the most favourable conditions, with these sites becoming the short-listed sites. Finally, each short-listed site was evaluated thoroughly and the net effects of constructing the facilities at each location determined. The short-listed sites were then compared against each other, with the preferred site offering the most advantages.

## Was waste generation considered?

Yes. Waste generation was a consideration in the siting process for the MMF, a location where waste from multiple collection vehicles will be consolidated. The search area encompassed lands within Springwater, Oro-Medonte, Innisfil, Essa, and Clearview and was based on the centre of waste generation in the County. This area considers not only the number of households throughout the County (where garbage is generated) but minimization of travel distance. Transportation efficiencies are important for the MMF as curbside collection vehicles must collect waste throughout the County but be able to return to the transfer location and discharge in a timely manner at the end of the day.

## Was agricultural land a consideration in the evaluation?

Yes. Avoidance of Prime Agricultural Areas (lands where Specialty Crop Areas and Class 1, 2, and 3 soils dominate) was a consideration in Screen 1. Prime Agricultural Lands are designated in local and County Official Plans. Of the 502 candidate sites evaluated, 71 were excluded due to their location within Prime Agricultural Areas or high quality soils.

## Why did candidate sites have to be so large? Will the facility take up this much space?

Site size was considered as part of the technical siting criteria. For a co-located facility, the minimum site size was 17 ha (42 acres) – although the actual footprint would be a portion of this, approximately 4.5 ha (11 acres). The difference between the two provides what is known as a buffer – the distance between the facility and surrounding land uses. It is common practice when siting this type of facility to provide a buffer area. It is used in combination with good design and operational practices to mitigate potential impacts such as odour and noise. Generally, the greater the distance to sensitive receptors, the greater potential to reduce conflicts between the site and neighbours.

Minimum property size, including buffer distances, was recommended by the County's consultant, utilizing their expertise and applying best practices. This was exclusionary criteria and did not change during the evaluation or with surrounding land use.

# Siting Process cont'd

## Were only County forests considered as potential sites?

No. The list of 502 candidate sites included open and closed County landfills and willing vendor properties identified through a search of the Multiple Listing Service (MLS) of the Canadian Real Estate Association and through a Request for Expression of Interest (RFEI).

## Why wasn't a County landfill site selected as the preferred site?

All County open and closed landfills were considered as potential sites, with 53 related properties evaluated. Using the first set of evaluation criteria, 32 did not meet the minimum property size requirements, 15 were not carried forward since they were in sensitive groundwater areas, two were excluded for wetlands, and one for Prime Agricultural Land with additional access issues. The three remaining sites were further evaluated, with only the Clearview site being carried forward to the short list as a potential site. In the Screen 3 evaluation, the Clearview site was evaluated for the OPF and ranked third. This site is not a landfill and comprises Prime Agricultural Land, which is actively farmed. Therefore, it offered no advantage for brownfield redevelopment.

## Is an Environmental Assessment required?

No. However, from the outset, these projects have been approached with an understanding of the sensitive nature of siting waste management facilities. Although an EA is not required, the County has developed these projects with this framework in mind, which has included undertaking a comprehensive siting and consultation process.

Under the Ontario Environmental Assessment Act, an EA is required if more than 1,000 tonnes per day of residual waste is transferred from the site for final disposal. This is based on the design capacity of the facility. With anticipated growth over a 30-year design period, it is estimated the County will manage approximately 435 tonnes/day of waste for final disposal (for a combined facility in 2048). This is well below the 1,000 tonnes/day trigger outlined in the Act. Furthermore, these projections do not take into account any further increases in diversion (from the addition of pet waste and diapers, for example), which would actually lower the projected tonnes of waste for final disposal.

## Was Greenlands mapping considered?

Yes. Consideration of the Greenlands and, in addition, many of the features and functions that make up the Greenlands designation (notably significant wetlands, Species at Risk, and Areas of Natural and Scientific Interest (ANSIs)) were considered during the siting process. It was not considered exclusionary, however, as development on Greenlands is not precluded. It requires additional consultation and a scoped Environmental Impact Statement (EIS). As part of the EIS, development of the property must demonstrate no negative impact to site natural heritage features and ecological function.

## Why were there no industrial sites on the short list?

County landfill properties and willing vendor industrial-zoned sites were included in the scope of properties reviewed in the site selection process. Many of these sites were excluded in Screen 1 based on their size, distance from the centre of waste generation, and groundwater conditions. Land use and zoning was a consideration in Screens 2 and 3 – along with several other environmental, technical, and social criteria. This criteria was not exclusionary but rather used to assess whether a site offered an advantage in this regard.

One of the short-listed sites (located at 540/528 Penetanguishene Road, Springwater), had areas zoned General Industrial/Outside Storage (MO). This was considered in the final comparative evaluation.

# Siting Process cont'd

## **Was groundwater considered when selecting the preferred site?**

Yes. Source Protection mapping was used to determine which candidate sites were in a Wellhead Protection Area (WHPA), Highly Vulnerable Aquifer (HVA), or had medium to high vulnerability Significant Recharge Areas (SGRAs). This important exclusionary criteria was used to remove sites from further evaluation. Of the 502 candidate sites evaluated, 184 were excluded in consideration of groundwater. In Screen 3, groundwater considerations such as depth, flow, and direction were further used to evaluate the short list of sites. The preferred location has favourable groundwater conditions. Placement and design of the facility will now consider site-specific groundwater conditions to be confirmed with further studies.

## Site Design, Technology, Operations

### **What provincial approvals are required for operation of these facilities?**

Both the OPF and MMF are regulated under the Environmental Protection Act and will require an Environmental Compliance Approval (ECA) issued by the Ministry of the Environment and Climate Change (MOECC). An ECA is overseen and enforced by the province and will cover waste operations, air and noise, and surface water and groundwater monitoring and control at the facility. It will govern how the facility will be operated and monitored with respect to preventing offsite impacts. The approvals process will require submission of environmental and technical reports and assurances that public, Aboriginal, and stakeholder consultation has been undertaken.

### **When will this facility be operational?**

The approved Development Strategy for the Environmental Resource Recovery Centre outlines staged construction of the MMF and OPF. The MMF will be commissioned first in 2019, the OPF will follow in 2021.

### **What will be the operating days/hours?**

Operating hours will be outlined in the ECA. It is anticipated the facility will operate six days per week (Monday thru Saturday) from 6 a.m. to 7 p.m., generally. Collection vehicles will generally utilize the MMF Monday thru Friday and offload when routes are completed (currently average between 2 and 6 p.m.). County-owned trucks, managing divertible material collected at drop-off facilities, would leave the facility around 6:30 a.m. and generally return by 4:30 p.m. Garbage and recycling would be sent outbound for processing during working hours Monday thru Saturday.

### **Will technology selection consider the ability to control odours?**

Yes. This will be an important consideration during the evaluation of different technologies. Modern facilities utilizing aerobic composting or anaerobic digestion are designed to contain and mitigate odours. Any technology will be expected to meet MOECC regulations for odour.

### **Will nearby neighbours be impacted by odours?**

It will be the responsibility of the County to ensure that neighbours are not impacted by odours. Controlling offsite odours will be a significant operational requirement of the facility and site design and technology must ensure specified odour limits are met. This was a consideration during the siting process and the preferred location offers large separation distances, with no residences within 500 m of the proposed footprint. Modern odour control measures will also be incorporated into design of the buildings and material will be accepted in enclosed buildings under negative air pressure, utilizing fast-action doors.

# Site Design, Technology, Operations cont'd

## **What will be the end product? Will it be available for local agricultural initiatives?**

One of the benefits of developing the OPF in the County will be producing compost or fertilizer from our green bin organics to support local markets (inclusive of agriculture). In addition and depending on processing technology, an end product may be renewable energy in the form of green electricity or natural gas, or potentially vehicle fuel.

## **When will the processing method/technology be selected for the OPF?**

Technology selection will be a three-part procurement process. It will begin with a Request for Information in late 2016. A Request for Pre-qualification and Request for Proposal for organics processing technology will be released following receipt of the planning approvals, anticipated in 2017.

## **Will the garbage trucks themselves cause odour impacts to the neighbours?**

Garbage trucks currently travel every serviced street in the County. The County has not received odour complaints regarding these trucks.

## **Will nearby neighbours be impacted by noise from the facility?**

The ECA will contain operating conditions pertaining to noise and hours of operation for the facility. As mitigation, the preferred site is large and offers good buffer distances, with no residences within 500 m of the proposed footprint. Best Management Practices (BMPs) related to noise will be implemented such as conducting site operations inside enclosed buildings, where reasonable.

## **Will nearby neighbours be able to see the facility?**

Visual screening of the facility was considered in the evaluation of the short-listed sites. It was noted the preferred site has limited potential visual effects as the site is quite large, well-screened by existing vegetation, and has favourable topography. The ideal location for the facility in consideration of setbacks and environmental features will allow for the footprint to be set back from neighbouring properties and Horseshoe Valley Road West.

## **Will there be any impacts to soils or surrounding agricultural land?**

Operations conducted at this facility do not involve landfilling. Garbage and recycling brought to the MMF will be transferred from an enclosed building and hauled to other processing or disposal facilities. Processing of source-separated organics at the OPF will be conducted in an environmentally responsible manner, adhering to all MOECC regulations and guidelines. Mitigation measures such as conducting operations under cover, containing process water, and environmental monitoring of groundwater and surface water will be undertaken.

## **What is the facility's water requirements?**

For the MMF, very little water usage is expected other than for cleaning activities. For the OPF, some water may be required (dependent on technology) but food waste is already high in water content. It is anticipated water requirements will be below what would require a Permit to Take Water (50 m<sup>3</sup>/day) from the MOECC.

## **How will water be managed on-site?**

Management of water, such as process water, sewage generated on-site, and truck washing water, will be considered and planned for in the design of the facility. It will be the responsibility of the County to meet all requirements outlined by the MOECC in the ECA.

## **How will air quality be monitored?**

Controlling emissions from the facility, including odours and dust, will be a significant operational requirement of the facility. It will be the responsibility of the County to meet all requirements outlined by the MOECC in the ECA, including any annual monitoring and reporting requirements. This will include rigorous continuous monitoring of the odour abatement systems to ensure they are operating effectively.



# Financial Considerations

## Who will own/operate the MMF and OPF?

Although both the MMF and OPF will manage waste at the Environmental Resource Recovery Centre, they will be operated separately as organics processing involves specialized equipment. The MMF is quite simply a building for temporary storage and consolidation of garbage and recycling.

- The MMF will be a design-bid-build, that is, the County will retain an engineering firm to develop a detailed design and specifications for a tender process. A contractor will be selected and retained to construct the facility, which the County will own and operate/maintain following commissioning.
- The County's consultant has recommended the OPF be a design-build-operate, that is, the County would own the facility but contract a single entity to design, construct, and operate/maintain it. Consultation on this will be undertaken in early 2016, with direction provided by County Council to follow.

## What are the anticipated costs for the facility

Although actual costs of the MMF will be determined through the procurement process, it is estimated the capital cost of the MMF will be \$4.7 million. This considers \$1.15 million in significant funding secured from the Continuous Improvement Fund (CIF). Estimated capital costs to develop the OPF could range from \$10 to \$35 million or higher, dependent on selected technology. Accurate costs, however, will only be determined through site-specific design and the procurement process.

## Was a business case completed for the MMF?

Yes. In 2014, County Council was presented with a financial analysis in regard to development of transfer infrastructure. Given the basic function of the MMF and the County's experience in developing other similar infrastructure projects, estimated costs (not site-specific) have already been determined for this facility. Based on this initial analysis, the payback period for a County facility was estimated to be approximately 5.5 years (with funding).

## Will costs of the MMF be updated now that the siting is complete?

Yes. Following site-specific studies and procurement of an engineering firm to further work on design and specifications, costing for the facility will be refined and presented to County Council. This is anticipated for 2017.

## When will the business case be developed for the OPF? Why has it not been undertaken?

A viability assessment for the OPF was undertaken in 2012. It concluded that given the County's tonnages, development of a facility would be a viable option. As technology for processing organics varies widely, site-specific costs to develop a facility at 2976 Horseshoe Valley Road West will now be determined through a procurement process. This process will allow vendors to submit proposals with detailed costing once site conditions are known. To begin this process, a Request for Information will be undertaken this fall with a preliminary business case presented in early 2017. Following the results of a Request for Proposal, a final business base will be presented in 2018 for County Council's consideration and direction.

## How were the savings calculated for the MMF?

The analysis compared the current system of contracting transfer services against costs associated with development of a County facility. It considered changes in tonnages from growth, consideration of increased export of garbage with closure of County landfills, capital costs of the building and equipment, and estimated annual operating expenses.

# Financial Considerations cont'd

## What will the OPF business case consider?

The OPF business case will compare the current system of contracting services against costs associated with development of a County facility. It will consider changes in tonnages from growth and potential increases in diversion, capital costs of the building and equipment, and estimated annual operating expenses. In addition, it will provide consideration to the social and environmental aspects of the project.

## Will neighbours of the site be compensated?

Compensation will be considered once impacts of developing the facility at 2976 Horseshoe Valley Road West are fully understood. The process to determine need for compensation will begin with finalizing the site layout and design (including selection of organics processing technology) and determining how both the transfer and organics processing facilities will operate on a daily basis.

# Planning

## What planning approvals are required?

Development of the Environmental Resource Recovery Centre will require amendments to the County Official Plan as well as the Township of Springwater Official Plan and zoning by-law.

## What studies will be undertaken as part of the planning process?

The following studies are required for the planning applications:

- Planning Justification Report
- Agricultural Impact Assessment
- Soil Quality Test
- Traffic Impact Study
- Environmental Impact Study
- Hydrogeological Study
- Archeological Study
- Noise Assessment
- Odour Impact Assessment
- Site Plan Design
- Stormwater Management Report
- Functional Servicing Report
- Hazard Land Assessment

## What will an Environmental Impact Study (EIS) include?

The EIS will examine natural features of the property (including soils, vegetation, wildlife, topography, watercourses/ bodies) and the ecological functions they provide. It will include a description of potential impacts of the development and how the environmental characteristics and features will be maintained. This work will be done in consultation with the Ministry of Natural Resources and Forestry (MNRF), Nottawasaga Conservation Authority (NVCA), and the Township of Springwater. This study will guide where development can occur on the site and inform the land use planning applications.

## Who will conduct the EIS? Will it be made public?

The EIS will be conducted by a qualified consultant (with expertise in species identification, biological, ecological and/or environmental functions). The final report will be included in the planning submission and become public information.

# Planning cont'd

## **Will the impact on wildlife be studied?**

Yes. The EIS currently being conducted will identify potential impacts to wildlife and fish habitat. As part of the EIS, development of the property must demonstrate no negative impact to site natural heritage features and ecological function. The siting evaluation considered effects of facility development on species of special concern, threatened, and endangered (including aquatic species). A preliminary review of historical records indicated low net effects on Species at Risk (SAR) for 2976 Horseshoe Valley Road West. This was further confirmed with a preliminary assessment of natural heritage features, undertaken in early 2016.

## **Will an Archaeological Assessment be undertaken?**

Yes. An Archaeological Assessment is currently being conducted as part of the suite of studies required for the Planning applications.

## **Will the Archaeological Assessment consider the cemetery neighbouring the property?**

Yes. Although the footprint of the facility will not be located in this area, a Cultural Heritage Resource Assessment is being conducted in conjunction with the Archeological Assessment.

## **Will the entire site be zoned for this type of facility? What is the plan for that additional land?**

No. The total 207 acres will not be rezoned. While only the land required for the facility and reasonable space for expansion (a potential future recycling sorting facility, for example) will be rezoned, this amount of land is unknown until technical studies are completed. Further discussions on this will be required with County Planning staff and the Township of Springwater after the technical studies have been completed. Factors that may influence how the property is rezoned (and how much is zoned for this purpose) may include findings in the Environmental Impact Study, preservation of space for recreational activities, and discussions with neighbouring landowners.

## **What will this site be designated in the County's Official Plan?**

We will be working with Provincial and County Planning staff to determine how this facility will be designated in our Official Plan. The County's approach to waste management has evolved away from traditional landfilling of all waste. As our efforts are now focused on diversion, designation of lands with infrastructure where there is no waste disposed, such as the Environmental Resource Recovery Centre, will be further considered with the application for planning approvals. A site-specific Official Plan designation will be applied to the site to reflect the non-landfill nature of the

# Transportation

## Was transportation considered in the siting evaluation?

Yes. The siting evaluation considered neighbourhood traffic impacts, existing and required infrastructure, and capital costs associated with infrastructure improvements. The preferred location offered numerous advantages in regard to transportation – centrally located on Horseshoe Valley Road (County Road 22) with excellent access to Highways 400, 27, 26, and 11.

## What will be the impact of the additional traffic to this area?

The impact of additional traffic will be analysed in a complete Traffic Impact Study (TIS) currently being undertaken by a qualified transportation consultant. This study will examine data related to peak periods – both for site-generated traffic and for this portion of Horseshoe Valley Road West.

## Will the TIS be made public?

The report will be presented to County Council and become public information. It will support both County and Township of Springwater Planning applications.

## Are road alterations needed to accommodate traffic turning in and out of the site?

The siting evaluation noted the hill west of the access point off of Horseshoe Valley Road West may have some impact on sight lines and necessitate road upgrades. The TIS will determine what improvements will be necessary (such as climbing, turning, and acceleration/deceleration lanes). County staff have visited the area and preliminary assessment indicates these improvements are feasible.

## What is a Traffic Impact Study (TIS)?

The purpose of a Traffic Impact Study (TIS) is to examine the impact of traffic generated by the proposed development at its access, nearby intersections and interchanges, and to determine any necessary highway design improvements required.

## What will the TIS determine?

The TIS will evaluate the safe and efficient access and traffic flow around the facility, determine required upgrades to Horseshoe Valley Road West, and the best location for access to the facility.

## How many vehicles would be going to this facility daily?

Initial estimates indicate that 87 vehicles would utilize the facility for County requirements in 2018 with a maximum of 210 vehicles over the design life of the facility.

## Will vehicles access the facility from Horseshoe Valley Road or Rainbow Valley Road?

The main access to the facility will be from Horseshoe Valley Road, with the potential for emergency access via Rainbow Valley Road.

# Forestry

## What is the history of the Freele Tract?

This property was purchased in 1948 with the majority of tree planting completed in 1949. As a working forest, plantations within this tract have been thinned several times in the past, and are scheduled to be assessed in 2017 for harvesting as part of regular forestry management.



# Forestry cont'd

## **If only five hectares is required for this facility, what will happen to the rest of the tract?**

The facility footprint is anticipated to be 11 acres (4.5 hectares) of the 207 acre (84 hectares) location (approximately 5%), allowing for continued forest management activities and use of the forest for recreational purposes.

### **Will a snowmobile trail remain?**

Yes. It is anticipated the facility design will allow for continued use of the forest for recreational purposes for the majority of the property.

### **What will the County do to mitigate the impact on the forest?**

Preserving forested areas is important as they will act as visual screening for the neighbouring landowners. Only a small portion of this large property will be required for the footprint of the facility (11 acres/4.5 hectares out of 207 acres/84 hectares).

### **What is a working forest?**

The County Forest is economically self-sustaining and operates without the use of tax-dollars. As a 'working forest', approximately 1,200 to 1,500 acres are thinned annually to maintain forest health, improve future timber values, and achieve other objectives. All revenue from the sustainable management of the Forest is directed back into management activities and the strategic acquisition of additional lands. The Simcoe County Forest is wholly owned by the County of Simcoe; it is not Crown land.

## **How many acres of forest does the County currently manage?**

At more than 32,600 acres and still growing, the Simcoe County Forest is the largest municipally-owned forest in Ontario and among the largest of its kind in Canada with more than 150 properties ranging in size from 13 to more than 3,500 acres. Simcoe County is one of the few municipalities in Ontario that continue to invest in additional lands to ensure the substantial environmental, social and economic benefits continue into the future. Within the past decade, the County Forest has expanded by more than 3,600 acres; in 2015 alone, a further 436 acres has been added in Springwater, Oro-Medonte and Clearview Townships.



## **Where can I find more information?**

Additional information, including upcoming milestones, information materials, and related staff reports, can be found at [simcoe.ca/opf](http://simcoe.ca/opf) and [simcoe.ca/mmfs](http://simcoe.ca/mmfs).

Feedback or questions can be submitted directly via these pages or by calling Customer Service at **1-800-263-3199**



**County of Simcoe  
Solid Waste Management**  
1110 Highway 26,  
Midhurst, Ontario L0L 1X0

Main Line (705) 726-9300  
Toll Free 1-866-893-9300  
Fax (705) 726-9832  
simcoe.ca



June 24, 2016

Mr. John Spencer  
5 Pine Hill Drive, RR1  
Phelpston, Ontario  
L0L 2K0

**RE: County of Simcoe – Solid Waste Management Infrastructure Projects  
2976 Horseshoe Valley Road West, Springwater**

Dear Mr. Spencer:

We wish to acknowledge receipt of your correspondence (dated May 26, 2016, addressed to Warden Gerry Marshall) in regard to two County of Simcoe Solid Waste Management infrastructure projects – an Organics Processing Facility (OPF) and Materials Management Facility (MMF) – currently proposed for development at 2976 Horseshoe Valley Road West, Springwater. As a near neighbour to these proposed facilities, we understand that you have questions regarding the upcoming studies which are being undertaken to support this development. Further to discussion at the meeting held on March 23, 2016 for landowners within 500 m of the property and the Public Information Sessions held on April 19, 2016, the Warden has forwarded your correspondence for staff to provide some clarification and additional details on the Environmental Impact Study (EIS) currently being undertaken.

This infrastructure, recommended in our Solid Waste Management Strategy, reflects the County of Simcoe's commitment to diversion, reducing garbage, and securely managing our own transfer and processing capacity. The OPF will provide a location where organics (green bin material, potentially materials such as leaf and yard waste, pet waste, and diapers) are processed and converted into other valuable products, such as compost or fertilizer. The MMF will provide a location for consolidation and transfer of waste and recycling from multiple collection vehicles for more economical shipment to other disposal or processing locations. An alternative to developing new landfills within our borders, these facilities will offer benefits such as reducing greenhouse gas emissions by shortening haulage distances to processing and will provide a local, long-term solution to responsibly manage our own waste and divertible material at one common location.

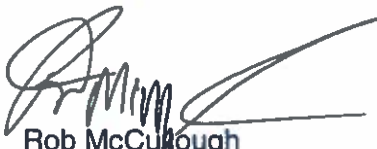
It is important to note that although an Environmental Assessment (EA) is not required by the Ministry of Environment and Climate Change (MOECC) for either the OPF or MMF, the County has developed these projects with this framework in mind, understanding the sensitive nature of siting waste management facilities. This has included undertaking an extensive siting process and ongoing, comprehensive consultation. The siting process was developed by Ontario industry-leading experts and included the evaluation of 502 potential sites through a three-screen process, applying over twenty environmental (such as the avoidance of wetlands and floodplains, vulnerable areas under Source Protection, prime agricultural areas, and sensitive receptors) and technical criteria. County landfill properties and willing vendor industrial zoned sites were included in the scope of properties reviewed in the site selection process. This process did not short list any of these sites, with the exception of the property on Highway 93, due to one or a combination of the screening criteria (e.g. size, environmental features such as sensitive groundwater areas, proximity to sensitive receptors).

A short list of seven sites was presented for public, Aboriginal, and stakeholder consultation in fall 2015, followed by a detailed comparative evaluation completed by the County's consultant. Following an exhaustive siting and consultation period, furthering development of a co-located OPF and MMF at 2976 Horseshoe Valley Road West, Springwater, was approved by County Council. This location has many noted advantages, including favourable environmental conditions.

This property will require amendments to both the County Official Plan as well as the Township of Springwater Official Plan and Zoning By-law. Additional studies are being undertaken to confirm site conditions. These will be submitted with the Planning applications. As you noted in your letter, the County's consultant, GHD Limited, conducted on-site work in January 2016 to preliminarily assess natural heritage features at the preferred location. This initial assessment did not identify any conditions that would preclude development of the facilities. However, additional site investigations, involving spring and summer fieldwork, are required to further determine natural features of the site. This is currently being undertaken. These will form the basis of the Environmental Impact Study (EIS), which will outline natural features of the property (including soils, vegetation, wildlife, topography, watercourses/bodies) and the ecological functions they provide. The EIS will review how development of the property may occur with no negative impact to site natural heritage features and their ecological functions.

Be assured that the studies required for the Planning applications, such as the EIS, will be done in consultation with and fulfill requirements set forth by local municipalities, the conservation authority, and the Province. They will provide additional information and justification for development of the OPF and MMF at 2976 Horseshoe Valley Road West, Springwater, and ensure compliance with local and provincial policies. Please note that on-going consultation, seen as imperative to the success of this project, will continue throughout project development. Also, as has been offered from the outset of this project, staff are available to meet individually with landowners to discuss more specific concerns and questions you may have.

Regards,



Rob McCullough  
Director, Solid Waste Management

cc. Gerry Marshall, Warden, County of Simcoe  
Terry Dowdall, Deputy Warden, County of Simcoe  
Bill French, County Councillor  
Don Allen, County Councillor  
Honourable Glen R. Murray, Minister of the Environment and Climate Change  
Patrick Brown, MPP (Simcoe North)  
Jim Wilson, MPP (Simcoe-Grey)  
Mayor Jeff Lehman, City of Barrie  
Mayor Steve Clarke, City of Orillia  
Mark Aitken, CAO, County of Simcoe  
Debbie Korolnek, General Manager, Engineering, Planning & Environment, County of Simcoe

From: John Spencer [REDACTED]  
Sent: Thursday, May 26, 2016 12:45 PM  
To: Warden  
Cc: premier@ontario.ca; pm@pm.gc.ca; patrick.brownco@pc.ola.org; ahoggarth.mpp.co@liberal.ola.org; jim.wilson@pc.ola.org; officeofthemayor@barrie.ca; mayor@orillia.ca; ec.ministre-minister.ec@canada.ca; Elizabeth.May@parl.gc.ca; Thomas.Mulcair@parl.gc.ca; bmauro.mpp.co@liberal.ola.org; gmurray.mpp.co@liberal.ola.org; todd.simith@pc.ola.org; lisa.thompson@pc.ola.org; Allen, Don; French, Bill  
Subject: Simcoe County Organic Processing and Material Management Facility

Warden Gerry Marshall,

It's my understanding that Simcoe County is in the process of commencing environmental impact studies for the proposed site of the Organic Processing and Material Management Facilities located in a tract of County Forest alongside Horseshoe Valley Road in Simcoe County, Ontario. I have a question that I would like to pose related to this.

However, for the benefit of the people copied on this email that aren't familiar with this initiative I'd like to provide a brief background to put my question in a contextual framework.

#### BACKGROUND

Simcoe County's official website states: "It is everyone's responsibility to protect the forests of Simcoe County so that in years to come there will still be places to experience the natural beauty and the wondrous sounds and silence of a forest."

However, unbelievable as it may seem, at the outset of the site selection process for the proposed organic processing and material management facilities, when they had a chance to "protect the forests of Simcoe County", Simcoe County Council did not to exclude the forests of Simcoe County from their site selection criteria. In fact, Council approved the very site selection criteria that resulted in an astonishing and disappointing 5 out of 7 of the short-listed sites being pristine tracts of County Forest! And, the preferred site ended up being right alongside the beautiful Horseshoe Valley Road... a gateway for visitors to the County for skiing and recreation etc.

Many residents of Simcoe County are in shock and understandably outraged by this pending travesty that will have such a devastating impact on our wondrous forest.

Elected officials and staff have consistently tried (through brochures, public meetings, and the media etc.) to influence the public perception of this industrial use of our forest by indicating that the County would only be using a tiny percentage and small footprint of the overall County forest. For example, in a Barrie Examiner newspaper article on April 20, 2016, the County's Forester stated ... "We're talking about 11 acres of that 207 acres, and even that

207 acres is a very small piece of what constitutes the County forests"

Gerry Marshall (Warden of Simcoe County and Mayor of Penetanguishine) stated in the same newspaper article... "We think we have the right site, the best site in the County of Simcoe."

This is how they have chosen to portray to the public the insignificance of this tract of County Forest. In my opinion, this would be akin to Premier Wynne saying the Provincial Govt. has decided to put a waste processing factory inside Algonquin Park's 2 million acres and justifying it by saying it would be insignificant because it would only take up an extremely small footprint in the forest. Would the citizens of Ontario not also be outraged at such a suggestion... no matter how small the footprint?

I respectfully suggest that turning a forest into an industrial zone is the wrong thing to do.

#### MY QUESTION

I would like to pose a question related to the environmental impact on the forest for this proposed initiative and ask for a formal answer.

In a Memorandum dated February 26 to the Committee of the Whole the consulting firm GHD Limited (retained by the County) reported on the findings of their Ecologist who conducted a site visit to the Horseshoe Valley site to “verify site conditions and document natural heritage features of the property.” The findings were as follows:

“The entire site is treed with some areas of natural trees, although the majority of the site is mixed-species plantation. The topography is undulating with a global slope from west to east across the central and southern portion of the site. Plantation species include red pine (*Pinus resinosa*), Norway spruce (*Picea abies*), and European larch (*Larix decidua*). Tree species in the naturalized areas on site include black locust (*Robinia pseudoacacia*), ash (*Fraxinus* spp.), Black cherry (*Prunus serotina*), American beech (*Fagus grandifolia*).”

“Based on the size and attributes of the forested area on and adjacent to the property, the characteristics of this forest comply with the criteria of the draft 2012 OP (Official Plan – Simcoe County) SIGNIFICANT WOODLAND definition, and therefore under the County Greenlands designation.” End of quote.

Further to this “significant woodland” designation the Official Plan of the County of Simcoe (modified on January 22, 2013) states under the heading of NATURAL HERITAGE the following:

“ii. Development and site alteration SHALL NOT BE PERMITTED in the following unless it has been demonstrated that there will be no negative impacts on the natural features or their ecological functions:

- Significant woodlands south of the Canadian Shield”

It seems to me that this clause is inserted to ensure compliance with Ontario Provincial policy as follows:

“The Provincial Policy Statement (PPS, [MMAH, 2014]) outlines policies related to natural heritage features and water resources. The Planning Act requires that planning decisions shall be consistent with the PPS.

According to the PPS, development and SITE ALTERATION SHALL NOT BE PERMITTED IN:

- Significant wetlands (in coastal areas or in Ecoregions 5E, 6E and 7E);
- Significant coastal wetlands; and

Unless it has been demonstrated that there will be no negative impacts on the natural features or their ecological functions, development and site alteration shall not be permitted in SIGNIFICANT WOODLANDS (south and east of the Canadian Shield)”

My question is as follows:

Given that development of the preferred site (e.g. clearing land, construction of buildings and bulldozing a roadway to accommodate transport and garbage trucks) would seem to involve impacting some “natural features”, how would this development and site alteration have “no negative impacts on the natural features or their ecological functions”? Would this not contravene the Provincial policy? And, if so, why does the County not suspend further work associated with this forest site and instead focus on implementing the planned facility in one of the numerous industrial sites that are in the County that would be more suited to this initiative?

It's time to “do the right thing” and not put this facility and factory in our beautiful forest.

I would appreciate a response to my question and respectfully ask that you “reply all” so that others who are copied on this email can see your answer.

Thank you in advance ...

Sincerely

John Spencer  
Simcoe County Resident and Constituent





County of Simcoe  
Solid Waste Management  
1110 Highway 26,  
Midhurst, Ontario L0L 1X0

Main Line (705) 726-9300  
Toll Free 1-866-893-9300  
Fax (705) 726-9832  
simcoe.ca



July 13, 2016

Mr. John Spencer  
5 Pine Hill Drive, RR1  
Phelpston, Ontario  
L0L 2K0

**RE: County of Simcoe – Solid Waste Management Infrastructure Projects  
2976 Horseshoe Valley Road West, Springwater**

Dear Mr. Spencer:

We wish to acknowledge receipt of your correspondence (dated June 28, 2016, addressed to Warden Gerry Marshall) in regard to two County of Simcoe Solid Waste Management infrastructure projects – an Organics Processing Facility (OPF) and Materials Management Facility (MMF) – currently proposed for development at 2976 Horseshoe Valley Road West, Springwater. Further to my letter dated June 24, 2016, the Warden has forwarded your correspondence for staff to provide some additional clarification.

In regard to your question regarding natural heritage features and the significant woodland definition, we wish to reiterate that the purpose of studies currently being undertaken is to ensure that development of the OPF and MMF at this location is in compliance with municipal and provincial policy. Specifically, and as required by Planning policy, the Environmental Impact Study will assess the significance of the forest on the property in consultation with the appropriate agencies/authorities. It will review how development of the property may occur with no negative impact to site natural heritage features and their ecological functions. The results of this study will be presented to County Council as we continue the development process.

For information, we will be organizing a meeting with neighbouring landowners in early September to further the consultation process in regard to organics processing technology. In addition, we will provide an update on the studies that have been undertaken.

Regards,

A handwritten signature in black ink, appearing to read "Rob McCullough".

Rob McCullough  
Director, Solid Waste Management

cc. Gerry Marshall, Warden, County of Simcoe  
Terry Dowdall, Deputy Warden, County of Simcoe  
Bill French, County Councillor  
Don Allen, County Councillor  
Mark Aitken, CAO, County of Simcoe  
Debbie Korolnek, General Manager, Engineering, Planning & Environment, County of Simcoe

From: John Spencer [mailto:[REDACTED]]  
Sent: Tuesday, June 28, 2016 6:36 AM  
To: Warden <Warden@simcoe.ca>  
Cc: premier@ontario.ca; pm@pm.gc.ca; ahoggarth.mpp.co@liberal.ola.org; McCullough, Rob <Rob.McCullough@simcoe.ca>; Marshall, Gerry W. <Gerry.Marshall@simcoe.ca>; Dowdall, Terry <Terry.Dowdall@simcoe.ca>; French, Bill <Bill.French@simcoe.ca>; Allen, Don <Don.Allen@simcoe.ca>; Alex.Nuttall@parl.gc.ca; gmurray.mpp.co@liberal.ola.org; patrick.brownco@pc.ola.org; jim.wilson@pc.ola.org; officeofthemayor@barrie.ca; mayor@orillia.ca; Aitken, Mark <Mark.Aitken@simcoe.ca>; Korolnek, Debbie <Debbie.Korolnek@simcoe.ca>; ec.ministre-minister.ec@canada.ca; Elizabeth.May@parl.gc.ca; Thomas.Mulcair@parl.gc.ca; bmauro.mpp.co@liberal.ola.org; gmurray.mpp.co@liberal.ola.org; todd.simith@pc.ola.org; lisa.thompson@pc.ola.org; Mack, Stephanie <Stephanie.Mack@simcoe.ca>  
Subject: Simcoe County Organic Processing and Material Management Facility

Warden Marshall,

This email is in response to the attached letter sent to me by Mr. Rob McCullough, Director, Solid Waste Management, Simcoe County.

As a professional courtesy I have copied all of the people who were included in my original email to you (sent on May 26th, 2016) as some were excluded from the County's response. Many of them asked me to keep them apprised of the ongoing discussions on this matter.

In Mr. McCullough's response he states:

"As you noted in your letter, the County's Consultant, GDH Limited, conducted on-site work in January 2016 to preliminary assess natural heritage features at the preferred location. This initial assessment did not identify any conditions that would preclude development of these facilities."

End quote.

As a result of their site visit, GDH also determined and reported that this Simcoe County site (Freele County Forest) falls under the definition of a "SIGNIFICANT WOODLAND."

As such, GDH in their memorandum, then goes on to state:

"Specific to the SIGNIFICANT WOODLANDS feature of the Freele County Forest, woodlands are protected under the County of Simcoe Forest Conservation Bylaw."

End quote.

Notwithstanding the County's decision to select this beautiful woodland for this initiative, it will require amendments to:

- A) The County Official Plan, and
- B) The Township of Springwater Official Plan, and
- C) The Township of Springwater Zoning By-law...

Based on the fact that it is protected under the County's Conservation Bylaw, does this also mean that the County will have to amend the Simcoe Conservation Bylaw as it relates to SIGNIFICANT WOODLANDS?

In my humble opinion (based on the number of major amendments required as



noted above), it seems to me that previous elected officials of Simcoe County and the Township of Springwater went to great lengths to put in place official plans and policies to protect pristine forest tracts like this one from being turned into a "preferred location" for industrial use. Unfortunately, the majority of the current County Council have voted in favour of this.

It also seems that the Province of Ontario also has put in place policies to protect SIGNIFICANT WOODLANDS such as this.

Here, from my previous email to you, is information I shared related to the Provincial Policy on SIGNIFICANT WOODLAND, and a specific question that I still would like answered:

"The Provincial Policy Statement (PPS, [MMAH, 2014]) outlines policies related to natural heritage features and water resources. The Planning Act requires that planning decisions shall be consistent with the PPS.

According to the PPS, development and SITE ALTERATION SHALL NOT BE PERMITTED IN:

- Significant wetlands (in coastal areas or in Ecoregions 5E, 6E and 7E);
- Significant coastal wetlands; and

Unless it has been demonstrated that there will be no negative impacts on the natural features or their ecological functions, development and site alteration shall not be permitted in SIGNIFICANT WOODLANDS(south and east of the Canadian Shield)"

My question is as follows:

Given that development of the preferred site (e.g. clearing land, construction of buildings and bulldozing a roadway to accommodate transport and garbage trucks) would seem to involve impacting some "natural features", how would this development and site alteration have "no negative impacts on the natural features or their ecological functions"? Would this not contravene the Provincial policy? And, if so, why does the County not suspend further work associated with this forest site and instead focus on implementing the planned facility in one of the numerous industrial sites that are in the County that would be more suited to this initiative?"

End quote.

I believe that any reasonable person reading the response from the County in the attached County letter would agree that the response falls far short of answering my question as it relates to the SIGNIFICANT WOODLAND designation. Please let me know if my question needs clarification.

So, once again, I pose the above question from my original email to try to understand why development of this site would not be out of compliance with provincial policies, and, as stated by GDH "does not preclude development of these facilities."

I look forward to another response to this very specific question. And, with all due respect, I have absolutely no interest in "meeting individually" on this matter as you suggest in your letter as I would like the answer to my

question to be transparent and part of the public record re the ongoing public consultations.

Thank you.

Respectfully,

John Spencer  
Simcoe County Resident and Constituent

Quoting "McCullough, Rob" <Rob.McCullough@simcoe.ca>:

> Hello Mr. Spencer,  
>  
> Please find attached the County's response to your letter dated May 26, 2016.  
> The original will follow by mail.  
>  
> Rob McCullough  
> Director, Solid Waste Management  
> Email: rob.mccullough@simcoe.ca<mailto:rob.mccullough@simcoe.ca>  
> Phone: (705) 726-9300 ext. 1192  
> Cell: (705) 718-4716  
> Fax: (705) 726-9832  
>  
> \*\*\*\*\* CONFIDENTIALITY NOTICE\*\*\*\*\*  
> This electronic transmission and any accompanying attachments may  
> contain privileged or confidential information intended only for use  
> of the  
> individual(s) or organization(s) named above. Any distribution,  
> copying or action taken in reliance on the contents of this  
> communication by anyone other than the intended recipient(s) is  
> STRICTLY PROHIBITED by the County of Simcoe.  
> If you receive this communication in error, please notify the sender  
> at the above email address and delete this email immediately.  
>  
>

John Spencer  




County of Simcoe  
Solid Waste Management  
1110 Highway 26,  
Midhurst, Ontario L0L 1X0

Main Line (705) 726-9300  
Toll Free 1-866-893-9300  
Fax (705) 726-9832  
simcoe.ca



June 28, 2016

Mr. R. W. Wagner  
2928 Horseshoe Valley Road West  
Phelpston, Ontario  
L0L 2K0

**RE: County of Simcoe – Solid Waste Management Infrastructure Projects  
2976 Horseshoe Valley Road West, Springwater**

Dear Mr. Wagner:

We wish to acknowledge receipt of your correspondence (dated June 13, 2016, addressed to Warden Gerry Marshall) in regard to two County of Simcoe Solid Waste Management infrastructure projects – an Organics Processing Facility (OPF) and Materials Management Facility (MMF) – currently proposed for development at 2976 Horseshoe Valley Road West, Springwater. As a neighbouring landowner, we understand that you have questions regarding the development of these facilities. Further to earlier correspondence exchanged with County staff and our many discussions at the Public Consultation Sessions held in October 2015, the meeting held on March 23, 2016 for landowners within 500 m of the property, and the Public Information Sessions held on April 19, 2016, the Warden has forwarded your correspondence to staff to provide a response to your most recent questions and comments.

The County of Simcoe is committed to being environmental leaders and supporting infrastructure projects such as these that reflect our commitment to diversion, reducing garbage, and securely managing our own transfer and processing capacity. During project development, we have taken numerous steps to share information with the public and allay apprehension of near-neighbours, with an understanding of the sensitivities of siting waste management facilities. To provide some context, an Environmental Assessment (EA) is not required for either the OPF or the MMF, but the County has chosen to apply this methodology and go beyond what would be required to site this important infrastructure – infrastructure that will enable us to effectively and responsibly deliver services to all County residents.

The siting process for these facilities was extensive and sought feedback from the public, Aboriginal communities, agencies, and stakeholders. Led by industry-leading consultants (with impressive experience developing these facilities throughout the province), over 500 sites were evaluated through a three-screen process, applying over twenty environmental (such as the avoidance of wetlands and floodplains, vulnerable areas under Source Protection, prime agricultural areas, and sensitive receptors) and technical criteria. A short list of seven sites was presented for consultation in fall 2015, followed by a detailed comparative evaluation. Based on the recommendation from our experts, we reiterate the current direction of County Council – *that development of the OPF and MMF proceed with consideration that both facilities be located on a single site, located at 2976 Horseshoe Valley Road West, Springwater, and that additional engineering studies and an Environmental Impact Statement (EIS) on the preferred site be initiated to support procurement of technology and planning and environmental approvals.*

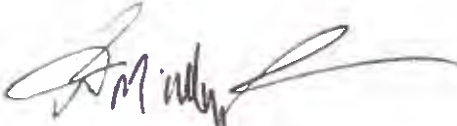
In regard to your suggested alternative location, this property was not submitted as a willing vendor privately-owned site and therefore was not evaluated as a potential location for the OPF (noting that it falls outside of the search area for the MMF). We will not speculate on the theoretical and as such will provide no comment on what process the County might follow should we be approached now by landowners offering their property for sale over one year later from the closing of the Request for Expression of Interest for property. Determining the preferred location encompassed a detailed, comprehensive process which went well beyond what would be required for siting these facilities. The development process will now go forward as directed.

Studies are currently being undertaken by an experienced team of engineers and Planners in consultation with the local municipality, the conservation authority, and provincial agencies. The purpose of these studies will be to confirm site conditions, provide justification for development of the OPF and MMF at 2976 Horseshoe Valley Road West, Springwater, and to ensure compliance with municipal and provincial legislation. Of note, the forthcoming Traffic Impact Study will address comments such as those included in your correspondence regarding traffic along this portion of Horseshoe Valley Road West (County Road 22). The results of these studies will be presented to County Council and publicly available for review.

In response to your specific inquiry regarding the potential to site the facility on an existing County landfill site, we have attached previous correspondence sent to you on October 5, 2015 which provides a summary of the evaluation of 53 properties related to County landfills. Again, this has been a comprehensive process to determine the preferred location, undertaken by experienced consultants, and supported by consultation. Development of the OPF or MMF on these properties was not the consultant's recommended option.

Please note that on-going consultation, seen as imperative to the success of this project, will continue throughout the next stages of development. It is anticipated that the next neighbouring landowner meeting will be in conjunction with discussion on organics processing technology. Further to that, we will meet again to review the results of the studies currently being undertaken. Also, as has been offered from the outset of this project, staff are available to meet individually with landowners such as yourself to discuss more specific concerns and questions you may have.

Regards,



Rob McCullough  
Director, Solid Waste Management

cc. Gerry Marshall, Warden, County of Simcoe  
Terry Dowdall, Deputy Warden, County of Simcoe  
Councillor Bill French  
Councillor Don Allen  
Honourable Glen R. Murray, Minister of the Environment and Climate Change  
Patrick Brown, MPP (Simcoe North)  
Jim Wilson, MPP (Simcoe-Grey)  
Mayor Jeff Lehman, City of Barrie  
Mayor Steve Clarke, City of Orillia  
Mark Aitken, CAO, County of Simcoe  
Debbie Korolnek, General Manager, Engineering, Planning & Environment, County of Simcoe

**From:** Robert Wagner [REDACTED]

**Sent:** Tuesday, June 14, 2016 12:01 AM

**To:** Warden

**Cc:** [deputywarden@simcoe.ca](mailto:deputywarden@simcoe.ca); Bifulchi, Nina; Burkett, Mike; Burton, Barry; Clarke, Basil; Cooper, Sandra; Cornell, George; Cox, Judith; Dollin, Lynn; Dubeau, Anita; French, Bill; Hough, Ralph; Hughes, Harry; Allen, Don; Keffer, Rob; Leduc, James; Little, Doug; Macdonald, Sandie C.; McKay, Gord A.; Milne, Rick; O'Donnell, John; Rawson, Bill; Ross, Mike; Saunderson, Brian; Small Brett, Mary; Smith, Brian F.; [chris-vanderkuys@simcoe.ca](mailto:chris-vanderkuys@simcoe.ca); Walma, Steffen; Warnock, Scott; Wauchope, Gord; [s.bray@wasagabeach.com](mailto:s.bray@wasagabeach.com); [r.ego@wasagabeach.com](mailto:r.ego@wasagabeach.com); [bonnie.smith@wasagabeach.com](mailto:bonnie.smith@wasagabeach.com); [b.stockwell@wasagabeach.com](mailto:b.stockwell@wasagabeach.com); [dmeasures@clearview.ca](mailto:dmeasures@clearview.ca); [kelwood@clearview.ca](mailto:kelwood@clearview.ca); [rwalker@clearview.ca](mailto:rwalker@clearview.ca); [sdavidson@clearview.ca](mailto:sdavidson@clearview.ca); [tpaterson@clearview.ca](mailto:tpaterson@clearview.ca); [cleishman@clearview.ca](mailto:cleishman@clearview.ca); [dbronee@clearview.ca](mailto:dbronee@clearview.ca); [m\\_brooksl@sympatico.ca](mailto:m_brooksl@sympatico.ca); [msharpe@ramara.ca](mailto:msharpe@ramara.ca); [onekind@rogers.com](mailto:onekind@rogers.com); [kjohnson@ramara.ca](mailto:kjohnson@ramara.ca); [tfryer@collingwood.ca](mailto:tfryer@collingwood.ca); [medwards@collingwood.ca](mailto:medwards@collingwood.ca); [cecclestone@collingwood.ca](mailto:cecclestone@collingwood.ca); [kjeffery@collingwood.ca](mailto:kjeffery@collingwood.ca); [ddoherty@collingwood.ca](mailto:ddoherty@collingwood.ca); [bmadigan@collingwood.ca](mailto:bmadigan@collingwood.ca); [klloyd@collingwood.ca](mailto:klloyd@collingwood.ca); [dlougheed@innisfil.ca](mailto:dlougheed@innisfil.ca); [rsimpson@innisfil.ca](mailto:rsimpson@innisfil.ca); [dorsatti@innisfil.ca](mailto:dorsatti@innisfil.ca); [sdaurio@innisfil.ca](mailto:sdaurio@innisfil.ca); [blougheed@innisfil.ca](mailto:blougheed@innisfil.ca); [cpayne@innisfil.ca](mailto:cpayne@innisfil.ca); [rnicol@innisfil.ca](mailto:rnicol@innisfil.ca); [rsandhu@townofbwg.com](mailto:rsandhu@townofbwg.com); [gbaynes@townofbwg.com](mailto:gbaynes@townofbwg.com); [rorr@townofbwg.com](mailto:rorr@townofbwg.com); [mcontois@townofbwg.com](mailto:mcontois@townofbwg.com); [pdylie@townofbwg.com](mailto:pdylie@townofbwg.com); [jmain@midland.ca](mailto:jmain@midland.ca); [pfile@midland.ca](mailto:pfile@midland.ca); [gmacdonald@midland.ca](mailto:gmacdonald@midland.ca); [coschefski@midland.ca](mailto:coschefski@midland.ca); [gcanning@midland.ca](mailto:gcanning@midland.ca); [jcontin@midland.ca](mailto:jcontin@midland.ca); [ssrathearn@midland.ca](mailto:ssrathearn@midland.ca); [mbiss@newtecumseth.ca](mailto:mbiss@newtecumseth.ca); [mbeattie@newtecumseth.ca](mailto:mbeattie@newtecumseth.ca); [pwhiteside@newtecumseth.ca](mailto:pwhiteside@newtecumseth.ca); [fsainsbury@newtecumseth.ca](mailto:fsainsbury@newtecumseth.ca); [djebb@newtecumseth.ca](mailto:djebb@newtecumseth.ca); [rnorcorss@newtecumseth.ca](mailto:rnorcorss@newtecumseth.ca); [sharrisonmcintyre@newtecumseth.ca](mailto:sharrisonmcintyre@newtecumseth.ca); [cross@newtecumseth.ca](mailto:cross@newtecumseth.ca); [glamb@townofbwg.com](mailto:glamb@townofbwg.com); [premier@ontario.ca](mailto:premier@ontario.ca); [pm@pm.gc.ca](mailto:pm@pm.gc.ca); [patrick.brownco@pc.ola.org](mailto:patrick.brownco@pc.ola.org); [ahoggarth.mpp.co@liberal.ola.org](mailto:ahoggarth.mpp.co@liberal.ola.org); [jim.wilson@pc.ola.org](mailto:jim.wilson@pc.ola.org); [officeofthemayor@barrie.ca](mailto:officeofthemayor@barrie.ca); [pferragine@townofbwg.com](mailto:pferragine@townofbwg.com); [mayor@orillia.ca](mailto:mayor@orillia.ca); [ec.ministre-minister.ec@canada.ca](mailto:ec.ministre-minister.ec@canada.ca); [elizabeth.may@parl.gc.ca](mailto:elizabeth.may@parl.gc.ca); [thomas.mulcair@parl.gc.ca](mailto:thomas.mulcair@parl.gc.ca); [bmauro.mpp.co@liberal.ola.org](mailto:bmauro.mpp.co@liberal.ola.org); [gmurray.mpp.co@liberal.ola.org](mailto:gmurray.mpp.co@liberal.ola.org); [todd.smith@pc.ola.org](mailto:todd.smith@pc.ola.org); [lisa.thompson@pc.ola.org](mailto:lisa.thompson@pc.ola.org)

**Subject:** Fwd: Proposed Waste Management Infrastructure Project; 2976 Horseshoe Valley Road West

Sent from my iPad

Begin forwarded message:

**Subject: Proposed Waste Management Infrastructure Project; 2976 Horseshoe Valley Road West**

Please reference the letter which is attached.

2928 Horseshoe Valley Road West  
Phelpston, Ontario  
L0L 2K0  
June 13, 2016

G. Marshall  
Warden  
County of Simcoe  
1110 Highway 26  
Midhurst, Ontario  
L0L 1X0

Sir:

Re: Proposed Waste Management Infrastructure Project  
2976 Horseshoe Valley Road West

Let me preface my comments and questions by clearly stating that I support the concept of creating the proposed facility.

Let me state equally clearly that, as you know, I have consistently opposed the conversion of any of our dwindling supply of forests to an industrial waste management facility. That has not been done in any other County in our Province, for good reason. Further, there were and are various industrial sites within our County which would be closer to the focal point of the greatest amounts of waste generation, closer to major transportation routes, and closer to the end market for the resultant recyclable material and green bin material (i.e. southern Ontario).

Before I state my list of concerns, I would also like to point out that a number of ratepayers have suggested various industrial sites for consideration. They have not simply complained “Not in my backyard”, but rather they have offered up valid alternatives, while also stating “**Not in anyone’s backyard, anywhere in our County, if the plan is to use one of our farms/forests**”.

Yet, their suggestions have been rebuffed.

The following are recorded examples of responses from you and your immediate circle of County Councillors:

- 1) I have on a number of occasions suggested that an existing landfill site be used for the proposed facility, similar to that which was constructed by the Aboriginal Community on Christian Island. We have a number of landfill sites in our County which are slated for imminent closure, and which would have no other useful purpose after closure. Nearby residents are already accustomed to the existence of these sites, and the existing/potential social and environmental impacts are already known.

Your response: Any of the existing landfill sites which are large enough, are situated on sites which are environmentally sensitive.

SUMMARY: The technology which is promised for the proposed site is touted by the County as very high tech, sufficient to protect us from any potential negative impacts. But, only if we place it within one of our forests. That same technology would not be reliable if placed on an existing landfill site.

**Can this really be what you are telling us?**

- 2) Several months ago, my wife sent a well written and polite e-mail to various members of County Council, expressing support for the concept, but suggesting consideration of alternative sites.

The response from one of your inner circle opened with “Shame on you .....”.

SUMMARY: That is not the type of response one would expect from an elected official with regard to ongoing assessment of options, during a planning phase which is still in progress. It appears that your commitment to the use of a forest for this project, is cast in stone and no discussion will be countenanced.

**Can this really be what you are telling us?**

- 3) The Mayor and Deputy Mayor of Springwater Township (who are automatically members of County Council) are on record as having approached you some time ago, with a suggested alternative site.

Your response: You rebuffed their suggestion as going against the process and decision of County Council.

SUMMARY: You appear to be blocking pertinent input from your own Councilors, and your motives for doing so are counter-intuitive. How can County Council’s decisions be made “For the Greater Good” (i.e. the County’s motto), when a select group of Councilors (yourself as leader) is refusing to allow County staff to assess relevant options and refusing to make County Council fully aware. This type of autocratic, unilateral decision-making does not work well within private enterprise. Yet, with ratepayers’ funds in hand, it appears to be your administrative method.

**Can this really be what you are telling us?**

I liken your approach to that of a ship’s captain, who is so fixated upon his ultimate destination that he refuses to listen to the ship’s officers with regard to minor course changes. We all know how that worked out for the captain of the Titanic. Yet, we seem to be on a collision course for another site 41 confrontation, due to your own intransigence.

Your Mr. Aitken, the County’s Chief Administrative Officer, is on record as offering the unsolicited comment at a public meeting, to the effect that “We have learned a lot from the Site 41 situation.”

I expected that one of those lessons would be that conversion of farms to landfill sites (i.e. Site 41) does not sit well with the public. The public demonstrations of resistance and the political backlash are still foremost in the minds of the ratepayers, 7 years after the County finally abandoned its ill-conceived intentions with regard to Site 41.

Yet, an otherwise logical project is today degenerating into a needlessly contentious issue.

Having said all of this, I invite your response to each of the questions I have posed above, as well as this one final question:

Are you receptive to consideration of alternative sites? If so, there is an industrial site at the junction of Highway 400 and Highway 88, comprised of 1 site of 100 acres and 2 other sites (adjoined) of 10 acres and 20 acres. This property has been available for development since March of last year, and as recently as 2 weeks ago the developer has had discussions with the Town of West Bradford/Gwillimbury along with **the Economic Development Officer from the County of Simcoe.**

What better location could there be?



It is near the centre of most of the County's waste generation, where the bulk of future population growth is expected, and it is en route to the markets for the end product. If we are to expect \$13 million in transportation savings over 20 years due solely to reduced shipping costs (as the County is claiming and which, by the way, only amounts to \$1.91 per County resident per year), imagine the savings if we were to ship south (and only south), rather than shipping north from the centre of most waste generation and then shipping back south again.

As for noise pollution, who would notice additional trucks travelling along that section of Hwy 400?

It may/may not be more expensive to obtain that (or a similar) site than to use one of our existing forests but, given that it would already have an access road and utilities on site, the capital costs could well be less than those envisioned for conversion of our forest site.

Conversion of the forest site has been projected by your staff as requiring leveling of a sizable hill which would likely impact a cemetery and a residence (expropriation???) at the top of that hill, creation of acceleration and deceleration lanes, creation of a 500 metre road and hydro lines through the heart of the forest to accommodate the projected truck traffic which is scheduled for 13 hours per day (6:00 a.m. to 7:00 p.m., 6 days a week at the approximate rate of 1 truck arriving/departing every 3 minutes), all of this on a heavily travelled route to cottage country, Wasaga beach, ski hills, etc. Local businesses may need to be compensated during the extended period of time that the main road is closed for the proposed construction and, in fact, may not survive a full season's impact on their revenues.

If there are any added costs for acquisition of an industrial site or conversion of an existing landfill site, i.e. costs that might exceed the conversion of one of our forests, why not simply halt the County's ongoing acquisition of forests over the next several years? The resultant saving could then be redirected toward any envisioned higher costs of acquiring an industrial site or for converting an existing landfill site.

Why continue to buy additional forests, when you have already made it clear that you consider 5 of our existing forests to be surplus/ expendable ( i.e. the 5 forests that made the "short list" of sites last September, at which time only 1 industrial site and 1 privately owned site made that list)?

If you are receptive to making County Council aware of this alternative site and to instructing County staff to compare that site to our forest sites, using the same criteria that resulted in the selection of one of our forests, the contact information for that industrial site is as follows:

Grant Pretorius  
Strathallen Capital Corp.  
416-980-6445

<https://strathallen.com/>

If not, or if you intend to continue refusing assessment of other industrial sites which are offered up for consideration, please advise.

Whatever your decision, a full response to each of the questions posed above is requested.

R.W. Wagner (Mr)

c.c. All County Councilors  
c.c. All Township Councilors  
c.c. Office of the Prime Minister of Canada  
c.c. Catherine McKenna, Minister of Environment  
c.c. Thomas Mulcair, MP  
c.c. Elizabeth May, MP

c.c. Kathleen Wynne, Premier of Ontario  
c.c. Bill Mauro, MPP & Minister  
c.c. G. Murray, MPP  
c.c. Patrick Brown, MPP  
c.c. Ann Hogarth, MPP  
c.c. Jim Wilson, MPP  
c.c. Todd Smith, MPP  
c.c. Lisa Thompson, MPP



**From:** McCullough, Rob

**Sent:** Friday, June 24, 2016 4:02 PM

**To:** [REDACTED]

**Cc:** Mack, Stephanie <Stephanie.Mack@simcoe.ca>; Korolnek, Debbie <Debbie.Korolnek@simcoe.ca>; Aitken, Mark <Mark.Aitken@simcoe.ca>; Marshall, Gerry W. <Gerry.Marshall@simcoe.ca>

**Subject:** FW: Proposed Waste Management Infrastructure Project; 2976 Horseshoe Valley Road West

Hello Mr. Wagner,

I have been requested to respond to your communication. I expect to have this response ready to send you by the middle of next week.

Sincerely,

Rob McCullough  
Director, Solid Waste Management  
Email: [rob.mccullough@simcoe.ca](mailto:rob.mccullough@simcoe.ca)  
Phone: (705) 726-9300 ext. 1192  
Cell: (705) 718-4716  
Fax: (705) 726-9832

\*\*\*\*\* CONFIDENTIALITY NOTICE\*\*\*\*\*

This electronic transmission and any accompanying attachments may contain privileged or confidential information intended only for use of the individual(s) or organization(s) named above. Any distribution, copying or action taken in reliance on the contents of this communication by anyone other than the intended recipient(s) is STRICTLY PROHIBITED by the County of Simcoe.

If you receive this communication in error, please notify the sender at the above email address and delete this email immediately.

**From:** Robert Wagner [[mailto:\[REDACTED\]](mailto:[REDACTED])]

**Sent:** Thursday, June 23, 2016 6:14 PM

**To:** Warden

**Cc:** Daly, John; Dowdall, Terry; Allen, Don; Bifulchi, Nina; Burkett, Mike; Burton, Barry; Clarke, Basil; Cooper, Sandra; Cornell, George; Cox, Judith; Dollin, Lynn; Dubeau, Anita; French, Bill; Hough, Ralph; Hughes, Harry; Keffer, Rob; Leduc, James; Little, Doug; Macdonald, Sandie C.; McKay, Gord A.; Milne, Rick; O'Donnell, John; Ross, Mike; Saunderson, Brian; Small Brett, Mary; Smith, Brian F.; Smith, Jamie; Vanderkruys, Chris; Walma, Steffen; Warnock, Scott; Wauchope, Gord; [rsandhu@townofbwg.com](mailto:rsandhu@townofbwg.com); [gbaynes@townofbwg.com](mailto:gbaynes@townofbwg.com); [glamb@townofbwg.com](mailto:glamb@townofbwg.com); [rorr@townofbwg.com](mailto:rorr@townofbwg.com); [pferragine@townofbwg.com](mailto:pferragine@townofbwg.com); [mcontois@townofbwg.com](mailto:mcontois@townofbwg.com); [pdykie@townofbwg.com](mailto:pdykie@townofbwg.com); [tfryer@collingwood.ca](mailto:tfryer@collingwood.ca); [medwards@collingwood.ca](mailto:medwards@collingwood.ca); [cecclestone@collingwood.ca](mailto:cecclestone@collingwood.ca); [kjeffery@collingwood.ca](mailto:kjeffery@collingwood.ca); [ddoherty@collingwood.ca](mailto:ddoherty@collingwood.ca); [bmadigan@collingwood.ca](mailto:bmadigan@collingwood.ca); [kllloyd@collingwood.ca](mailto:kllloyd@collingwood.ca); [dlougheed@innisfil.ca](mailto:dlougheed@innisfil.ca); [rsimpson@innisfil.ca](mailto:rsimpson@innisfil.ca); [dorsatti@innisfil.ca](mailto:dorsatti@innisfil.ca); [sdaurio@innisfil.ca](mailto:sdaurio@innisfil.ca); [blougheed@innisfil.ca](mailto:blougheed@innisfil.ca); [cpayne@innisfil.ca](mailto:cpayne@innisfil.ca); [rnicol@innisfil.ca](mailto:rnicol@innisfil.ca); [jmain@midland.ca](mailto:jmain@midland.ca); [pfile@midland.ca](mailto:pfile@midland.ca); [gmacdonald@midland.ca](mailto:gmacdonald@midland.ca); [coschefski@midland.ca](mailto:coschefski@midland.ca); [gcaning@midland.ca](mailto:gcaning@midland.ca); [jcontin@midland.ca](mailto:jcontin@midland.ca); [sstrathearn@midland.ca](mailto:sstrathearn@midland.ca); [mbiss@newtecumseth.ca](mailto:mbiss@newtecumseth.ca); [mbeattie@newtecumseth.ca](mailto:mbeattie@newtecumseth.ca); [pwhiteside@newtecumseth.ca](mailto:pwhiteside@newtecumseth.ca); [fsainsbury@newtecumseth.ca](mailto:fsainsbury@newtecumseth.ca); [djebb@newtecumseth.ca](mailto:djebb@newtecumseth.ca); [rnorcross@newtecumseth.ca](mailto:rnorcross@newtecumseth.ca); [sharrisonmcintyre@newtecumseth.ca](mailto:sharrisonmcintyre@newtecumseth.ca); [cross@newtecumseth.ca](mailto:cross@newtecumseth.ca);

[s.bray@wasagabeach.com](mailto:s.bray@wasagabeach.com); [r.ego@wasagabeach.com](mailto:r.ego@wasagabeach.com); [bonnie.smith@wasagabeach.com](mailto:bonnie.smith@wasagabeach.com);  
[b.stockwell@wasagabeach.com](mailto:b.stockwell@wasagabeach.com); [dmeasures@clearview.ca](mailto:dmeasures@clearview.ca); [kelwood@clearview.ca](mailto:kelwood@clearview.ca);  
[rwalker@clearview.ca](mailto:rwalker@clearview.ca); [sdavidson@clearview.ca](mailto:sdavidson@clearview.ca); [tpaterson@clearview.ca](mailto:tpaterson@clearview.ca); [cleishman@clearview.ca](mailto:cleishman@clearview.ca);  
[dbronee@clearview.ca](mailto:dbronee@clearview.ca); [m\\_brooksl@sympatico.ca](mailto:m_brooksl@sympatico.ca); [msharpe@ramara.ca](mailto:msharpe@ramara.ca); [onekind@rogers.com](mailto:onekind@rogers.com);  
[kjohnson@ramara.ca](mailto:kjohnson@ramara.ca); [mtaylor@townshipofsevern.com](mailto:mtaylor@townshipofsevern.com); [jdunlop@townshipofsevern.com](mailto:jdunlop@townshipofsevern.com);  
[mburkett@townshipofsevern.com](mailto:mburkett@townshipofsevern.com); [rstevens@townshipofsevern.com](mailto:rstevens@townshipofsevern.com);  
[dwestcott@townshipofsevern.com](mailto:dwestcott@townshipofsevern.com); [justin.trudeau@parl.gc.ca](mailto:justin.trudeau@parl.gc.ca); [Catherine.McKenna@parl.gc.ca](mailto:Catherine.McKenna@parl.gc.ca);  
[elizabeth.may@parl.gc.ca](mailto:elizabeth.may@parl.gc.ca); [thomas.mulcair@parl.gc.ca](mailto:thomas.mulcair@parl.gc.ca); [alex.nuttall.p9@parl.gc.ca](mailto:alex.nuttall.p9@parl.gc.ca); [premier@ontario.ca](mailto:premier@ontario.ca);  
[bmauro.mpp.co@librral.ola.org](mailto:bmauro.mpp.co@librral.ola.org); [patrick.brownco@pc.ola.org](mailto:patrick.brownco@pc.ola.org); [ahoggarth.mpp.co@liberal.ola.org](mailto:ahoggarth.mpp.co@liberal.ola.org);  
[gmurray.mpp.co@liberal.ola.org](mailto:gmurray.mpp.co@liberal.ola.org); [todd.smith@pc.ola.org](mailto:todd.smith@pc.ola.org); [lisa.thompson@pc.ola.org](mailto:lisa.thompson@pc.ola.org);  
[jim.wilson@pc.ola.org](mailto:jim.wilson@pc.ola.org)

**Subject:** Fwd: Proposed Waste Management Infrastructure Project; 2976 Horseshoe Valley Road West

In reference to the attached letter which I sent to you on June 13, I had hoped that your past evasiveness had not progressed to complete non-responsiveness. Shall I expect a response to the questions posed in my letter? If so, when? If you prefer not to deal with any of my questions, I will seek the direct assistance of more senior politicians who are committed to "doing the right thing".

R.W. Wagner (Mr.)

Sent from my iPad

Begin forwarded message:

**Subject: FW: Proposed Waste Management Infrastructure Project; 2976 Horseshoe Valley Road West**

Please reference the letter which is attached.



**County of Simcoe**  
**Office of the Warden**  
1110 Highway 26,  
Midhurst, Ontario L0L 1X0

Main Line (705) 726 9300  
Toll Free 1 866 893 9300  
Fax (705) 725 1285  
Web: simcoe.ca



July 8, 2016

Mr. R. W. Wagner  
2928 Horseshoe Valley Road West  
Phelpston, Ontario  
L0L 2K0

**RE: County of Simcoe – Solid Waste Management Infrastructure Projects 2976 Horseshoe Valley Road West, Springwater**

Dear Mr. Wagner,

In response to your letter received July 1<sup>st</sup>, 2016, I hope you can appreciate that projects of this scale, whether it be in the private or public sector, must follow an approved process. Our process has three distinct phases: 1. Siting; 2. Site Specific Studies and Approvals; 3. Development.

The process began in 2014, and after many months of research, evaluation of 502 sites by expert consultants and expansive consultation, Phase 1 (Siting) was completed when the will of Council overwhelmingly selected the 2976 Horseshoe Valley Road West, Springwater, as the preferred location for a co-located facility.

Council has directed staff to begin Phase 2 and the project team is now working to complete site-specific studies, technology procurement, planning and environmental approvals. We begin another round of consultation related to Phase 2 later this fall and will continue with our nearby neighbour meetings as the project moves forward.

I appreciate the concerns you have about this facility being placed on 11 acres of the available 207 acre parcel of land neighboring your property. Our Council has been united in our commitment to reducing garbage, increasing our diversion, lessening our reliance on landfills, and managing our own waste transfer and processing capacity. Not just for the greater good of all our 465,000 residents, but to serve future generations and show leadership as waste-related legislation evolves. With our Council's decision to approve this site as the preferred location, we are no longer just *talking* about positive change, we are making giant *strides* in the right direction. Simply put, this has been an open, transparent, extensive, and unbiased process that is being driven by the right intentions.

I have reviewed your questions in detail and have the following comments:

Q1: The technology procurement process will begin later this fall. Once underway, technology selection will consider requirements at the preferred site only. As you may recall, 53 open and closed landfill sites were considered during the siting process. Only one landfill site was carried forward to the short list as a potential site for the OPF only – ranking 3<sup>rd</sup> among OPF options (not considered appropriate for the MMF as it was outside of the search area).

Q2: Please feel free to email myself or other members of Council with any relevant comments, concerns or feedback.

Q3 & 4: As mentioned above, Siting is now complete. Staff have been given direction to proceed to Phase 2. You're open to communicate with myself and members of Council with further information; however, our staff will remain focused on completing Phase 2 and reporting back to our Council and the public with their findings.

I trust the information provided above, in addition to the detailed response provided by Mr. McCullough on June 28, 2016, addresses your questions.

I encourage you to continue to communicate with me directly. Given the size, scope, and technical elements of this project, combined with our wide-range of municipal services at the County, you will continue to receive correspondence from staff members on my behalf from time to time. Staff act on the direction and will of Council. Our staff are subject matter experts and leaders in their respective fields—I am hopeful you will find their insights helpful.

I've attended all ten public information sessions, arriving early, staying late speaking with residents (including yourself on many occasions), and fielding questions from local media. I continue to communicate our progress and absolutely operate with an open door policy. I don't believe I've been evasive in any way. I can share that from my personal perspective that our consultants, working alongside our staff, have done a tremendous job in navigating this difficult process and identifying the preferred site. I am confident that our Council endorsed the best possible location.

Sincerely,

A handwritten signature in black ink, appearing to read 'Gerry Marshall', with a stylized, cursive script.

Gerry Marshall  
Warden, County of Simcoe  
Mayor, Town of Penetanguishene

**From:** Robert Wagner [[mailto: \[REDACTED\]](#)]  
**Sent:** Friday, July 01, 2016 1:49 AM  
**To:** Marshall, Gerry W. <[Gerry.Marshall@simcoe.ca](mailto:Gerry.Marshall@simcoe.ca)>; Daly, John <[John.Daly@simcoe.ca](mailto:John.Daly@simcoe.ca)>  
**Subject:** Fw: Response to letter from Mr. Wagner dated June 14, 2016

Please refer to the attached response to your Mr. McCullough's letter dated June 28, 2016.

2928 Horseshoe Valley Road West  
 Phelpston, Ontario  
 L0L 2K0  
 June 30, 2016

G. Marshall  
 Warden  
 County of Simcoe  
 1110 Highway 26  
 Midhurst, Ontario  
 L0L 1X0

Sir:

Re: Proposed Waste Management Infrastructure Project  
 2976 Horseshoe Valley Road West

Referring to my letter dated June 13 and to the response from your Mr. McCullough dated June 28, I am surprised and disappointed that you would entrust the preparation of your response to a subordinate, without any apparent attempt on your part to review and vet his comments. This is particularly alarming when several of the questions posed were directly related to your own previous public comments, for which McCullough could not possibly be held accountable.

Further, McCullough's letter did not provide responses to the very specific questions I had posed to you. You will recall that I have previously accused you in more than one public forum, of demonstrating evasiveness with regard to any questions which might raise public uncertainty as to your stated commitment to "doing the right thing".

With that in mind, I have reiterated those questions below, in a format which should assist you in providing clear answers. I trust that the evasiveness of which I have previously accused you will be set aside this time.

#### QUESTION

RESPONSE (CHECK ONE)  
 YES NO

Will the technology being considered work on an existing landfill site?

Are County Councilors willing to accept and consider updated information from ratepayers?

Will you personally allow and encourage the ongoing flow of suggestions, and full consideration/analysis thereof, from ratepayers to County Councilors and County staff?

Will you instruct County staff to continuously seek out other suitable industrial sites as the process continues, so as to ensure all opportunities are examined?

This situation need not degenerate further, but that will be dependent entirely upon your willingness to "walk the walk" rather than simply "talk the talk".

**REMEMBER SITE 41**

R.W. Wagner (Mr)

c.c. Kathleen Wynne, Premier of Ontario  
c.c. All County Councilors  
c.c. All Township Councilors  
c.c. Office of the Prime Minister of Canada  
c.c. Catherine McKenna, Minister of Environment  
c.c. Thomas Mulcair, MP  
c.c. Elizabeth May, MP  
c.c. Alex Nuttall, M.P.

c.c. Bill Mauro, MPP & Minister  
c.c. G. Murray, MPP  
c.c. Patrick Brown, MPP  
c.c. Ann Hogarth, MPP  
c.c. Jim Wilson, MPP  
c.c. Todd Smith, MPP  
c.c. Lisa Thompson, MPP



**County of Simcoe**  
**Office of the Warden**  
1110 Highway 26,  
Midhurst, Ontario L9X 1N6

Main Line (705) 726-9300  
Toll Free (866) 893-9300  
Fax (705) 725-1285  
**simcoe.ca**

August 26, 2016

Mr. R. W. Wagner  
2928 Horseshoe Valley Road West  
Phelpston, ON L0L 2K0

**RE: County of Simcoe – Solid Waste Management Infrastructure Projects**  
**2976 Horseshoe Valley Road West, Springwater**

Dear Mr. Wagner:

I wish to acknowledge receipt of your correspondence (received by e-mail on August 11, 2016) in regards to various County of Simcoe programs. Our comments are included below. Please note that this response has been prepared with the assistance of County staff as it contains some specific technical content.

Mobile Education Unit (your Item No. 1)

Our Mobile Education Unit (MEU), which you refer to as a 5<sup>th</sup> wheel trailer, proudly serves as a travelling classroom and is an important component of our Promotion and Education program – teaching the importance of waste reduction and diversion of waste from landfill. The target audience is primarily children and the MEU is frequently used at schools in conjunction with the Learning & Living Green program, which brought Blue Box recycling and diversion of organics to County schools in September 2010. In addition, the MEU has visited numerous fairs, churches, long term care homes, trade shows, municipal open houses, community events, and summer camps throughout the County. It is estimated that since its commissioning in 2011, 34,000 residents have learned about waste management in the MEU.

Purchased in 2010 with the assistance of funding from the Continuous Improvement Fund (CIF), the total cost to the County of the MEU, including the trailer, electrical/heating/cooling, graphic wrap, design services and custom software, and touch screen computers for interactive games was approximately \$150,000 (a project grant of \$45,810 was received from CIF partially offsetting the total cost). A tow vehicle was purchased for \$29,000 which is also used for other Solid Waste Management activities. In 2015, \$1,270 was spent on trailer maintenance.

For reference, additional details on the MEU and its success can be found at [simcoe.ca](http://simcoe.ca) and in the following reports:

- Item CS 11-133 – Presentations regarding County waste management initiatives (August 10, 2011)
- Item CS 12-011– Achievements and Recognition (January 11, 2012)
- *Mobile Education Unit Final Report – Continuous Improvement Fund Project # 276* (County of Simcoe, May 12, 2012) [http://cif.wdo.ca/pdf/reports/276\\_report.pdf](http://cif.wdo.ca/pdf/reports/276_report.pdf)



## Roadwork – Horseshoe Valley Road West (your Item No. 2)

Detailed budget information is posted at [simcoe.ca/finance](http://simcoe.ca/finance). The 2016 Roads Construction budget begins on page 117 of the following link:

<http://www.simcoe.ca/Finance/Documents/2016%20Draft%20Department%20Budgets%20FINAL.pdf>

Noted work on Horseshoe Valley Road West (County Road 22) referenced in your letter was outlined on page 117:

*Facility costs include \$6.4M for 55.6KM's of road rehabilitation for sections of CR 22, 13, 45, 4, 29, 19, 47, 3, 27 and 169, funded by gas tax. \$200K for crack sealing and guide rails and \$220K for traffic light maintenance.*

Further to this, information from our Transportation and Engineering Department indicates that microsurfacing was undertaken from Gill Road to Craighurst in August 2016. Specifically, this 4.5 km portion had \$157,500 allocated in the budget to undertake this work. This work, part of on-going maintenance on our roads, is required to ensure optimal life cycle performance i.e. lowest life cycle maintenance costs. The work was fully funded by federal gas tax.

## Comments from Public Consultation (your Item No. 3)

In regard to comments made by Mr. Rob McCullough during the fall Public Consultation Sessions (which were undertaken in October 2015), we have reviewed our notes and the audio recordings to determine which exchange your letter references as meetings were not held in September. On October 15, 2015, at the evening session in Elmvale, we note the following exchange between Mr. McCullough and a resident who had recently moved from Richmond Hill to a residence on Penetanguishene Road. This would appear to be the exchange you are referring to.

Mr. McCullough provided the following response in reference to the buffer around the facility and what that area could be used for following construction of the facility. We note below the specific exchange and have included, for your reference, the resident's introduction:

### *Public Consultation Session – Elmvale evening*

#### **Resident (58:54)**

"So, why am I here? I just bought a house on Penetanguishene Road which is unfortunately, or fortunately, depending on how things work out, backing on the 400 and so I'm looking right across at the Millennium Tract and at the Craighurst Tract. I'm an avid off road motorcyclist and so I've moved up here to semi-retire, take a little bit of a break and, hopefully, do a lot of riding, being able to take advantage of the forest and things like that. So, obviously this comes to concern – we haven't even moved in yet and this is already the sort of the things happening. So it will be interesting to see how it goes."

#### **Resident (1:03:44)**

"So, how do we know what that buffer is? As an example the Millennium and Craighurst – I think the first time we saw the map you guys actually had the grey part in the Millennium only, now you got it entirely in Craighurst. So, it's moved since the beginning of the process. It looks like it's moved anyways. I could be wrong, but it looks like it's totally in Craighurst now whereas before it was, we thought, totally in Millennium. So, but, either way how much of that forest will still be available for us to use as the public? We use that forest, I use that forest. It's not a busy forest are to ride so it's great for us to go riding in. So, if you have that small circle there when I look at it, it looks like, to me, great, most of the forest is going to be available for use. But, if you then put a buffer around it and there us a fence half a mile away all the way around your property are we losing access to that whole forest? How do we, how do we know what we're actually going to have – 'cause your grey area doesn't show me that – how do we know what the impact is to me for that forest?"

---

**Mr. Rob McCullough (1:04:30)**

"I, I hear you, and I understand your concern. What I would say is the buffer around us, the forest, I can't see a reason what that wouldn't be allowed for, for passive use – for recreational trails, that sort of thing. Certainly right not up against the building, like there is going to be some area around there. But we, we would, we would take a reasonable buffer area around that site but the rest of the forest would be open to normal County forest use."

As you may be aware, *normal County forest use* varies from tract to tract, with off-road motorized vehicles allowed **on some** designated trails. Mr. McCullough's response does not provide assurance that the resident's "hobby of off-road ATV'ing" would be able to continue. The response quite simply (and accurately) indicates that normal County forest use would continue in areas outside of the facility footprint. Of note, the Ontario Federation of Snowmobile Clubs (OFSC) trail does bisect the Freele Tract – and in this case, it is anticipated that use of these motorized vehicles will indeed continue on a trail located outside of the footprint following construction of the OPF/MMF.

**Forestry** (your Item No. 4)

On July 6, 2016, you submitted a series of questions to Mr. Graeme Davis, County Forester, copied to Mr. John Daly, County Clerk, in regard to *Item CCW 16-238 – Simcoe County Forest – 2015 Annual Report* (June 14, 2016). On July 14, 2016, the Clerk responded with a linked (Access Request) form and noted upon receipt of the prescribed \$5 application fee, the Clerk's Department, in consultation with the appropriate department, would process your request for records in accordance with the Municipal Freedom of Information and Protection of Privacy Act (MFIPPA). Since this correspondence, staff have indicated that you have sent subsequent e-mails to Mr. Davis on August 4 and August 16, 2016 (the latter e-mail was copied to the Clerk) on this same matter.

As noted above, on July 14, 2016 we provided you with instructions on how to access this information through our formal process. These same instructions are included here again for your review. In order to process your request for records, we kindly ask that you submit your written request, along with the mandatory \$5 application fee to the County Clerk's Department, identifying the records you are seeking. Upon receipt of your request and the application fee, the County Clerk's office will process your request in accordance with MFIPPA. The County's Access Request Form can be found here:

<http://www.simcoe.ca/Clerks/Pages/mfippa.aspx>

Please note that a response to a subsequent e-mail to Mr. Davis dated July 6, 2016 on another matter related to forestry was provided a response on July 14, 2016.

**Alternative Sites** (your Item No. 5)

We understand that you support the concept of developing these facilities (as outlined in your letter to me dated June 13, 2016) – but note that you feel they belong in an alternate location. The siting process is over and as outlined by Mr. McCullough in his letter to you dated June 28, 2016, I reiterate the following:

In regard to your suggested alternative location, this property was not submitted as a willing vendor privately-owned site and therefore was not evaluated as a potential location for the OPF (noting that it falls outside of the search area for the MMF). We will not speculate on the theoretical and as such will provide no comment on what process the County might follow should we be approached now by landowners offering their property for sale over one year later from the closing of the Request for Expression of Interest for property. Determining the preferred location encompassed a detailed, comprehensive process which went well beyond what would be required for siting these facilities. The development process will now go forward as directed.

---

For clarity, please note that owners of alternate sites will not be contacted or the siting process continue with an investigation of alternative sites. County Council has provided clear direction that further studies be conducted at 2976 Horseshoe Valley Road West, Springwater, and development of both the OPF and MMF be advanced at this preferred location.

### Integrity Commissioner

In regard to your last request for information on the Integrity Commissioner, I was made aware of Councillor Ralph Hough's response to you which provided the information you sought. For your convenience, we have included this once again for your review.

Section 223.3 of the Municipal Act authorizes a municipality to appoint an Integrity Commissioner who reports to Council and who is responsible for performing, in an independent manner, the functions assigned by the municipality with respect to;

- (a) the application of the code of conduct for members of council and the code of conduct for members of local boards or of either of them;
- (b) the application of any procedures, rules and policies of the municipality and local boards governing the ethical behaviors of member of council and of local boards or of either of them; or
- (c) both of clauses (a) and (b)

At this time, the County has not appointed an Integrity Commissioner. There is a provision within the County's Council Code of Conduct that allows for Council to appoint an Integrity Commissioner should the Warden believe there has been a contravention of the Council Code of Conduct that warrants such action. However, there have been no instances requiring such to date.

Section 223.13 of the Municipal Act also provides for a municipality to appoint an Ombudsman whose function is to investigate in an independent manner any decision or recommendation made or act done or omitted in the course of the administration of the municipality, its local boards, etc. It should be noted that the powers of the Ombudsman do not include the power to overturn a decision of a Council but rather to assess that the administrative process followed was appropriate. Again, the County has not appointed its own Ombudsman at this time, therefore, by default, the powers of the Ombudsman would be exercised by the Provincial Ombudsman.

I hope that this information provides closure to the above matters.

Sincerely,



Gerry Marshall  
Warden, County of Simcoe  
Mayor, Town of Penetanguishene

---

From: Robert Wagner [mailto:[REDACTED]]  
Sent: Thursday, August 11, 2016 9:55 PM  
To: Warden <Warden@simcoe.ca>  
Cc: jowen@postmedia.com; SpringwaterNews@Rogers.com <SpringwaterNews@Rogers.com>; Daly, John <John.Daly@simcoe.ca>  
Subject: County of Simcoe's Attacks on Our Forests

Warden Marshall: By now, you will have seen the first news release issued on behalf of the "Friends of Simcoe Forests Inc."

The following observations and questions are relevant to this matter.

1) Today I noticed a very impressive 5th wheel trailer (complete with an awning), which was to be accorded routine servicing at a local business. That expensive-appearing trailer bore the following signage:  
Simcoe County  
Managing Your Waste

Upon enquiring, I was told that this vehicle has nothing to do with managing our waste but, rather, it is used at local fairs and other venues to promote the County's image of innovation in waste management.

Is that really necessary? Is this an example of your responsible usage of the ratepayers' money? What was the purchase price of that trailer? What is the cost of its insurance, licensing and annual maintenance? What tangible value does it generate for the expenditure of our money?

2) There is currently repaving of Horseshoe Valley Road taking place, immediately in front of the Freele Tract of forest which the County intends to convert to a garbage depot. There are 3 large pieces of equipment in use, and a total of 10 workers.

Upon approaching a Simcoe County "Transportation and Engineering" vehicle which was in attendance, I was told that this type of repaving is intended to extend the life of roads by up to 5 years.

Is that really necessary? Is this an example of your responsible usage of the ratepayers' money? I drive that section of road every day, and it is in fine condition. Given that the County's staff engineers have disclosed at the recent public meetings, their intention to reduce the grade of the hill which is being repaved and create additional lanes to access/depart the garbage depot, all within the next 2 years, what is the point in spending our money to repave a section of road which is to be imminently torn up?

What is the cost of this repaving? And please, don't attempt to tell me that is part of a larger contract for ongoing maintenance. Any such contract can have its individual components itemized and the costs can be broken out. Are your staff members so accustomed to dealing with public money that they lack the incentive to adjust expenditures as opportunities arise?

3) At the 2nd set of public meetings last September, your Mr. McCullough was questioned by a concerned resident who had just purchased a residence in Craighurst. He had not yet moved into that residence when the short list of 7 sites for the proposed garbage depot was announced. Five of the 7 short-listed sites were county forests, and that gentleman was concerned that his enjoyment of his hobby of off-road ATV'ing would be affected. McCullough assured him that he would be able to continue enjoying his hobby, as the footprint of the garbage depot would not preclude his existing pastime.

McCullough was seemingly so intent on reducing public resistance that he failed to point out that 4 of the 5 forests which were short-listed are, in fact, prohibited to motorized vehicles. This prohibition specifically pertains to the Freele Tract. When McCullough was subsequently challenged on offering that factual misrepresentation, he claimed not to be aware of the restriction. Is this one of your resident "experts" on whom you rely for guidance? Was he not also a proponent of the conversion of Site 41 to a garbage

dump? When will the attendees at the September meeting be contacted to be given the true information, so that their legitimate concerns can be dealt with in an honest and open manner?

4) In the annual report submitted by your Forester, Graeme Davis, under the County's most recent 5-year renewal of its 20-year forestry management plan, there were no forests declared as surplus. Yet, 1 had been clear cut to make way for a public works facility, and 5 more had been on the short list for conversion to the garbage depot. As you are well aware, 1 of those 5 forests has been selected and presumably the other 4 are still up for consideration for the next industrial infrastructure project which arises. Davis has still not responded to my month-old inquiry on this matter, nor my recent 2nd request.

5) When you were offered the specific details of an industrial site on Highway 400, near Bradford, which could present a viable alternative to any of our forests, you turned the matter over to McCullough, who rejected the suggestion on the basis that the property owners had not come forward when the County was seeking such properties a year earlier. That property was not available a year earlier and, rather than picking up the phone and contacting the representative whose name had been offered up, you and your staff simply rejected the suggestion out-of-hand.

Do you stand behind your staff in all of the foregoing matters? Or, do you now find yourself front and centre in trying to politically spin your way out of these embarrassments?

The past evasiveness of which I have accused you has been refined to the point where your last response to me was evasive about being evasive! How trite!

It is with all of the foregoing questions in mind that I ask 1 final question. Over a month ago, I sent 31 individual E-mails to 31 County Councillors, enquiring as to the name and contact particulars of the County's Integrity Commissioner. I specifically cited the relevant provincial legislation which pertains. Only 1 of 31 Councillors responded, and your Mr. Daly is aware of this. I still don't have an answer to that question.

When can I expect a response to the each of the foregoing questions?

R.W. Wagner  
Simcoe County Resident



**County of Simcoe  
Solid Waste Management**  
1110 Highway 26,  
Midhurst, Ontario L0L 1X0

Main Line (705) 726-9300  
Toll Free 1-866-893-9300  
Fax (705) 726-9832  
simcoe.ca



June 28, 2016

Ms. Cindy Mercer  
1601 Rainbow Valley Road East  
Phelpston, Ontario  
L0L 2K0

**RE: County of Simcoe – Solid Waste Management Infrastructure Projects  
2976 Horseshoe Valley Road West, Springwater**

Dear Ms. Mercer:

We wish to acknowledge receipt of your correspondence (sent via e-mail to Warden Gerry Marshall on June 14, 2016 with attached letter addressed to the Honourable Catherine McKenna, MP, Minister of Environment and Climate Change) in regard to two County of Simcoe Solid Waste Management infrastructure projects – an Organics Processing Facility (OPF) and Materials Management Facility (MMF) – currently proposed for development at 2976 Horseshoe Valley Road West, Springwater. As a neighbouring landowner, we understand that you have questions regarding the development of these facilities. Further to earlier correspondence exchanged with County staff and our many discussions at the Public Consultation Sessions held in October 2015, the meeting held on March 23, 2016 for landowners within 500 m of the property, and the Public Information Sessions held on April 19, 2016, the Warden has forwarded your correspondence to staff to provide a response to your most recent comments.

The County of Simcoe is committed to being environmental leaders and supporting infrastructure projects such as these that reflect our commitment to diversion, reducing garbage, and securely managing our own transfer and processing capacity. During project development, we have taken numerous steps to share information with the public and allay apprehension of near-neighbours, with an understanding of the sensitivities of siting waste management facilities. To provide some context, an Environmental Assessment (EA) is not required for either the OPF or the MMF, but the County has chosen to apply this methodology and go beyond what would be required to site this important infrastructure – infrastructure that will enable us to effectively and responsibly deliver services to all County residents.

The siting process was developed by Ontario industry-leading experts and included the evaluation of 502 potential sites through a three-screen process, applying over twenty environmental (such as the avoidance of wetlands and floodplains, vulnerable areas under Source Protection, prime agricultural areas, and sensitive receptors) and technical criteria. County landfill properties and willing vendor industrial zoned sites were included in the scope of properties reviewed in the site selection process. This process did not short list any of these sites, with the exception of the property on Highway 93, due to one or a combination of the screening criteria (e.g. size, environmental features such as sensitive groundwater areas, proximity to sensitive receptors). A short list of seven sites was presented for public, Aboriginal, and stakeholder consultation in fall 2015, followed by a detailed comparative evaluation completed by the County's consultant.



Following this exhaustive siting and consultation period, furthering development of a co-located OPF and MMF at 2976 Horseshoe Valley Road West, Springwater, was approved by County Council. This location has many noted advantages, including favourable environmental conditions.

In your letter you noted several concerns related to natural heritage features. Be assured that these projects are being developed by our experienced industry-leading consultants in consultation with the local municipality, conservation authority, and provincial agencies. Numerous studies are currently being undertaken to confirm site conditions, provide justification for development of the OPF and MMF at 2976 Horseshoe Valley Road West, Springwater, and to ensure compliance with municipal and provincial legislation. Of note, field work related to an Environmental Impact Study (EIS) will address concerns related to natural heritage features.

The EIS will continue work that has already been undertaken. In January 2016, the County's consultant conducted on-site work and completed a preliminary assessment of natural heritage features. This initial assessment did not identify any conditions that would preclude development of the facilities. However, additional site investigations involving spring and summer fieldwork are required. These investigations, which are being conducted in consultation with the Nottawasaga Conservation Authority (NVCA), will form the basis of the EIS. This study will outline natural features of the property (including soils, vegetation, wildlife, topography, watercourses/bodies) and the ecological functions they provide. It will review how development of the property may occur with no negative impact to site natural heritage features and their ecological functions.

Please note that on-going consultation, seen as imperative to the success of this project, will continue throughout project development. Also, as has been offered from the outset of this project, staff are available to meet individually with landowners to discuss more specific concerns and questions you may have.

Regards,



Rob McCullough  
Director, Solid Waste Management

cc. Honourable Catherine McKenna, MP, Minister of Environment and Climate Change  
Gerry Marshall, Warden, County of Simcoe  
Terry Dowdall, Deputy Warden, County of Simcoe  
Bill French, County Councillor  
Don Allen, County Councillor  
Mark Aitken, CAO, County of Simcoe  
Debbie Korolnek, General Manager, Engineering, Planning & Environment, County of Simcoe

**From:** CINDY MERCER [[mailto:\[REDACTED\]](#)]

**Sent:** Tuesday, June 14, 2016 3:57 PM

**To:** Warden

**Cc:** Wauchope, Gord; Warnock, Scott; Walma, Steffen; Vanderkruys, Chris; Smith, Jamie; Smith, Brian F.; Small Brett, Mary; [brian.sanderson@simcoe.ca](mailto:brian.sanderson@simcoe.ca); Ross, Mike; Rawson, Bill; O'Donnell, John; Milne, Rick; McKay, Gord A.; Macdonald, Sandie C.; Little, Doug; Leduc, James; Keffer, Rob; Hughes, Harry; Hough, Ralph; Dubeau, Anita; Dollin, Lynn; Cox, Judith; Cornell, George; Cooper, Sandra; Clarke, Basil; Burton, Barry; Burkett, Mike; Bifulchi, Nina; Allen, Don; French, Bill; Dowdall, Terry

**Subject:** MMF/OPF (County of Simcoe)

Warden Gerry Marshall and County Councillors,

I submit to you (attached) a copy of my correspondence in regards to the MMF/OPF facility planned to be built in the forest (Site C136) at 2976 Horseshoe Valley Road West. This letter has been sent to multiple levels of government, environmental groups and other organizations of interest.

Regards,

Cindy Mercer  
Springwater, Ontario  
Please find my letter of correspondence attached.

Thank you,  
Cindy Mercer  
Springwater, Ontario



The Honourable Catherine McKenna MP (Minister of Environment and Climate Change)

Re: Materials Handling and Organic Processing Facilities

I am writing to you with grave concerns of the direction that the County of Simcoe's Council is proceeding with regards to the County Forest (Site C136) at 2976 Horseshoe Valley Road West selected to become the location of a Materials Management Facility (MMF) and an Organics Processing Facility (OPF).

I am one of many concerned and frustrated Springwater residents that have written letters, voiced concerns, attending public consultations and vocally expressed those concerns. My property is immediately adjacent the forest in question and all of the efforts that we have approached the Council with seem to have fallen on deaf ears. It appears the steps that we have taken to inform the Council through their own process have just been a political procedure to allow the County to claim they met their obligations to consult with the public. Now our concerns, comments and attempts to communicate with the County of Simcoe and attempt to have our voices heard on this matter appear to have been filed away in pages upon pages of reports with the expectations that we will just go away and be forgotten.

Please do not brush off my concerns and objections with classifications such as "NIMBY" (Not in My Back Yard). This goes far beyond that and has me questioning the actions of our political leaders and their obligation to our human race. This forest does not have services and infrastructure in place to support an Industrial Facility of this magnitude. The landscape of this area and the forest itself will require countless alterations to incorporate for the high level of Industrial demands that will be placed on it. Why take a healthy forest, functioning as a valuable part of our ecosystem and change it and its characteristics from Agricultural to Industrial? Has Simcoe County simply run out of Industrial Land? That does not appear to be the case at all. In fact, there are many properties that would meet the requirements of the criteria of this facility and are zoned for it. We have tried to bring these forward, but it appears that Council is using our County Forests as cheap real estate with little or no concerns to the impact it will have on the environment or the neighbouring communities.

Why not utilize an Industrial property and create Agricultural characteristics within that property if they so wish? The County of Simcoe could take this opportunity and offer something back to the environment such as creating grassy berms and planting trees in an Industrial area that would otherwise lack these natural characteristics. Actions such as these would certainly be deserving of public and community support. Instead, they are taking a beautiful forest area, which has been identified as an *interior forest* and a *natural corridor*, covering it with pavement (11 acres), then bisecting the entire property by approximately a one mile long highway to carry their trucks in and out of this facility. All the while, indicating to the public that they are only using 11 acres of the 200, when in fact, they are creating an industrial site in a sensitive wetland and forest. Once there and zoned, the prospect of increasing this footprint is evident as possibility of future expansion has already been put forth.

Placing a high-risk Industrial facility into a dense, interior forest jeopardizes not only this forest but its surroundings. A variety of wildlife from deer to the amphibians that breed in the sensitive, wet areas

depend on this forest as *undisturbed habitat*. It is my understanding that property owners are encouraged to preserve and protect our forests and agriculture. The County of Simcoe should be leading by example and I cannot think of a worse example of forest management than defacing an interior forest for this purpose. The responsibility now appears to have fallen in the hands of the community and the public to represent the best interest of this “*Significant Woodland*”. In order to accomplish this the community is forced to hire lawyers, planners and experts at their own expense while the County uses tax payer’s money to defend their actions.

If I’m not mistaken, The County of Simcoe’s best interests are “*For the Greater Good*”. County Council needs to open their minds to the many less environmentally sensitive options available for this venture. I understand that County Council has been proceeding based on the direction provided by the consulting firm hired on their behalf. It is also my understanding that when discussions arose with the consultants as to why they were looking into Agricultural zoned properties, they indicated that the direction for their search came from Council. I commend County Council for their efforts and steps taken towards waste management solutions however moving forward in a socially and environmentally respectful manner requires placing these Industrial Facilities appropriately on Industrial zoned land, not in a forest.

I have attached a 2013 NVCA Willow Creek Subwatershed Health Check report. This forest falls within this subwatershed area and provides many environmental functions including a *natural corridor* and *interior (deep) forest*. This report also provides information on forest conditions (declining), wetland conditions (declining), stream health and ground water information. This forest (site c136) drains toward the Matheson Creek which then flows southwest into the Minesing Wetland.

I am asking that you review this information which will help familiarize you with this forest and act on the concerns of many and on behalf of this sensitive forest that is under ***immediate threat***.

Thank you very much for your valuable time and please feel free to contact me if you have any questions or would like to discuss this letter further.

Cindy Mercer  
1601 Rainbow Valley Road E.  
Phelpston, On. L0L 2K0

*Attachment (1)* NVCA Willow Creek 2013 Subwatershed Health Check Report

2013 NVCA Willow Creek Subwatershed Report (attached)
“The Willow Creek subwatershed supports healthy forest cover including large blocks of deep forest (forest interior), which provides significant habitat for wildlife species that require large areas of undisturbed habitat to thrive.” “Sensitive forest birds, mammals, reptiles and amphibians require deep forest habitat for survival.”
Federation of Ontario Naturalists Cores and Corridors
“One of the most fundamental principles of conservation is that there should be a system of natural (or ‘green’) corridors across the landscape, interspersed with large natural areas (i.e. ecological ‘nodes’). These core and corridor areas provide an inter-connected web of natural habitats. In turn, natural core and corridor habitats are essential to the long-term survival and sustainability of biological diversity and are critical in helping maintain the healthy, natural functions of ecosystems. “

# Nottawasaga Valley Conservation Authority



## Willow Creek

### 2013 Subwatershed Health Check

#### 2013 Health Check Results:

Forest Conditions: Very Good

Wetland Conditions: Very Good

Stream Health: Good

Groundwater Health: Very Good

This Health Check describes the health of forests, wetlands, streams and groundwater within the Willow Creek subwatershed.

It identifies stewardship priorities and programs to improve environmental health. Healthy ecosystems sustain healthy communities – future challenges and opportunities for the watershed community are outlined.



Willow Creek and Matheson Creek are the two main streams in this subwatershed.

Willow Creek arises on the rolling sand loams of the Simcoe Uplands near the hamlet of Edgar. It flows into Little Lake – one of the few natural lakes in the Nottawasaga River watershed – just north of Barrie. The creek then enters a deep, groundwater-rich valley as it flows westward through Midhurst.

Matheson Creek arises along the forested slopes of the Oro Moraine near Craighurst and flows southward through a forested sand plain valley that cuts through the nearby uplands. It converges with Willow Creek northwest of Midhurst.

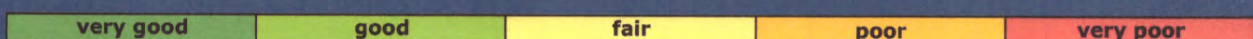


Downstream, Willow Creek flows through agricultural lowlands before entering the Minesing Wetlands west of George Johnston Road (County Road 28). Willow Creek discharges to the Nottawasaga River at the north end of the wetland.

Several small creek systems, the largest of which is Black Creek, arise along the groundwater-rich slopes of the Algonquin Bluffs near Snow Valley (south of Willow Creek). These creeks enter the Minesing Wetlands, joining with Willow Creek downstream of George Johnston Road.

The Nottawasaga Valley Conservation Authority is a public agency dedicated to the preservation of a healthy environment through specialized programs to protect, conserve and enhance our water, wetlands, forests and lands. This Health Check describes the conditions of natural features within the subwatershed, as well as stewardship actions to help maintain the area. Health Checks for the NVCA watershed and subwatersheds can be found online: [www.nvca.on.ca](http://www.nvca.on.ca)

#### Watershed indicators rating scale:





# Forest Conditions

**Status: Very Good**  
**Trend: Declining**

The Willow Creek subwatershed supports healthy forest cover including large blocks of deep forest (forest interior), which provides significant habitat for wildlife species that require large areas of undisturbed habitat to thrive.

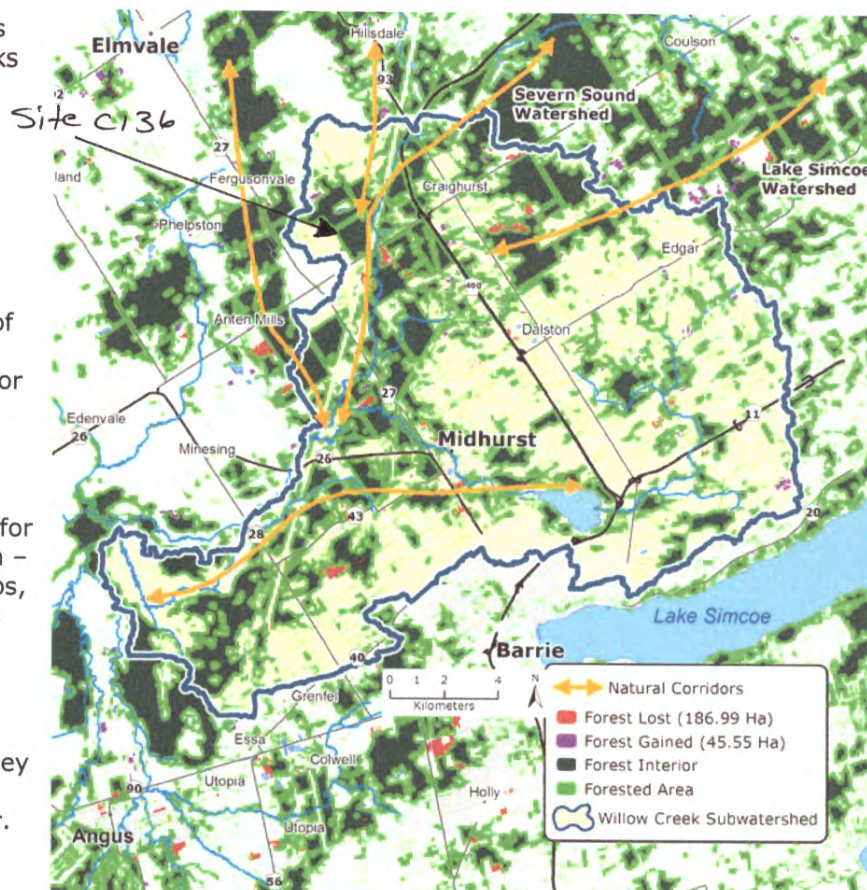
Forest cover is concentrated on the Oro Moraine and Algonquin Bluffs, as well as the Matheson Creek and Willow Creek valley corridors. The rolling sand loams of the Simcoe Uplands to the north and southwest of Little Lake are well-suited for agriculture and therefore support less forest cover.

Marsh and swamp wetlands within the subwatershed provide important habitat for a wide range of wildlife. An extensive fen – an open wetland dominated by low shrubs, ferns and sedges and grasses – supports rare plants and wildlife in the Minesing Wetlands.

Coniferous and mixed forests within the Minesing Wetlands, the Willow Creek valley and the headwaters of Matheson Creek provide important winter habitat for deer.

Subwatershed forest cover provides important linkages to nearby natural areas within the Nottawasaga River, Severn Sound and Lake Simcoe watersheds. This forest cover is also part of a significant natural corridor that extends from the Niagara Escarpment through the Minesing Wetlands and onto the Canadian Shield.

Based on satellite photo interpretation, between 2002 and 2008 there was a net loss in subwatershed forest cover of 141 ha. This represents a 1.1% decrease in forest cover since 2002. Forest loss was generally associated with development activity.



Indicators	Willow Creek Subwatershed	NVCA Watershed	Indicator Description	Trend (2002-2008)
<b>Forest Cover</b>	<b>40.7%</b> (12,473 ha)	<b>32.6%</b>	Forest cover is the percentage of the watershed that is forested. Environment Canada suggests that <b>30% forest cover</b> is the <b>minimum</b> needed to support healthy wildlife habitat; more coverage is beneficial.	↓ -141 ha
<b>Forest Interior</b>	<b>14.8%</b> (4,549 ha)	<b>10.3%</b>	Forest interior is the area of forest that lies more than 100 m from a forest edge – away from the windy, dry conditions and predators that are associated with the edge. Sensitive forest birds, mammals, reptiles and amphibians require deep forest habitat for survival. Environment Canada suggests that <b>10% forest interior cover</b> is the <b>minimum</b> needed to support a range of species.	Insufficient data
<b>Riparian Cover</b>	<b>76.6%</b> (2,172 ha)	<b>64.9%</b>	Streamside forest cover (riparian vegetation) filters pollutants and provides important fish and wildlife habitat. Environment Canada suggests that at least <b>30 m on each side of the stream</b> (over 75% of its length) should be in natural cover to support healthy streams.	Insufficient data

Ratings:

very good

good

fair

poor

very poor



# Wetland Conditions

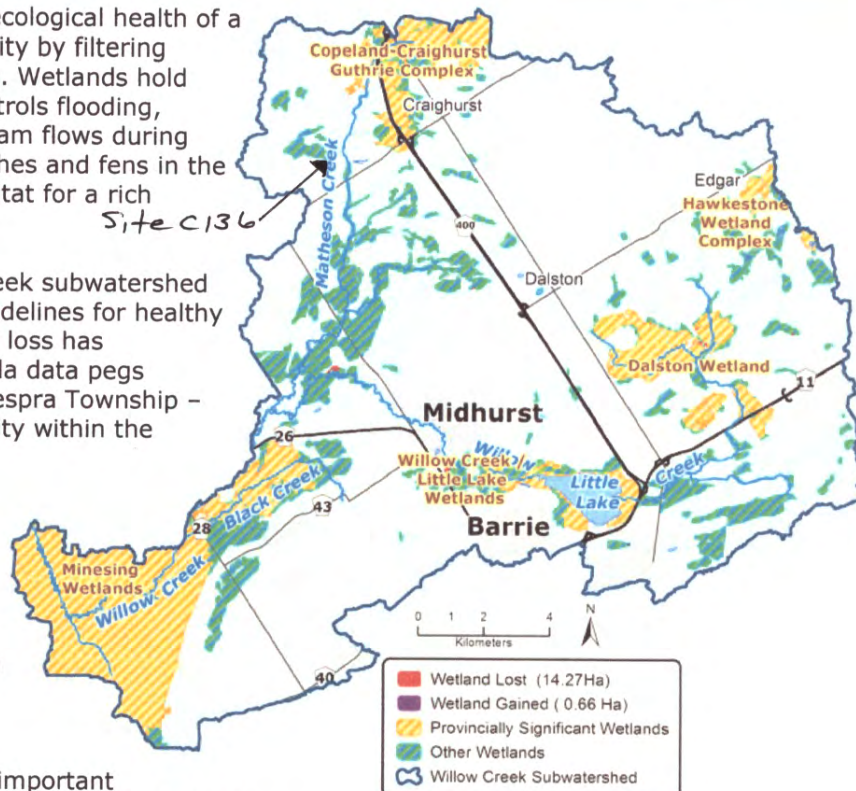
**Status: Very Good**  
**Trend: Declining**

Wetlands play an important role in the ecological health of a subwatershed. They improve water quality by filtering runoff from agricultural and urban areas. Wetlands hold back water on the landscape, which controls flooding, reduces erosion and helps maintain stream flows during dry periods. The wetland swamps, marshes and fens in the Willow Creek subwatershed provide habitat for a rich variety of flora and fauna.


Wetland conditions within the Willow Creek subwatershed meet Environment Canada minimum guidelines for healthy watersheds; however, historical wetland loss has occurred. Recent Ducks Unlimited Canada data pegs historical wetland loss in the (former) Vespra Township – the largest pre-amalgamation municipality within the subwatershed – at 37%.

Based on satellite photo interpretation, between 2002 and 2008 there was a net subwatershed wetland loss of 14 ha. This represents a 0.2% decrease in wetland cover since 2002. Wetland loss was mostly associated with development activity.

The Minesing Wetlands is recognized as internationally significant because of its important ecological, economic and cultural values. Extensive marshes along Willow Creek in Minesing support a rich variety of marsh bird species including the endangered Least Bittern. The Minesing Wetlands provides critical flood control functions for Wasaga Beach, holding back upstream floodwaters for several days and releasing them in a controlled fashion. The Minesing Wetlands is also a great place to go canoeing.



Five other wetland groupings within the Willow Creek subwatershed – Willow Creek/Little Lake Wetlands Complex, Dalston Wetlands Complex, Hawkstone Wetland Complex and the Copeland-Craighurst-Guthrie Wetland Complex – have been identified as provincially significant by the Ontario Ministry of Natural Resources. Provincial and municipal planning policies help protect these wetlands from development and site alteration. A number of unevaluated wetlands could be added to the evaluated Midhurst Swamp and Little Lake wetland complexes.

Indicators	Willow Creek Subwatershed	NVCA Watershed	Indicator Description	Trend (2002-2008)
<b>Wetland Cover</b>	<b>21.2%</b> <b>(6,486 ha)</b>	<b>12.3%</b>	<b>10% wetland cover</b> has been identified as a <b>minimum</b> guideline for healthy watersheds (Environment Canada).	 -14 ha
<b>Wetland Buffer</b> (100m buffer area)	<b>61.7%</b> <b>(2,109 ha)</b>	<b>51.5%</b>	A buffer is a vegetated area next to a wetland or stream. Many wetland wildlife species require nearby upland areas for foraging, nesting and other activities.	Insufficient data

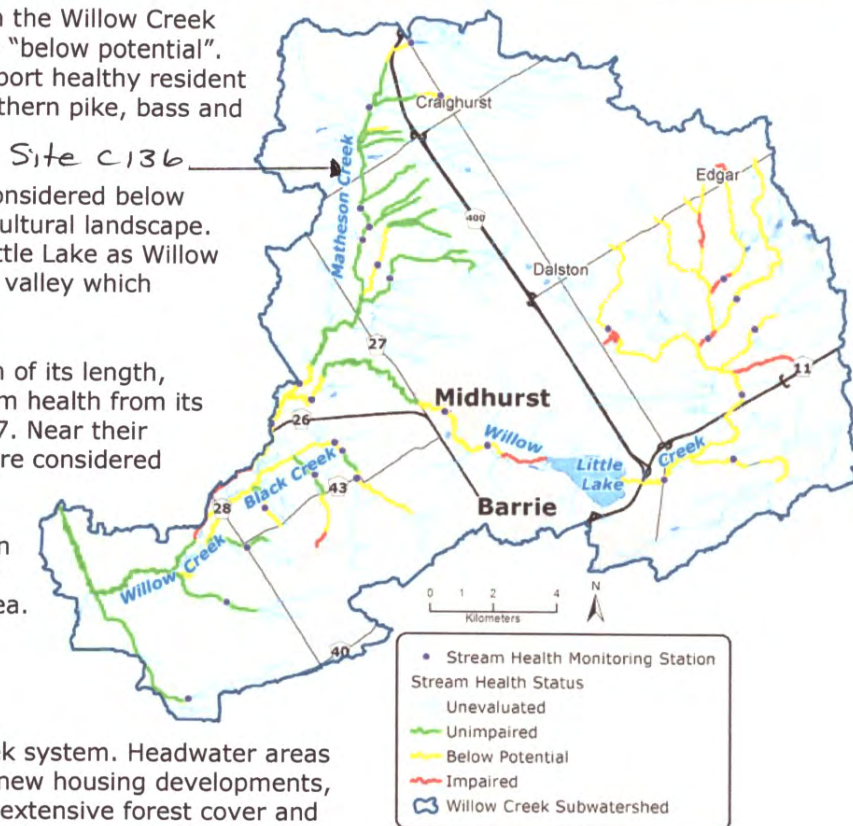




Surface water quality and stream health in the Willow Creek subwatershed is generally “unimpaired” to “below potential”. Sections of both major creek systems support healthy resident trout populations. Little Lake supports northern pike, bass and walleye.

Upstream of Little Lake, Willow Creek is considered below potential as it flows through a rolling agricultural landscape. Stream health improves downstream of Little Lake as Willow Creek enters a forested, groundwater-rich valley which extends downstream through Midhurst.

Flowing through a forested valley for much of its length, Matheson Creek exhibits unimpaired stream health from its headwaters downstream to west of Hwy 27. Near their confluence, Matheson and Willow Creeks are considered below potential, with stream health continuing to decline as Willow Creek enters an agricultural plain. Sparse riparian (streamside) cover and livestock access to the creek impacts stream health in this area. Downstream of George Johnston Road, healthy conditions return as Willow Creek enters the Minesing Wetlands.



Stream health is variable in the Black Creek system. Headwater areas are impacted by agricultural land use and new housing developments, while healthy sections are associated with extensive forest cover and groundwater discharge (springs) along the Algonquin Bluffs. Below potential health conditions are present downstream as the main branch enters the Minesing Wetlands.

Nutrient concentrations (total phosphorus) are moderate in Willow Creek at George Johnston Road during low flow conditions, contributing to below potential stream health. Bacteria levels at George Johnston Road generally exceed the provincial recreational guideline for swimming.

Overall, stream health has remained unchanged since the 2007 report card. Refinements to mapping reflect additional information available from expanded monitoring coverage.

Indicators	Willow Creek Subwatershed	Indicator Description	Trend (2007-2012)
<b>Benthic Grade</b>	<b>2.33</b>	Insects and other “bugs” that inhabit the streambed are excellent indicators of stream health. Healthy streams receive a score of “3” while unhealthy streams receive a score of “1”.	↔
<b>Total Phosphorus</b> (low flow; mg/L)	<b>0.018</b>	Total phosphorus indicates nutrient levels within a stream. Our healthiest streams have levels less than 0.01 mg/L during low flow conditions. During storm events NVCA streams often exceed 0.03 mg/L (Willow Creek range: 0.007–0.105 mg/L). Provincial Water Quality Guidelines suggest that <b>levels greater than 0.03 mg/L result in unhealthy stream conditions.</b>	↔
<b>E. coli</b> (low flow; coliform-forming units/100mL )	<b>112</b>	<i>Escherichia coli</i> bacteria are found in human and animal waste. They naturally occur in our streams but higher levels may indicate fecal contamination. Ontario Recreational Water Quality Guidelines suggest that waters with less than 100 CFU's/100 mL are safe for swimming. <i>E. coli</i> is not closely tied to stream health. <i>This data is presented for general public information only.</i>	Insufficient Data

Ratings:

very good

good

fair

poor

very poor

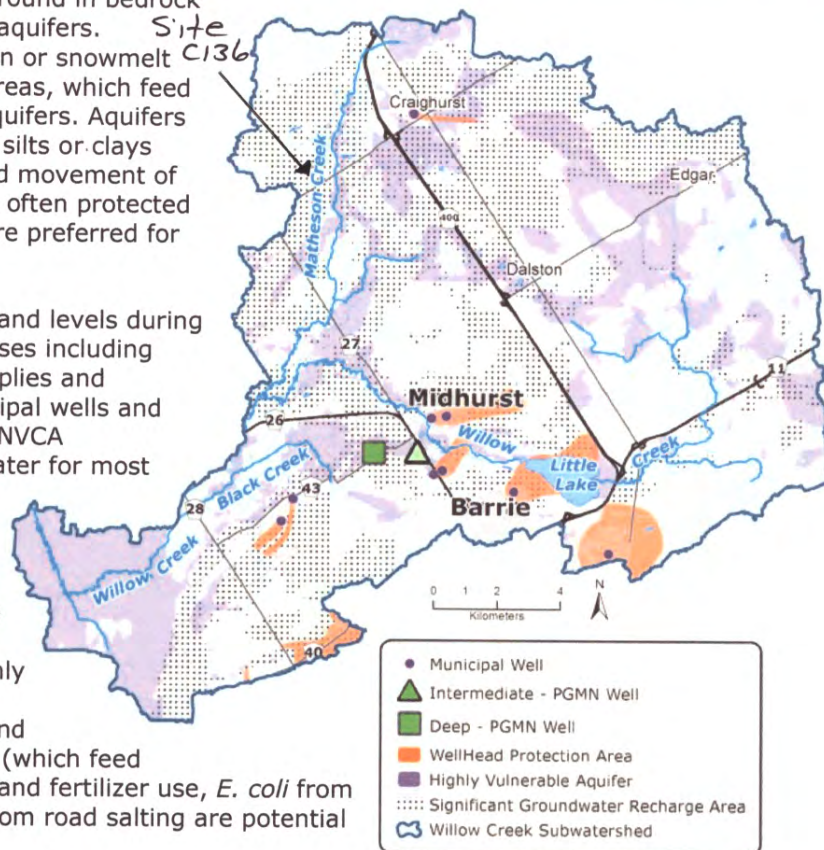




Groundwater is water that is stored underground in bedrock fractures or between sand/gravel grains in aquifers. Groundwater sinks into the ground from rain or snowmelt then moves to spring and seep discharge areas, which feed streams and wetlands, or downward into aquifers. Aquifers may be separated by layers of fine-grained silts or clays (aquitards) that tend to block the downward movement of water. Aquifers located below aquitards are often protected from potential surface contamination and are preferred for drinking water sources.

Groundwater sustains stream flow and wetland levels during dry spells. It supports a variety of human uses including municipal water supplies, private water supplies and agricultural irrigation. More than 130 municipal wells and 10,000 private wells are located within the NVCA jurisdiction. These wells provide drinking water for most watershed residents.

Ontario's Source Water Protection initiative is focused on protecting municipal drinking water sources. Key areas of interest include 1) Wellhead Protection Areas (areas that drain down toward municipal wells), 2) Highly Vulnerable Aquifers (generally where groundwater lies close to ground surface) and 3) Significant Groundwater Recharge Areas (which feed our aquifers). Nitrates from septic systems and fertilizer use, *E. coli* from various sources, and sodium and chloride from road salting are potential sources of contamination.



Through the Provincial Groundwater Monitoring Program (PGMN) partnership with the Ministry of the Environment, the NVCA monitors water levels and water quality in 16 wells within the watershed. Groundwater monitoring began in 2003 and is now being conducted annually. Monitoring data allows the NVCA to track changes in groundwater quantity and quality over time.

Results to date indicate that water quality parameters in all monitoring wells meet Ontario Drinking Water Quality Standards. Groundwater health in the Willow Creek subwatershed is considered very good. Additional data is required to interpret broad groundwater quality trends in the subwatershed.

Indicators	Willow Creek Subwatershed Monitoring Well Results*			Indicator Description
	Shallow (0 wells)	Intermediate (1 well)	Deep (1 well)	
<b>Chloride</b> (mg/L)		<b>93</b>	<b>36.8</b>	Chloride occurs naturally in the environment; however, high concentrations can indicate human impacts (e.g. road salt, landfills). The Canadian guideline for chlorides in drinking water is <b>250 mg/L</b> and is based on aesthetic objectives. Drinking water should not exceed this level.
<b>Nitrite &amp; Nitrate</b> (mg/L)		<b>0.06</b>	<b>0.063</b>	Naturally occurring forms of nitrogen can be found as nitrites and nitrates in groundwater. High concentrations of this element can be related to human activities (e.g. excessive fertilizer application, failing septic systems). The Ontario (and Canada) standard for nitrite and nitrate (as nitrogen) is <b>10 mg/L</b> . Drinking water levels should not exceed this level.
Well types are classified by their depth below ground in meters: Shallow (0-20 m); Intermediate (21-60 m); Deep ( >60m). <b>*Results reflect health at the well and should not replace testing at private wells.</b> Trends for groundwater health will be presented in the 2018 Health Checks (8-10 years of data is required to analyze trends).				





*Watershed Stewardship is the responsible and sustainable care of our natural resources and wildlife within a watershed. As caretakers of our environment, we need to implement stewardship practices that protect and restore natural resources.* (Conservation Ontario)

Site C136  
Frederic Tract

Almost **96% of land in our watersheds is privately owned.** We all depend on good private land stewardship to achieve healthy waters and sustainable ecosystems. To help landowners protect the environment, the NVCA provides a range of technical assistance and grant incentives to help offset the cost of projects on private lands. Grant rates for the various NVCA programs range from 25% to 95% of eligible project costs.

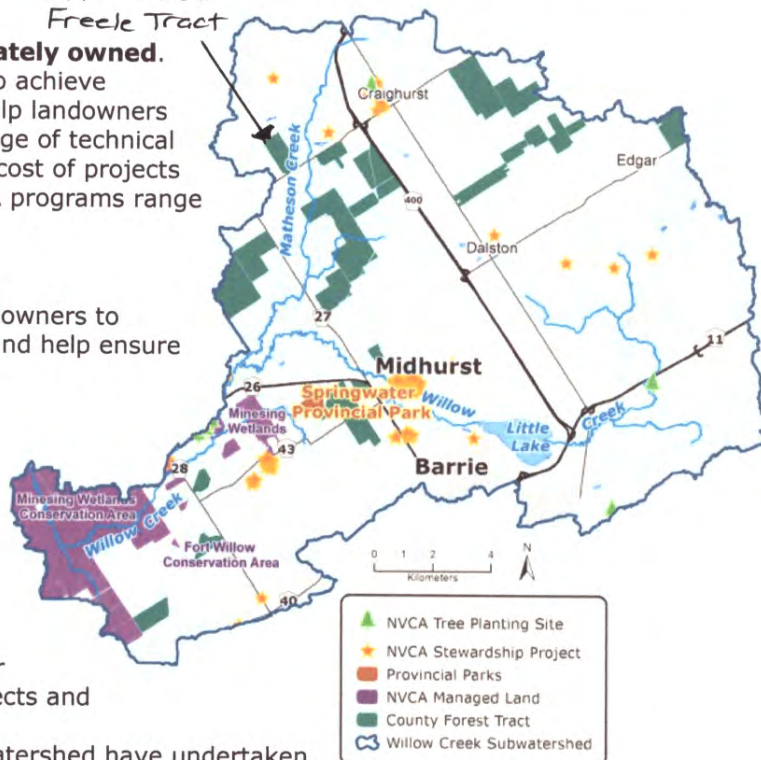
### STEWARDSHIP PROGRAMS

The NVCA's stewardship programs encourage landowners to undertake projects that restore our environment and help ensure the future of our healthy waters.

The NVCA's **Forestry Program** provides trees, planting services and forest management advice for landowners throughout the watershed. Since 2002, landowners in the Willow Creek subwatershed have helped plant **26,175 trees**, reforesting **15 ha**.

The NVCA's **Healthy Waters Program** provides landowners with technical and financial support for eligible projects, such as water improvement projects and strategic river habitat restoration.

Since 2002, landowners in the Willow Creek subwatershed have undertaken **154 stewardship projects** on their properties through the support of this program. These projects have stabilized streambanks, improved fish and wildlife habitat, and decreased nutrient runoff – and have kept literally trillions of *E. coli* bacteria from reaching our streams and lakes.



### PUBLIC LANDS MANAGEMENT

The NVCA's **Conservation Lands Program** focuses on acquiring lands for the long-term protection of significant natural features and functions. To date, within the Innisfil Creek subwatershed, the NVCA manages two properties totaling 84 ha.

**County Forests** are managed for a variety of environmental, social and economic purposes. Twenty-one Simcoe County Forest tracts, totaling 2,039 ha, lie within the Willow Creek subwatershed. The Hendrie Tract (1922) was the first County forest in Ontario.

**Ontario Parks'** mandate is "to protect significant natural and cultural resources in a system of parks and protected areas that is sustainable and provides opportunities for inspiration, enjoyment and education: now and for future generations." Ontario Parks manages one park area (48 ha) within this subwatershed.

Many **local municipalities** also acquire and manage lands in the public trust.

### Congratulations to our Watershed Stewards in the Willow Creek Subwatershed!

Students from Stayner Collegiate Institute and St. Josephs Catholic High School have been donning waders with great enthusiasm to help restore a straightened reach of Willow Creek. Students installed coniferous trees into the margins of the creek to form wedge shaped 'wing deflectors' to redirect the current to a more natural meandering pattern and create varied habitat. Their efforts, combined with the river's natural processes, speed its restoration.

**This is only one of the many community champions that are helping to improve subwatershed health!**





Forest, wetland and stream conditions in the Willow Creek subwatershed are generally healthy. There are significant stewardship opportunities to improve water quality in degraded portions of the subwatershed and to restore natural channel features where watercourses have been altered in the past. These actions will improve fish habitat as well as water quality. Achieving subwatershed stewardship goals will also contribute to improved water quality further downstream in the Nottawasaga River.

### Healthy Waters Depend on All of Us

#### Key Actions to Improve Habitat & Water Quality:

- Protect and create stream and wetland “buffers” – areas of natural vegetation between the water and adjacent land use practices
- Plant trees along streamsides and stabilize eroding stream banks
- Implement agricultural best management practices to reduce nutrient, sediment and bacteria runoff
- Reduce the spread of invasive species and pathogens

#### Urban Water Quality & Quantity:

- Conserve water in the home and garden
- Use rain barrels, mulch and rain gardens
- Reduce or stop use of fertilizers
- Don't pour anything down storm drains – these drains often flow untreated into local water bodies

#### Habitat Enhancement:

- Plant native trees, shrubs, wildflowers and grasses to support birds, butterflies and other wildlife
- Learn to identify and remove invasive species

#### Protect Your Drinking Water – Well & Septic Care:

- Decommission unused wells to prevent surface contaminants from reaching groundwater
- Test your well for bacteria at least 3 times per year (your local health unit provides **free** testing)
- Regularly service your septic system (every 2 to 5 years) and avoid using products that kill beneficial bacteria, which aids in the breakdown of septic waste

#### Agricultural Best Management Practices:

- Upgrade manure storages and divert clean water from pastures and barn yards with eaves and berms
- Improve stream health by fencing out livestock
- Buffer streams from cropland and pasture (5-30m)
- Reduce soil erosion through conservation tillage, residue management and use of cover crops
- Reduce nutrient runoff (and save money) by implementing nutrient management planning
- Use water conservation measures and work with neighbours to coordinate water takings
- Minimize pesticide use wherever possible

### How You Can Make a Difference

- Undertake stewardship projects on your property
- Volunteer at community stream and habitat restoration work days and events
- Participate in citizen science (e.g. amphibian and breeding bird monitoring)
- Donate funds for land conservation or habitat and water improvement projects
- Step into nature – check out our interactive conservation area guide at [nvca.on.ca](http://nvca.on.ca)
- Join a local 'Friends of' or Field Naturalist group
- Attend community workshops – learn about your local environment
- Manage your forest and receive tax benefits – check out the Managed Forest Tax Incentive Program
- Donate your lands as a living legacy – contact the NVCA to learn more
- Stay informed about upcoming events – check us out on Facebook and Twitter







### Our Watershed Ecosystems Benefit Us All

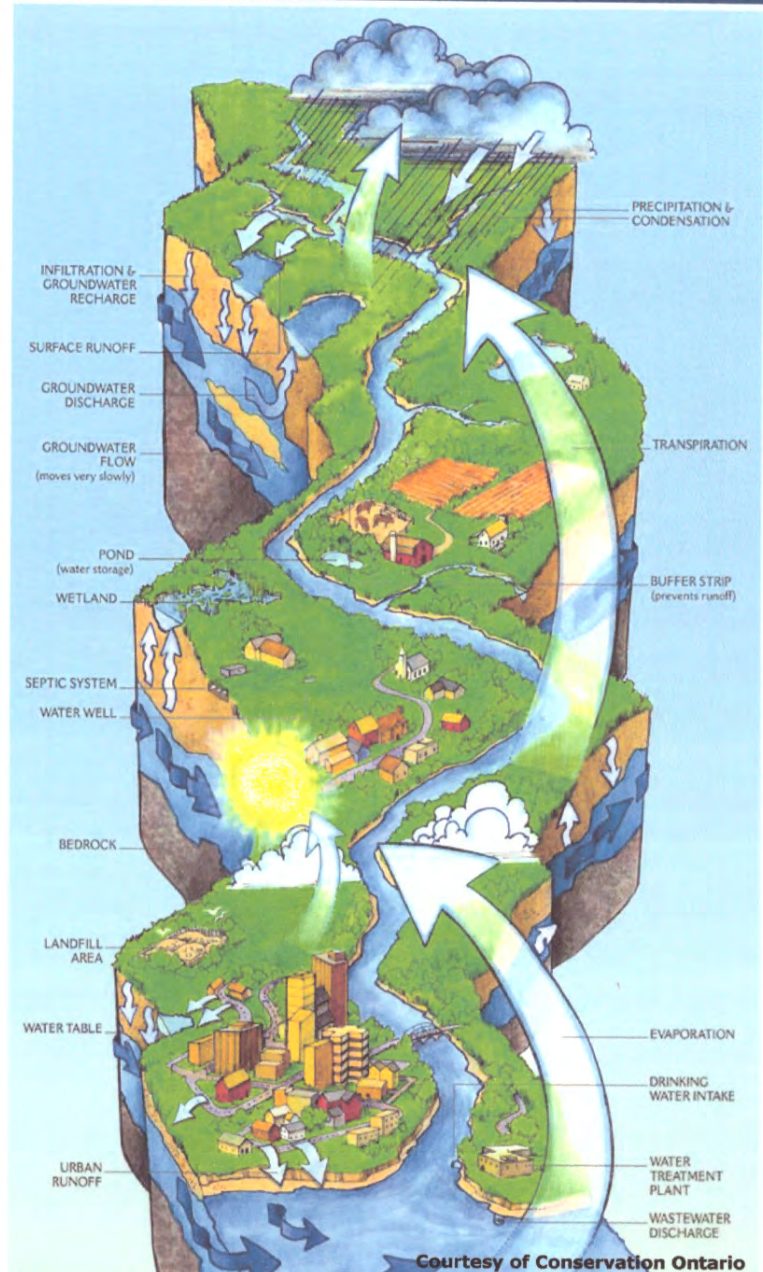
A healthy natural heritage and water resource system is the foundation of a high quality sustainable community. Often these services are overlooked and undervalued. The ecosystem services provided by our lands and waters include:

- healthy agriculture
- clean drinking water
- waste assimilation
- fish and wildlife habitat
- climate stabilization
- flood and erosion control
- forest products
- spiritual and inspirational values
- recreation and ecotourism

Ecosystem services will become even more important as urban growth continues in our watershed communities. This will bring large numbers of new people into our community with expectations for healthy landscapes and streams, clean drinking water and opportunities for recreation.

New growth represents challenges and opportunities for us as a watershed community. Water resources, including stormwater and wastewater, must be carefully managed in urbanizing areas to ensure that the health of our rivers, stream and lakes is protected. Development must be planned to ensure it is safe from flooding and erosion hazards. Interconnected forests, wetlands and streams are needed to maintain water quality as well as the variety of life on our landscape.

Community stewardship will continue to be an important tool to restore subwatershed health. Through innovative planning and wise stewardship, we can sustainably manage our local streams, lakes and natural areas for the benefit of present and future generations.



### THANK YOU!

Thanks to all of our Watershed Champions – landowners, community groups, schools, businesses, municipalities and other government agencies – who support stewardship activities in our watershed!

**For more information or to get involved, contact the NVCA at (705)424-1479 or [www.nvca.on.ca](http://www.nvca.on.ca)**

A member of:



### Partner Municipalities in the Willow Creek Subwatershed:

Township of Springwater, City of Barrie,  
Township of Oro-Medonte

**"Working Together to Protect and Restore"**







**County of Simcoe  
Solid Waste Management**  
1110 Highway 26,  
Midhurst, Ontario L0L 1X0

Main Line (705) 726-9300  
Toll Free 1-866-893-9300  
Fax (705) 726-9832  
simcoe.ca



July 20, 2016

Ms. Cindy Mercer  
1601 Rainbow Valley Road East  
Phelpston, Ontario  
L0L 2K0

**RE: County of Simcoe – Solid Waste Management Infrastructure Projects  
2976 Horseshoe Valley Road West, Springwater**

Dear Ms. Mercer:

We wish to acknowledge receipt of your correspondence (sent via e-mail to Warden Gerry Marshall on July 8, 2016) in regard to two County of Simcoe Solid Waste Management infrastructure projects – an Organics Processing Facility (OPF) and Materials Management Facility (MMF) – proposed for development at 2976 Horseshoe Valley Road West, Springwater. The Warden has forwarded your correspondence to staff to review and provide a response.

Given the complexity and technical nature of this project, correspondence received in regard to these projects is forwarded to Solid Waste Management for review and inclusion in the project file. Previous correspondence received during siting and following release of the preferred site was included in two staff reports presented to County Council (Items CCW 16-054 and CCW 16-191) and made available on the public agenda. In addition, these reports can be found on the project webpages. For your records, we have attached a summary of where you can locate your previous correspondence in those reports. Note that correspondence sent to the Warden and County Council on these projects will continue to be addressed in this manner.

Continued consultation with neighbouring landowners will be important to development of these projects. We understand that you have questions – and as project development continues, we will provide information as it becomes available. Studies being undertaken this summer, for example, will provide additional information on traffic, natural heritage features, and environmental conditions at this location. Questions and comments received at the neighbouring landowner meeting and Public Information Sessions held in March and April were helpful in preparation of the Terms of Reference for these studies. This work will now take a period of months to complete as it involves comprehensive field work, consultation with various agencies such as the Nottawasaga Valley Conservation Authority (NVCA), and technical analysis. Should you have questions in the interim about these studies or the field work being undertaken, please let me know.

A neighbouring landowner meeting is being planned for early September as an opportunity to discuss the procurement of the Organics Processing Facility and, in addition, to provide an update on the studies. Meetings like this – undertaken at key milestones in the project – will allow us to relay information as it is made available from our consultants. It is our intention that these meetings are productive and undertaken in a meaningful manner throughout the process.

Regards,



Rob McCullough  
Director, Solid Waste Management

cc.      Gerry Marshall, Warden, County of Simcoe  
         Terry Dowdall, Deputy Warden, County of Simcoe  
         Bill French, County Councillor  
         Don Allen, County Councillor  
         John Daly, Director, Legislative Services/Clerk, County of Simcoe  
         Mark Aitken, CAO, County of Simcoe  
         Debbie Korolnek, General Manager, Engineering, Planning & Environment, County of Simcoe

**From:** CINDY MERCER [mailto:[REDACTED]]  
**Sent:** Friday, July 08, 2016 12:07 PM  
**To:** Warden <Warden@simcoe.ca>; Daly, John <John.Daly@simcoe.ca>  
**Cc:** Catherine.McKenna@parl.gc.ca; Dowdall, Terry <Terry.Dowdall@simcoe.ca>; French, Bill <Bill.French@simcoe.ca>; Allen, Don <Don.Allen@simcoe.ca>; Aitken, Mark <Mark.Aitken@simcoe.ca>; Korolnek, Debbie <Debbie.Korolnek@simcoe.ca>; Mack, Stephanie <Stephanie.Mack@simcoe.ca>; McCullough, Rob <Rob.McCullough@simcoe.ca>  
**Subject:** Re: Response to Ms. Mercer's letter dated June 14th, 2016

Hello Mr. Marshall,  
Please find my response letter attached.

Sincerely,

Cindy Mercer  
1601 Rainbow Valley Road E.  
Phelpston, On. L0L 2K0  
[REDACTED]

CONFIDENTIALITY NOTICE

NOTICE: This message is intended for the use of the individual or entity to which it is addressed and may contain information that is confidential, privileged and exempt from disclosure under applicable law. If the reader of this message is not the intended recipient, you are hereby notified that any printing, copying, dissemination, distribution, disclosure or forwarding of this communication is strictly prohibited. If you have received this communication in error, please contact the sender immediately and delete it from your system. Thank You.

On Tuesday, June 28, 2016 2:17 PM, "McCullough, Rob" <[Rob.McCullough@simcoe.ca](mailto:Rob.McCullough@simcoe.ca)> wrote:

Hello Ms. Mercer,  
I've been requested by the Warden to provide a response to your letter of June 14, 2016. Please find this response letter attached.

Sincerely,

Rob McCullough  
Director, Solid Waste Management  
Email: [rob.mccullough@simcoe.ca](mailto:rob.mccullough@simcoe.ca)  
Phone: (705) 726-9300 ext. 1192  
Cell: (705) 718-4716  
Fax: (705) 726-9832

\*\*\*\*\* CONFIDENTIALITY NOTICE\*\*\*\*\*

This electronic transmission and any accompanying attachments may contain privileged or confidential information intended only for use of the individual(s) or organization(s) named above. Any distribution, copying or action taken in reliance on the contents of this communication by anyone other than the intended recipient(s) is STRICTLY PROHIBITED by the County of Simcoe.  
If you receive this communication in error, please notify the sender at the above email address and delete this email immediately.

July 8, 2016

County of Simcoe  
1110 Highway 26  
Midhurst, Ontario  
L0L 1X0

Re: Proposed Waste Management Infrastructure Project 2976 Horseshoe Valley Road West

Attention Warden Marshall and Members of Council:

I am writing this letter in response to the letter I received on your behalf from Rob McCullough dated June 28, 2016. I have taken the liberty of copying this letter to the same parties copied in Mr. McCullough's letter as well as some additional parties of interest as I believe this could be a common denominator required to generate a response from you, Warden Marshall.

I find it quite peculiar that the one letter I wrote *not* addressed to you and your fellow Councilors appears to be the letter that finally initiated a response. Not a direct response, but a response directed through your subordinate on your behalf. Although the letter has the appearance of a template and likely resembles similar dictated responses sent out to other concerned constituents, I suppose it is a response none the less and is worthy (on paper) as claim that you are listening and responding to the concerned citizens of Simcoe County.

Since the selection of the "preferred site" there has been *one* meeting that was held on March 23, 2016 for the immediate 500 meter landowners to discuss more specific concerns and questions. Countless questions were asked at that meeting and many legitimate concerns were raised but *very* few answers were provided. Instead, deferred to be answered by the consulting firm hired on the County's behalf (*not in attendance*) at the next public meeting. On April 19, 2016, almost one month later, the one-day public sessions were held with representatives from the consulting firm present. To the disappointment of many, the consultants did not have properly prepared answers or responses to the questions and concerns raised during the previous landowner's meeting. It appeared it was up to the individuals to seek out and pose the same questions and concerns over again, this time on a public level with time restraints and many distractions of a busy public meeting. Understandably so, there were many other people in attendance at the public meetings requiring the consultants time for the purpose of raising *their own legitimate concerns*.

I appreciate that your letter offered for county staff to meet individually with landowners to discuss more specific concerns and questions. However, a room full of landowners at the March 23, 2016 meeting very clearly requested and were denied the formation of a community monitoring committee which would have complimented this purpose quite nicely. Ironically, I believe the staff you have offered to make available to meet with for discussions are the *same* staff that recommended *against* the formation of a community monitoring committee. The actions of the County staff and the lack of communication from County Council has made it apparently clear to me that communications between the public and the County is nothing more than a procedural task to meet minimum requirements.



The public understands and appreciates that County Council has undergone a long siting process. On the plus side, this has also generated a number of suitable sites that were perhaps not available for inclusion at the commencement of the siting process. *"For the greater good"*, County Council should consider it their duty to allow for serious consideration of current site locations now available for the OPF/MMF.

County Council has the power to spare this peaceful County forest tract from Industrialization. There are a growing number of concerned citizens in Simcoe County and beyond monitoring the actions of County Council through this process. Lead by example and show the good people of Simcoe County that you will do the *right* thing and place these facilities in a suitably zoned area - **not in our County Forests.**

Please feel free to contact me should you care to discuss additional suitable sites available for review.

Cindy Mercer  
1601 Rainbow Valley Road E.  
Phelpston, On. L0L 2K0  
[REDACTED]



**County of Simcoe  
Solid Waste Management**  
1110 Highway 26,  
Midhurst, Ontario L0L 1X0

Main Line (705) 726-9300  
Toll Free 1-866-893-9300  
Fax (705) 726-9832  
[simcoe.ca](http://simcoe.ca)



July 13, 2016

Ms. Céline Laurin  
1205 Baseline Road  
Phelpston, Ontario  
L0L 2K0

**RE: County of Simcoe – Solid Waste Management Infrastructure Projects  
2976 Horseshoe Valley Road West, Springwater**

Dear Ms. Laurin:

We wish to acknowledge receipt of your correspondence (sent via e-mail to Warden Gerry Marshall on June 26, 2016) in regard to two County of Simcoe Solid Waste Management infrastructure projects – an Organics Processing Facility (OPF) and Materials Management Facility (MMF) – currently proposed for development at 2976 Horseshoe Valley Road West, Springwater. As a neighbouring landowner, we understand that you have questions regarding the development of these facilities. The Warden has forwarded your correspondence to staff to provide a response.

The County of Simcoe is committed to being environmental leaders and supporting infrastructure projects such as these that reflect our commitment to diversion, reducing garbage, and securely managing our own transfer and processing capacity. During project development, we have taken numerous steps to share information with the public and allay apprehension of near-neighbours, with an understanding of the sensitivities of siting waste management facilities. To provide some context, an Environmental Assessment (EA) is not required for either the OPF or the MMF, but the County has chosen to apply this methodology and go beyond what would be required to site this important infrastructure – infrastructure that will enable us to effectively and responsibly deliver services to all County residents.

The siting process was developed by Ontario industry-leading experts and included the evaluation of 502 potential sites through a three-screen process, applying over twenty environmental (such as the avoidance of wetlands and floodplains, vulnerable areas under Source Protection, prime agricultural areas, and sensitive receptors) and technical criteria. County landfill properties and willing vendor industrial zoned sites were included in the scope of properties reviewed in the site selection process. This process did not short list any of these sites, with the exception of the property on Highway 93, due to one or a combination of the screening criteria (e.g. size, environmental features such as sensitive groundwater areas, proximity to sensitive receptors). A short list of seven sites was presented for public, Aboriginal, and stakeholder consultation in fall 2015, followed by a detailed comparative evaluation completed by the County's consultant. Following this exhaustive siting and consultation period, furthering development of a co-located OPF and MMF at 2976 Horseshoe Valley Road West, Springwater, was approved by County Council. This location has many noted advantages, including favourable environmental conditions.

In your letter you stated concerns related to natural heritage features, safety, and the associated costs of developing these facilities. Be assured that these projects are being developed by our experienced consultants in consultation with the local municipality, conservation authority, and provincial agencies. Numerous studies are currently being undertaken to confirm site conditions, provide justification for development of the OPF and MMF at 2976 Horseshoe Valley Road West, Springwater, and to ensure compliance with municipal and provincial legislation. Of note, an Environmental Impact Study (EIS) will outline natural features of the property (including soils, vegetation, wildlife, topography, watercourses/bodies) and the ecological functions they provide.

These site-specific studies will also allow for further refinement of estimated costs to develop the MMF and OPF at this location. Updated costing for the MMF and a preliminary business case for the OPF will be presented to County Council in early 2017. With the full procurement process completed for the OPF, a final business case is anticipated to be presented in 2018 for direction. This business case will consider environmental full cost accounting methodologies – commonly referred to as the “triple bottom line” approach. The social, environmental, and financial aspects of the project will be considered for a more comprehensive study on the net benefits of this infrastructure.

Please note that on-going consultation, seen as imperative to the success of this project, will continue throughout project development. The next opportunity for consultation will be in September with discussion on the procurement of organics processing technology. Also, as has been offered from the outset of this project, staff are available to meet individually with landowners to discuss more specific concerns and questions you may have. I have enclosed business cards for myself and Stephanie Mack, Special Projects Supervisor, with all contact information.

Regards,



Rob McCullough  
Director, Solid Waste Management

cc. Gerry Marshall, Warden, County of Simcoe  
Terry Dowdall, Deputy Warden, County of Simcoe  
Bill French, County Councillor  
Don Allen, County Councillor  
Mark Aitken, CAO, County of Simcoe  
Debbie Korolnek, General Manager, Engineering, Planning & Environment, County of Simcoe

**From:** Céline Laurin [[mailto:\[REDACTED\]](mailto:[REDACTED])]  
**Sent:** Sunday, June 26, 2016 8:36 AM  
**To:** Daly, John; Warden  
**Cc:** [yvonne.aubichon@springwater.ca](mailto:yvonne.aubichon@springwater.ca); French, Bill; Allen, Don; [jennifer.coughlin@springwater.ca](mailto:jennifer.coughlin@springwater.ca); [jack.hanna@springwater.ca](mailto:jack.hanna@springwater.ca); [katy.austin@springwater.ca](mailto:katy.austin@springwater.ca); [perry.ritchie@springwater.ca](mailto:perry.ritchie@springwater.ca); Springwater Citizen  
**Subject:** Proposed OPF and MMF facilities - Site C-136

Attention Warden Marshall and Members of Council

County of Simcoe

1110 Highway 26

Midhurst, Ontario

L0L 1X0

e-mail: [Warden@simcoe.ca](mailto:Warden@simcoe.ca)

Sir:

Re: Proposed Waste Management Infrastructure Project

This letter is in regards to the proposed OPF and MMF project that is slated for 2976 Horseshoe Valley Road West, also known as Site C-136. Please be assured that mine is only one of many voices that are rising in opposition to this plan.

Before buying this particular property, we did our research, choosing between two forested properties, and selecting this one for many reasons. This area was close to Barrie, and we loved that Matheson Creek ran through it. This had actually become a hindrance to the Templeton Investment Group who had planned to create a subdivision on this property. Thanks to Matheson Creek, which is environmentally protected, this firm was forced to sell, and we were able to take advantage of a relatively low selling price. Since purchasing our property, we have since put it through Forest Management, and take great care to maintain and preserve the many species of trees that we have.

Along with all of these reasons, the most important was that there was a Simcoe County forest close by. We'd come to learn that Simcoe County forests were among the most well-maintained and protected forests in Ontario, having become self-sustained because of decades of outstanding management and strong attention to the preservation of its native species.

My family and I bought our property in 1998, just months after moving to Angus from a little town called St-Charles, near Sudbury. I grew up in the country, surrounded by beautiful woodland, and couldn't imagine not seeing my children grow up breathing clean air, and enjoying the calm and quiet of the forest. My father helped us build our house in the summer and fall of 1999. During this time, we lost my nephew tragically, and two years later, my father passed away of cancer. You can imagine the emotional attachment we have to this home.

Emotions aside, we learned of the plan for these facilities at the end of summer 2015, and have since become actively involved in gathering information, and informing ourselves, and our friends and family about this project. Our research has revealed alarming details of the potential disasters that these facilities could engender, many of which you are certainly aware.

With all of the information gathered by many individuals, most of whom are not trained in municipal affairs, it is truly appalling that this forest – an agriculturally-zoned forest located next to an organic food focused store in one of the most scenic areas in the region – has been deemed the most suitable location for this project is simply nonsensical.

Along with my neighbours, and many other citizens, I, too, am appalled that the men and women elected to represent my interests, and those of my family, have chosen to move forward with the rezoning and subsequent destruction of another of our precious forests.

Along with my neighbours, and many other citizens, I, too, applaud the County of Simcoe's initiative to assure locally produced waste is dealt with locally. I do agree that cost to taxpayers is to be considered. The true impact of siting this facility in the forest in heart of tourist and recreational traffic has not been weighted.

The County has spent approximately one million dollars in this process to date. Industrial land is available and would not require the continued costs of developing site, service and access. The dollars that have been already spent are of little consequence if they can put towards having proven that such facilities are not suitable for a County forest, but rather for an already industrialized site.

It is time to listen and acknowledge what the people of Simcoe County want. Please leave our forests for the enjoyment of the families and taxpayers, and to future generations. Don't allow the decimation of forests to become your legacy. Instead, make the logical and ethical choice, and choose a site already zoned industrial.

Yours truly,

Céline Laurin

Simcoe County Resident

1205 Baseline Rd

Phelpston, ON L0L 2K0



**County of Simcoe  
Solid Waste Management**  
1110 Highway 26,  
Midhurst, Ontario L0L 1X0

Main Line (705) 726-9300  
Toll Free 1-866-893-9300  
Fax (705) 726-9832  
[simcoe.ca](http://simcoe.ca)



July 22, 2016

Krista and Derrick MacIsaac  
1099 Fox Farm Road  
Phelpston, Ontario  
L0L 2P0

**RE: County of Simcoe – Solid Waste Management Infrastructure Projects  
2976 Horseshoe Valley Road West, Springwater**

Dear Mr. and Mrs. MacIsaac:

We wish to acknowledge receipt of your correspondence (sent via e-mail to John Daly, Director, Legislative Services/Clerk on June 29, 2016) in regard to two County of Simcoe Solid Waste Management infrastructure projects – an Organics Processing Facility (OPF) and Materials Management Facility (MMF) – currently proposed for development at 2976 Horseshoe Valley Road West, Springwater. As a landowner in this area, we understand that you have questions regarding the development of these facilities. Mr. Daly has forwarded your correspondence to staff to provide a response, noting that your letter will be included in a forthcoming staff report providing a summary of correspondence recently received on the projects.

The County of Simcoe is committed to being environmental leaders and supporting infrastructure projects such as these that reflect our commitment to diversion, reducing garbage, and securely managing our own transfer and processing capacity. During project development, we have taken numerous steps to share information with the public and allay apprehension of near-neighbours, with an understanding of the sensitivities of siting waste management facilities. To provide some context, an Environmental Assessment (EA) is not required for either the OPF or the MMF, but the County has chosen to apply this methodology and go beyond what would be required to site this important infrastructure – infrastructure that will enable us to effectively and responsibly deliver services to all County residents.

The siting process was developed by Ontario industry-leading experts and included the evaluation of 502 potential sites through a three-screen process, applying over twenty environmental (such as the avoidance of wetlands and floodplains, vulnerable areas under Source Protection, prime agricultural areas, and sensitive receptors) and technical criteria. County landfill properties and willing vendor industrial zoned sites were included in the scope of properties reviewed in the site selection process. A short list of seven sites was presented for public, Aboriginal, and stakeholder consultation in fall 2015, followed by a detailed comparative evaluation completed by the County's consultant. Following this exhaustive siting and consultation period, furthering development of a co-located OPF and MMF at 2976 Horseshoe Valley Road West, Springwater, was approved by County Council. This location has many noted advantages, including favourable environmental conditions.

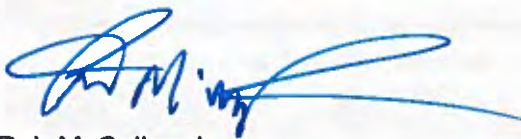


In your letter you stated concerns related to where waste is generated in the County. Note that this was a consideration in the siting process for the MMF, a location where waste from multiple collection vehicles will be consolidated for shipment to other disposal or processing locations. The search area encompassed lands within Springwater, Oro-Medonte, Innisfil, Essa, and Clearview and was based on the center of waste generation which considered not only the number of households in areas throughout the County but minimization of travel distance. Transportation efficiencies are important for the MMF as curbside collection vehicles must collect waste throughout the County but be able to return to the transfer location and discharge in a timely manner at the end of the day.

Numerous studies are now being undertaken to confirm site conditions, provide justification for development of the OPF and MMF at 2976 Horseshoe Valley Road West, Springwater, and to ensure compliance with municipal and provincial legislation. Of note, an Environmental Impact Study (EIS) will outline natural features of the property (including soils, vegetation, wildlife, topography, watercourses/bodies) and the ecological functions they provide. Site-specific studies will also allow for further refinement of estimated costs to develop the MMF and OPF at this location. Updated costing for the MMF and a preliminary business case for the OPF will be presented to County Council in early 2017. With the full procurement process completed for the OPF, a final business case is anticipated to be presented in 2018 for direction. The social, environmental, and financial aspects of the project will be considered for a more comprehensive study on the net benefits of this infrastructure.

Please note that on-going consultation, seen as imperative to the success of this project, will continue throughout project development. The next opportunity for consultation will be in September with discussion on the procurement of organics processing technology. Also, as has been offered from the outset of this project, staff are available to meet individually with landowners to discuss more specific concerns and questions you may have. I have enclosed business cards for myself and Stephanie Mack, Special Projects Supervisor, with all contact information.

Regards,



Rob McCullough  
Director, Solid Waste Management

cc.     Gerry Marshall, Warden, County of Simcoe  
         Terry Dowdall, Deputy Warden, County of Simcoe  
         Bill French, County Councillor  
         Don Allen, County Councillor  
         Mark Aitken, CAO, County of Simcoe  
         Debbie Korolnek, General Manager, Engineering, Planning & Environment, County of Simcoe

**From:** Krista Elliott [<mailto:> ]  
**Sent:** Wednesday, June 29, 2016 1:46 PM  
**To:** Daly, John <[John.Daly@simcoe.ca](mailto:John.Daly@simcoe.ca)>; [yvonne.aubichon@springwater.ca](mailto:yvonne.aubichon@springwater.ca)  
**Cc:** Springwater Citizen <[friendsofsimcoeforests@gmail.com](mailto:friendsofsimcoeforests@gmail.com)>; French, Bill <[bill.french@springwater.ca](mailto:bill.french@springwater.ca)>; Allen, Don <[don.allen@springwater.ca](mailto:don.allen@springwater.ca)>; [jennifer.coughlin@springwater.ca](mailto:jennifer.coughlin@springwater.ca); [jack.hanna@springwater.ca](mailto:jack.hanna@springwater.ca); [katy.austin@springwater.ca](mailto:katy.austin@springwater.ca); [perry.ritchie@springwater.ca](mailto:perry.ritchie@springwater.ca)  
**Subject:** Concerns

As attached.

June 29, 2016

Attention Warden Marshall and Members of Council  
County of Simcoe  
1110 Highway 26  
Midhurst, Ontario  
L0L 1X0  
e-mail: [Warden@simcoe.ca](mailto:Warden@simcoe.ca)

Sir/Madamme,

Re: Proposed Waste Management Infrastructure Project  
2976 Horseshoe Valley Road West

I choose to live in Simcoe County because I believed this county valued forests, farms, recreation, tourism and greenspace.

I am appalled that the men and women I elected to represent me have betrayed that trust by voting to move forward with the rezoning and destruction of one of our precious forests. Not only have you shown your disregard for this forest but three other forest sites were shortlisted for destruction from our natural heritage.

The Township of Springwater has been chosen by the County of Simcoe to be slated for this dual facility because it is central to the county. The Township of Springwater is overpowered by the voting weight of more populated Townships. The more populated townships are the producers of the most garbage, yet they push and bully this facility into the pristine recreation and tourism area of the northern part of the county.

I applaud the County of Simcoe initiative to assure locally produced waste is dealt with locally. I do agree that cost to taxpayers is to be considered. The true impact of siting this facility in the forest in heart of tourist and recreational traffic has not been weighted.

The County has spent approximately one million dollars in this process to date. Industrial land is available and would not require the continued costs of developing site, service and access.

It is time to listen and acknowledge what the people of Simcoe County want. Leave our forests for our enjoyment and future generations to know the peace and health of nature. Change the Council philosophy that views forest and farmland as expendable when we all know that it is a dwindling and endangered luxury that those from lands of concrete flock to in order to replenish themselves. We choose to live here and how fortunate we are.

Yours truly,

Krista and Derrick MacIsaac

1099 Fox Farm Road

Phelpston, ON, L0L 2P0



**County of Simcoe  
Solid Waste Management**  
1110 Highway 26,  
Midhurst, Ontario L0L 1X0

Main Line (705) 726-9300  
Toll Free 1-866-893-9300  
Fax (705) 726-9832  
[simcoe.ca](http://simcoe.ca)



July 22, 2016

William Wells  
11 Maltman Court  
Phelpston, Ontario  
L0L 2K0

**RE: County of Simcoe – Solid Waste Management Infrastructure Projects  
2976 Horseshoe Valley Road West, Springwater**

Dear Mr. Wells:

We wish to acknowledge receipt of your correspondence (sent via e-mail to Warden Gerry Marshall on July 12, 2016) in regard to two County of Simcoe Solid Waste Management infrastructure projects – an Organics Processing Facility (OPF) and Materials Management Facility (MMF) – currently proposed for development at 2976 Horseshoe Valley Road West, Springwater. As a landowner in this area, we understand that you have questions regarding development of these facilities. The Warden has forwarded your correspondence to staff to provide a response, noting that your letter will be included in a forthcoming staff report providing a summary of correspondence recently received on the projects.

The County of Simcoe is committed to being environmental leaders and supporting infrastructure projects such as these that reflect our commitment to diversion, reducing garbage, and securely managing our own transfer and processing capacity. During project development, we have taken numerous steps to share information with the public and allay apprehension of near-neighbours, with an understanding of the sensitivities of siting waste management facilities. To provide some context, an Environmental Assessment (EA) is not required for either the OPF or the MMF, but the County has chosen to apply this methodology and go beyond what would be required to site this important infrastructure – infrastructure that will enable us to effectively and responsibly deliver services to all County residents.

The siting process was developed by Ontario industry-leading experts and included the evaluation of 502 potential sites through a three-screen process, applying over twenty environmental (such as the avoidance of wetlands and floodplains, vulnerable areas under Source Protection, prime agricultural areas, and sensitive receptors) and technical criteria. County landfill properties and willing vendor industrial zoned sites were included in the scope of properties reviewed in the site selection process. A short list of seven sites was presented for public, Aboriginal, and stakeholder consultation in fall 2015, followed by a detailed comparative evaluation completed by the County's consultant. Following this exhaustive siting and consultation period, furthering development of a co-located OPF and MMF at 2976 Horseshoe Valley Road West, Springwater, was approved by County Council. This location has many noted advantages, including favourable environmental conditions.

In regard to your comment on siting this facility at existing County landfills, 53 properties associated with County open and closed landfills were evaluated. Using the first set of evaluation criteria, 32 did not meet the minimum size requirements, 15 were not carried forward since they were in sensitive groundwater areas, 2 were excluded for wetlands, and one for prime agricultural land with access issues. The 3 remaining sites were further evaluated by the County's consultant, with only one waste management property being carried forward to the short list as a potential site. It should be noted that no landfilling has occurred at this property and it offered no advantage in regard to brownfield redevelopment.

Numerous studies are now being undertaken to confirm site conditions, provide justification for development of the OPF and MMF at 2976 Horseshoe Valley Road West, Springwater, and to ensure compliance with municipal and provincial legislation. Of note, an Environmental Impact Study (EIS) will outline natural features of the property (including soils, vegetation, wildlife, topography, watercourses/bodies) and the ecological functions they provide. An Agricultural Potential Assessment is also being undertaken.

Please note that on-going consultation, seen as imperative to the success of this project, will continue throughout project development. The next opportunity for consultation will be in September with discussion on the procurement of organics processing technology. Also, as has been offered from the outset of this project, staff are available to meet individually with landowners to discuss more specific concerns and questions you may have. I have enclosed business cards for myself and Stephanie Mack, Special Projects Supervisor, with all contact information.

Regards,



Rob McCullough  
Director, Solid Waste Management

cc. Gerry Marshall, Warden, County of Simcoe  
Terry Dowdall, Deputy Warden, County of Simcoe  
Bill French, County Councillor  
Don Allen, County Councillor  
Mark Aitken, CAO, County of Simcoe  
Debbie Korolnek, General Manager, Engineering, Planning & Environment, County of Simcoe

**From:** Bill Wells [<mailto:> ]

**Sent:** Tuesday, July 12, 2016 6:10 PM

**To:** Warden; Daly, John

**Cc:** Dowdall, Terry; Allen, Don; Bifulchi, Nina; Burkett, Mike; Burton, Barry; Clarke, Basil; Cooper, Sandra; Cornell, George; Cox, Judith; Dollin, Lynn; Dubeau, Anita; French, Bill; [raph.hough@simcoe.ca](mailto:raph.hough@simcoe.ca); Hughes, Harry; Keffer, Rob; Leduc, James; Little, Doug; Macdonald, Sandie C.; McKay, Gord A.; Milne, Rick; O'Donnell, John; Ross, Mike; Saunderson, Brian; Small Brett, Mary; Smith, Brian F.; Smith, Jamie; Vanderkruys, Chris; Walma, Steffen; Warnock, Scott; Wauchope, Gord

**Subject:** Proposed waste management infrastructure project 2976 Horseshoe Valley Road West

Dear Warden Marshall:

I am writing to express my opposition to the County's intention to build a waste management facility on the site referenced above, which is currently part of the Simcoe County forest system. Simcoe is rightly very proud of the forest land within our borders, and has always been a leader in the important work of protecting natural forest spaces for everyone's benefit.

Now you are proposing to destroy a large parcel of forest for a waste management facility that should more reasonably be located on some of the ample industrial land that already exists, or at one of the existing landfill sites that already has infrastructure in place.

Please consider the following:

- 1) I am opposed to the creation of any facility within the referenced site, which is forest, located within an agricultural area and a major tourist corridor.
- 2) I am opposed to the creation or any such facility within any of our dwindling supply of farms or forests.
- 3) The County's estimated (and unproven) savings in transfer costs are \$13 million over 20 years, which works out to \$1.91 per County resident per year. For the sake of an unproven savings of \$1.91 per year, I am not willing to sacrifice any of our forests.
- 4) I am opposed to Springwater Township becoming the central waste management facility for the entire County, potentially Barrie and Orillia as well, and potentially for the rest of south/central Ontario. The attraction of Springwater township rests in its farms, forests and outdoor recreational opportunities, not in garbage processing.
- 5) The proposed facility belongs on an existing industrially zoned site of which there are many in our County.
- 6) As an alternative, the proposed facility could be placed on one of our landfill sites, which are slated for closure within the next few years. Those sites have no other long term usefulness and the same environmental technology suggested for a forest site would work equally well on a landfill site.
- 7) I am disappointed to see another plan devolve into a needlessly contentious issue, similar to the County's previous plan (since abandoned) to convert farmland into a landfill – Site 41.

I ask that your response address each of the points raised above

Yours Truly

William Wells

A Simcoe County Resident





**County of Simcoe  
Solid Waste Management**  
1110 Highway 26,  
Midhurst, Ontario L0L 1X0

Main Line (705) 726-9300  
Toll Free 1-866-893-9300  
Fax (705) 726-9832  
[simcoe.ca](http://simcoe.ca)



August 9, 2016

Laurie Thompson and John Wilson  
Chelsea Chocolates  
3471 Penetanguishene Road  
Oro-Medonte, Ontario  
L4M 4Y8

**RE: County of Simcoe – Solid Waste Management Infrastructure Projects  
2976 Horseshoe Valley Road West, Springwater**

Dear Ms. Thompson and Mr. Wilson:

We wish to acknowledge receipt of your correspondence (sent via e-mail to Warden Gerry Marshall on July 27, 2016) in regard to two County of Simcoe Solid Waste Management infrastructure projects – an Organics Processing Facility (OPF) and Materials Management Facility (MMF) – currently proposed for development at 2976 Horseshoe Valley Road West, Springwater. The Warden has forwarded your correspondence to staff to provide a response. Please note that your letter will be included in a forthcoming staff report providing a summary of correspondence recently received on the projects.

The County of Simcoe is committed to being environmental leaders and supporting infrastructure projects such as these that reflect our commitment to diversion, reducing garbage, and securely managing our own transfer and processing capacity. During project development, we have taken numerous steps to share information with the public and allay apprehension of near-neighbours, with an understanding of the sensitivities of siting waste management facilities. To provide some context, an Environmental Assessment (EA) is not required for either the OPF or the MMF, but the County has chosen to apply this methodology and go beyond what would be required to site this important infrastructure – infrastructure that will enable us to effectively and responsibly deliver services to all County residents.

The siting process was developed by Ontario industry-leading experts and included the evaluation of 502 potential sites through a three-screen process, applying over twenty environmental (such as the avoidance of wetlands and floodplains, vulnerable areas under Source Protection, prime agricultural areas, and sensitive receptors) and technical criteria. County landfill properties and willing vendor industrial zoned sites were included in the scope of properties reviewed in the site selection process. A short list of seven sites was presented for public, Aboriginal, and stakeholder consultation in fall 2015, followed by a detailed comparative evaluation completed by the County's consultant. Following this exhaustive siting and consultation period, furthering development of a co-located OPF and MMF at 2976 Horseshoe Valley Road West, Springwater, was approved by County Council. This location has many noted advantages, including favourable environmental conditions.



In your letter you stated concerns related to natural heritage features and traffic. Please note that studies are currently being undertaken by an experienced team of engineers and Planners in consultation with the local municipality, the conservation authority, and provincial agencies. The purpose of these studies will be to confirm site conditions, provide justification for development of the OPF and MMF at 2976 Horseshoe Valley Road West, Springwater, and to ensure compliance with municipal and provincial legislation. Of note, the forthcoming Traffic Impact Study will address comments such as those included in your correspondence regarding traffic along this portion of Horseshoe Valley Road West (County Road 22). The results of these studies will be presented to County Council and publicly available for review.

Please note that on-going consultation, seen as imperative to the success of this project, will continue throughout project development. The next opportunity for consultation will be in September with discussion on the procurement of organics processing technology. Also, as has been offered from the outset of this project, staff are available to meet individually with landowners to discuss more specific concerns and questions you may have. I have enclosed business cards for myself and Stephanie Mack, Special Projects Supervisor, with all contact information.

Regards,



Rob McCullough  
Director, Solid Waste Management

cc.      Gerry Marshall, Warden, County of Simcoe  
         Terry Dowdall, Deputy Warden, County of Simcoe  
         Bill French, County Councillor  
         Don Allen, County Councillor  
         Mark Aitken, CAO, County of Simcoe  
         Debbie Korolnek, General Manager, Engineering, Planning & Environment, County of Simcoe

**From:** Chelsea Chocolates [mailto: ]  
**Sent:** Wednesday, July 27, 2016 1:36 PM  
**To:** Warden <Warden@simcoe.ca>  
**Subject:** Materials Handling 7 organic Processing Facilities

I am writing to you with concern for the 'Materials Handling & Organic Processing Plant' proposed for the Simcoe County Forest on Horseshoe Valley Road, Springwater Township.

We have a small business in Craighurst, so we are very familiar with these lands of discussion. We are not in favour of destroying our forests and wildlife – many of us enjoy the trails with our own families and pets.

The traffic on Horseshoe Valley Road is already high with year round volume. This area is a recreational playground for residents, vacationers, resort tourists, timeshare participants and sports enthusiasts. Not a place for our waste system.

Please consider our concerns.

Laurie Thompson/John Wilson  
CHELSEA CHOCOLATES  
3471 Penetanguishene Rd  
Barrie, Ontario L4M 4Y8  
705-725-9210 | phone



[www.chelseachocolates.com](http://www.chelseachocolates.com)



netGUARD has detected a possible fraud attempt from "www.shoporomedonte.com" claiming to be

[ShopOroMedonte.com Profile](#)



[Find us on Facebook](#)



**County of Simcoe**  
**Office of the Warden**  
1110 Highway 26,  
Midhurst, Ontario L9X 1N6

Main Line (705) 726-9300  
Toll Free (866) 893-9300  
Fax (705) 725-1285  
**simcoe.ca**

August 26, 2016

Ms. Anne Learn Sharpe  
AWARE Essa  
58 Michael Street  
Angus, ON L0M 1B5

Dear Ms. Learn Sharpe:

**RE: County of Simcoe – Solid Waste Management Infrastructure Projects  
2976 Horseshoe Valley Road West, Springwater**

I wish to acknowledge receipt of your correspondence (sent via e-mail on August 8, 2016) in regard to two County of Simcoe Solid Waste Management infrastructure projects – an Organics Processing Facility (OPF) and Materials Management Facility (MMF) – currently proposed for development at 2976 Horseshoe Valley Road West, Springwater. We appreciate your interest in these important projects and wish to address several of your statements. Please note that this response has been prepared with the assistance of County staff as it contains some specific technical content.

We thank AWARE Essa for its noted support of our plan to develop this infrastructure, despite the differences we have on the preferred location. Feedback from across the region very much supports the need to manage our own waste here in the County and look to the future as we adapt to changes in provincial legislation and increase our diversion. The message time and time again from our residents has been ‘no more landfills’. We are doing our best to heed that and these environmentally-responsible initiatives are aligned with that message.

No matter the numerous benefits of these facilities, siting is no doubt a challenging undertaking. We understand that, and the siting process was not taken lightly. Our consultants, GHD Limited, undertook a process consistent with an Environment Assessment. They evaluated 502 potential sites through three screens, applying criteria such as the avoidance of wetlands and floodplains, vulnerable areas under Source Protection, Prime Agricultural Areas, and sensitive receptors to make their recommendation to County Council. Many industrial sites, including all County existing and closed landfill sites, were included in the evaluation; however, these locations did not meet critical requirements including size, location, avoidance of Prime Agricultural Areas, groundwater conditions, and location to neighbours. Extensive consultation with the public, Aboriginal communities, and various agencies was undertaken as part of this process.

In your letter, you stated that given the short list of sites, it appears that “the services provided by forests are highly underrated in the comparison criteria”. To clarify, criteria was not weighted or applied value. No single criteria, including the capital cost of property acquisition, influenced the rankings more than another. Each short-listed site was evaluated thoroughly and the net effects of constructing the facilities at each location determined. The short-listed sites were then compared against each other, with the preferred site offering the most advantages.

Be assured that development is being furthered in consultation with the local municipality, conservation authority, and provincial agencies. Numerous studies are being undertaken to confirm site conditions, and to ensure compliance with municipal and provincial legislation. Of note, an Environmental Impact Study (EIS) will outline natural features of the property (including soils, vegetation, wildlife, topography, watercourses/bodies) and the ecological functions they provide and will address your concerns about the potential impact on habitat. An Agricultural Impact Assessment will address your noted concern regarding development of this facility in an agricultural area.

Regarding your comments about the “limited lifespan (of the facility) as technology in waste processing improves”, this facility will be flexible to adapt to changes in our waste stream. This was considered in the siting evaluation. Having the ability to transfer garbage will be an indefinite requirement once County landfills close. We are acting now to prepare for future needs.

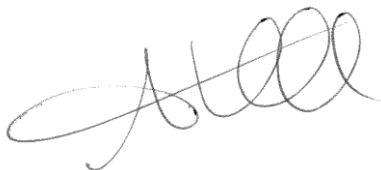
We certainly appreciate your recognition of our strong forestry stewardship. Our forest is the largest municipally-owned forest in Ontario and one of the largest in Canada. We own over 32,600 acres of protected forest lands across 150 different properties – and we continue to invest in expanding the forest by acquiring new land. To be clear, the proposed facility would only span across 11 acres of the 207 acre Freele Tract. The rest of the Freele Tract – approximately 95% – will remain. To put this into perspective, this infrastructure will utilize only 11 acres of 32,600 total acres that makes up the Simcoe County Forest.

Regarding your comments on tree planting and the period of time it takes for trees to reach maturity, it should be noted that sections of the Freele Tract, a working forest, were scheduled to be harvested through our forestry program well before siting was finalized. As stated in other materials, we have planted more than 20 million over the years and invest approximately \$35,000 annually into local tree planting initiatives. Tree planting will be considered, among other actions, as compensation as we move forward.

This infrastructure will benefit all our residents for years to come. We will continue to consult with nearby neighbours and businesses to listen to their concerns and feedback. We both agree that managing our own waste here in Simcoe County clearly has many environmental and economic benefits. As an added benefit, end products, such as compost and fertilizer can be used for local agricultural initiatives and support businesses and farmers across the region.

I hope that the above information is helpful and provides some clarity. We look forward to moving ahead with these projects and building on our many successful forestry and waste management programs.

Sincerely,

A handwritten signature in black ink, appearing to read 'Gerry Marshall', with a stylized, cursive script.

Gerry Marshall  
Warden, County of Simcoe  
Mayor, Town of Penetanguishene

**From:** Sharpe [mailto: ]  
**Sent:** Monday, August 08, 2016 5:20 PM  
**To:** Warden <Warden@simcoe.ca>  
**Cc:** Dowdall, Terry <Terry.Dowdall@simcoe.ca>; Allen, Don <Don.Allen@simcoe.ca>; Bifulchi, Nina <Nina.Bifulchi@simcoe.ca>; Burkett, Mike <Mike.Burkett@simcoe.ca>; Burton, Barry <Barry.Burton@simcoe.ca>; Clarke, Basil <Basil.Clarke@simcoe.ca>; Cooper, Sandra <Sandra.Cooper@simcoe.ca>; Cornell, George <George.Cornell@simcoe.ca>; Cox, Judith <Judith.Cox@simcoe.ca>; Dollin, Lynn <Lynn.Dollin@simcoe.ca>; Dubeau, Anita <Anita.Dubeau@simcoe.ca>; French, Bill <Bill.French@simcoe.ca>; Hough, Ralph <Ralph.Hough@simcoe.ca>; Harry, Harry <harry.huges@simcoe.ca>; Keffer, Rob <rob.keffer@simcoe.ca>; Leduc, James <James.Leduc@simcoe.ca>; Little, Doug <Doug.Little@simcoe.ca>; Macdonald, Sandie C. <Sandie.Macdonald@simcoe.ca>; McKay, Gord A. <Gord.McKay@simcoe.ca>; Milne, Rick <Rick.Milne@simcoe.ca>; O'Donnell, John <John.ODonnell@simcoe.ca>; Rawson, Bill <Bill.Rawson@simcoe.ca>; Ross, Mike <Mike.Ross@simcoe.ca>; Saunderson, Brian <Brian.Saunderson@simcoe.ca>; Small Brett, Mary <Mary.SmallBrett@simcoe.ca>; Smith, Brian F. <BrianF.Smith@simcoe.ca>; Smith, Jamie <Jamie.Smith@simcoe.ca>; Vanderkruys, Chris <Chris.Vanderkruys@simcoe.ca>; Walma, Steffen <Steffen.Walma@simcoe.ca>; Warnock, Scott <Scott.Warnock@simcoe.ca>; Wauchope, Gord <Gord.Wauchope@simcoe.ca>  
**Subject:** Proposed Waste Management Infrastructure Project



County of Simcoe  
Midhurst, Ontario  
L0L 1X0  
August 8, 2016

To Warden Marshall, Deputy Warden Dowdall and Members of Simcoe County Council,  
Re: Proposed Waste Management Infrastructure Project  
2976 Horseshoe Valley Road West

AWARE Essa supports Simcoe County Council's plan to build Organics Processing and Materials Management facilities here in the county. Processing organic waste locally has far-reaching economic and environmental benefits. Unfortunately the decision to locate the facilities within one of Simcoe County's forests is completely counterproductive.

GHD consultants used an evaluation process based on site comparisons. Five of the seven potential sites on the short list are forest tracts, which leads us to believe that the services provided by forests are highly underrated in the comparison criteria. The value of a forest tract such as Freele increases as climate change advances. The forest provides: wildlife habitat and corridors for the movement of wildlife; mitigation of flooding, erosion, drought, extreme weather events; filtration of water and air; carbon capture and storage. Dollar values can be assigned to the green infrastructure benefits of forests, and these should have been calculated and added to the costs of using a forested site.

Not only the area occupied by the facility will be impacted, but also the area of forest interior will be greatly reduced as dry, windy conditions, predators and invasive species penetrate the forest. The OPF and MMF will have a limited lifespan as technology in waste processing improves. But the damage done to the forest ecosystem will be permanent.

The site chosen is in an agricultural area, and increased noise, dust, traffic will impair productivity. Nicholyn Farms, a sustainable farm business and winner of several Simcoe County Food and Agriculture Charter Awards, is located next to the site and will be particularly vulnerable.

As taxpayers we appreciate the county's concern for costs. But we believe the long-term losses that come with this site have not been considered and outweigh any short-term savings in property costs. Tree planting is always beneficial, but it would be inadequate compensation when it takes decades for the trees that survive to reach maturity.

Simcoe County has a proud history of forestry. In the last century, foresters and politicians working together planted the trees that have become Simcoe County forests and began a conservation movement that reversed the desertification of parts of Ontario. The threat of the present century is climate change and its effects are global. This is no time to become complacent about the value of our hard-won forests.

We ask that Simcoe County Council reconsider the choice of site for the OPF and MMF and exclude Simcoe County forests as potential locations for any industrial activity on a permanent basis. As county residents we would like to be able to celebrate unequivocally the long-term environmental benefits of this waste management project.

Respectfully yours,  
Anne Learn Sharpe on behalf of AWARE Essa  
58 Michael Street  
Angus ON