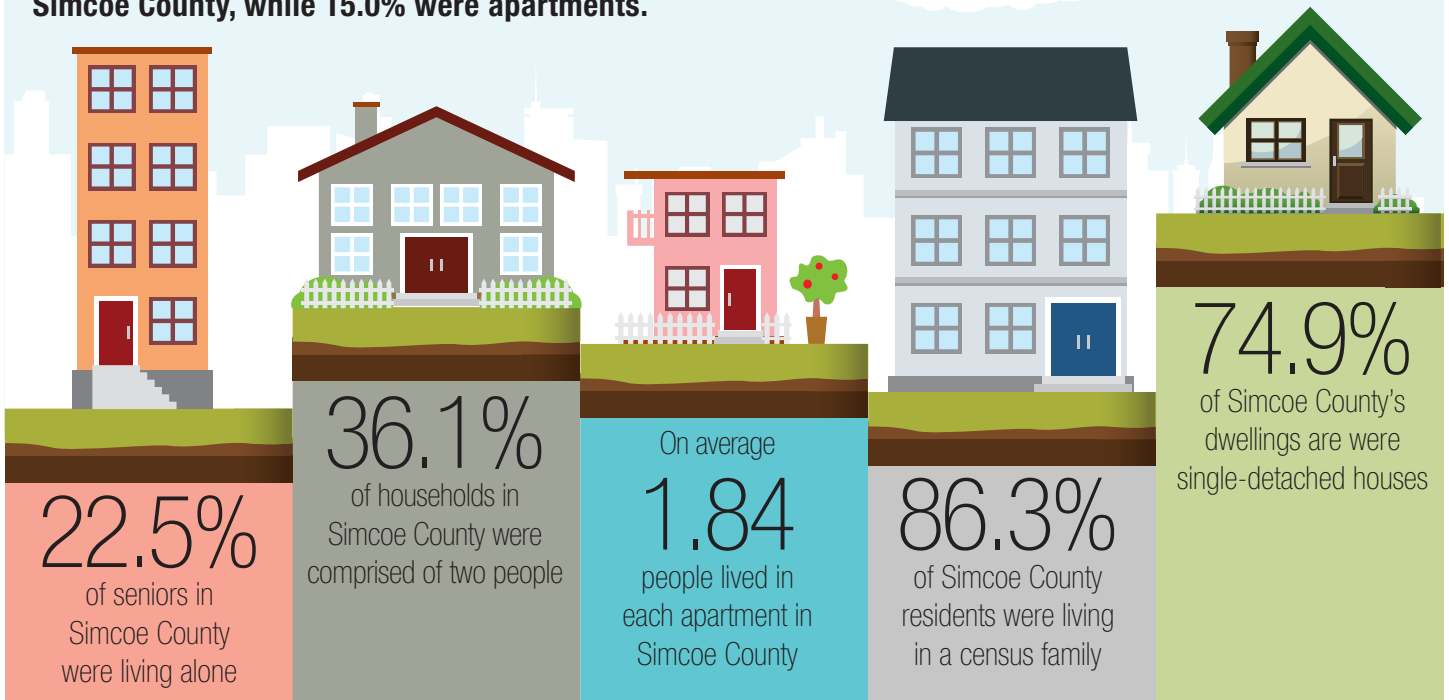


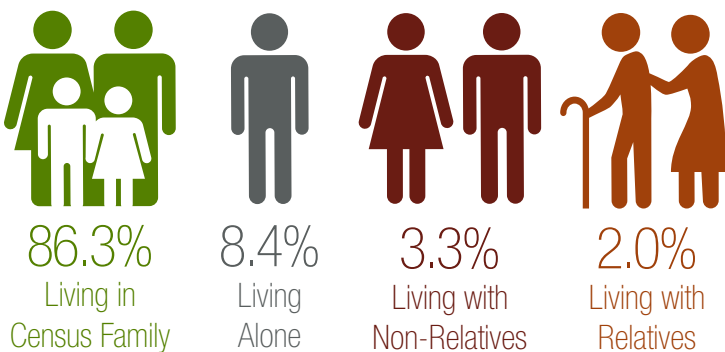
# 2011 Census Bulletin

## Households and Dwelling Types

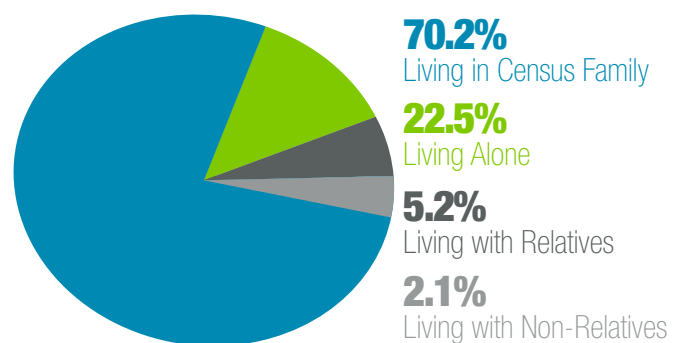
This bulletin summarizes data from the 2011 Census for information regarding households and dwelling types in Simcoe County. The Census reflects a diverse community within the region, with different skills, cultural influences, and geographic areas. In 2011, the majority of residents in Simcoe County (86.3%) lived in a census family, which includes married couples or common law couples with or without children and single parents. Single-detached homes represented 74.9% of dwellings in Simcoe County, while 15.0% were apartments.



### Living Arrangements in Simcoe County



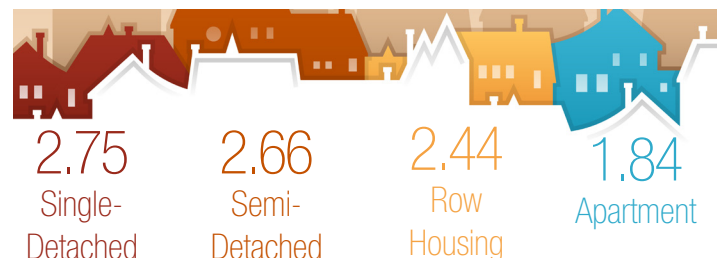
### Living Arrangements for Seniors



### Housing Structures By Dwelling Type



### Average Persons Per Dwelling Type



## Summary of Facts

In 2011, out of 169,460 private households in Simcoe County, 74.9% were single-detached houses, 15.0% were apartments, 5.9% row housing, 3.4% semi-detached houses, and 0.8% other. On average there were 2.75 persons per detached house, 2.66 per semi-detached house, 2.44 per row housing dwellings, and 1.84 persons per apartment.

The majority (86.3%) of individuals in private households were classified as living in a census family. Individuals in private households living alone represented 8.4%, living with relatives represented 2.0%, and living with non-relatives represented 3.3%. For seniors aged 65 or over in private households, 70.2% were living in a census family, 22.5% were living alone, 5.2% were living with relatives, and 2.1% were living with non-relatives. Regarding household size, 36.1% of households in Simcoe County were comprised of two persons, 21.8% of households were comprised of one person, 16.6% three persons, 16.5% four persons, 6.3% five persons, and 2.7% of households were comprised of six or more persons.

| Persons Over the Age of 65 by Living Arrangement |                      |                         |
|--|----------------------|-------------------------|
| Living Arrangement                               | # of Persons over 65 | % of Population over 65 |
| Living in Census Family                          | 45,620               | 70.2%                   |
| Living Alone                                     | 14,640               | 22.5%                   |
| Living with Relatives                            | 3,355                | 5.2%                    |
| Living with Non-Relatives Only                   | 1,340                | 2.1%                    |
| <b>Total</b>                                     | <b>64,960</b>        | <b>100%</b>             |

| Average Number of People Living in Each Structure Type |                                     |                          |
|--|-------------------------------------|--------------------------|
| Structure Type   | # of People Living in Dwelling Type | # of People Per Dwelling |
| Single-Detached House                                  | 349,390                             | 2.75                     |
| Semi-Detached House                                    | 15,455                              | 2.66                     |
| Row House  | 24,555                              | 2.44                     |
| Apartment Building                                     | 46,595                              | 1.84                     |
| <b>Total</b>   | <b>435,995</b>                      | <b>2.59</b>              |

| Percent of Dwellings by Structure Type |                |                |
|--|----------------|----------------|
| Structural Type                        | # of Dwellings | % of Dwellings |
| Single-Detached House                  | 126,965        | 74.9%          |
| Apartment Building                     | 25,360         | 15.0%          |
| Row House                              | 10,055         | 5.9%           |
| Semi-Detached House                    | 5,810          | 3.4%           |
| Other                                  | 1,275          | 0.8%           |
| <b>Total</b>                           | <b>169,460</b> | <b>100.0%</b>  |

| Total Number of Private Households by Household Size |                         |                         |
|--|-------------------------|-------------------------|
|  | # of Private Households | % of Private Households |
| 1 person   | 36,970                  | 21.8%                   |
| 2 persons  | 61,170                  | 36.1%                   |
| 3 persons  | 28,200                  | 16.6%                   |
| 4 persons  | 27,880                  | 16.5%                   |
| 5 persons  | 10,635                  | 6.3%                    |
| 6 or more  | 4,615                   | 2.7%                    |
| <b>Total</b>   | <b>169,465</b>          | <b>100.0%</b>           |

| Living Arrangements       |                |                 |
|---------------------------|----------------|-----------------|
| Living Arrangement        | # of Persons   | % of Population |
| Living in Census Family   | 378,240        | 86.3%           |
| Living Alone              | 36,970         | 8.4%            |
| Living with Non-Relatives | 14,485         | 3.3%            |
| Living with Relatives     | 8,595          | 2.0%            |
| <b>Total</b>              | <b>438,285</b> | <b>100.0%</b>   |

\* A census family refers to a married couple with or without children, common law couples with or without children, and single parents. Couples can be either same sex or opposite sex couples and children can be adopted or hereditary.

- Figures may not add up due to rounding

Source: Statistics Canada, 2011 Census of Population